

Project No : Production Motor
Curve No : HC683LG-63738

Winding : 0.85 - 21

Date : 04/27/1999
Model :

Full Scales : 100.00 Amp
200.00 Watts

Motor tested rapidly to prevent significant temperature rise.

At a constant voltage of 7.20 Volts
with a circuit resistance 0.000 Ohm

(At the ambient temperature of 25-30 deg C)

At No Load

Speed : 14605 Rpm
Current : 1.420 Amp

At Stall (Extrapolated)

Torque : 314.01 m-Nm
Current : 70.75 Amp

At Maximum Efficiency

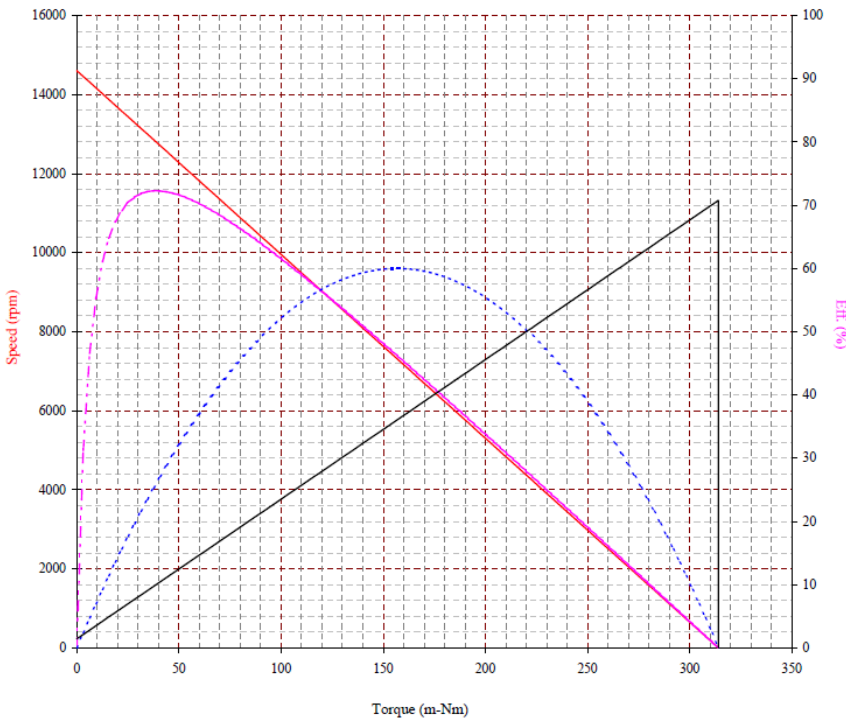
Efficiency : 72.27 %
Torque : 37.68 m-Nm
Speed : 12852 Rpm
Current : 9.74 Amp
Output : 50.68 Watts

At Maximum Power

Torque : 157.01 m-Nm
Speed : 7303 Rpm
Current : 36.09 Amp
Output : 119.99 Watts

Characteristics

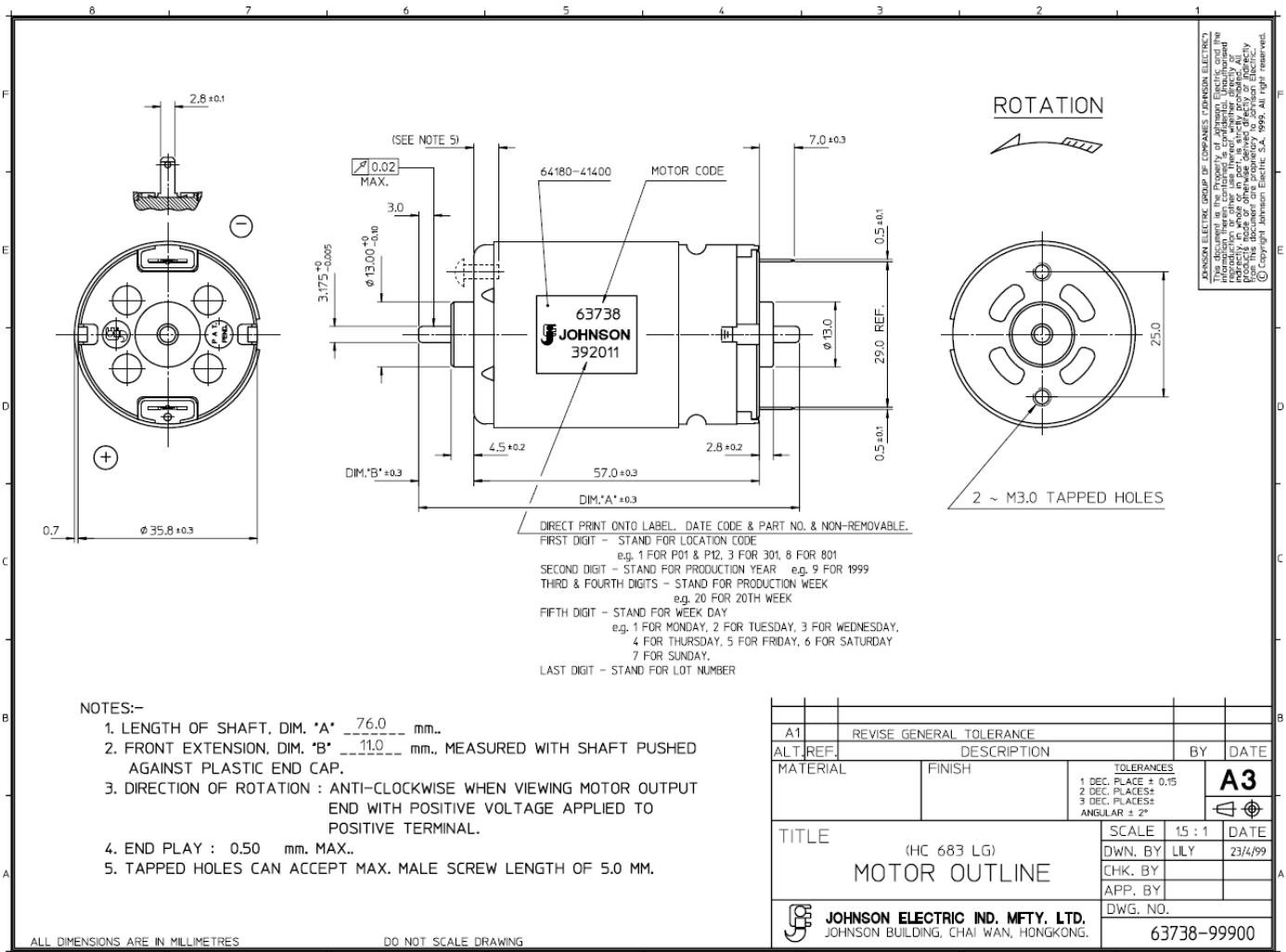
Torque Constant : 4.5290 m-Nm/Amp
Dy. Resistance : 0.1020 Ohms
Motor Regulation : 46.5110 Rpm/m-Nm



Issued by P&I/ATP Dept., File No : 63738.xls, 5/12/99

COMPUTER PRINT-OUT
NOMINAL MOTOR CURVES.
Performance and characteristics are measured based on limited motor samples only.

Reference no : 25650



JOHNSON ELECTRIC GROUP OF COMPANIES (JOHNSON ELECTRIC)
This document is the Property of Johnson Electric and is loaned to you for information only. It is not to be reproduced, stored in a retrieval system, or transmitted in any form or by any means, electronic, mechanical, photocopying, recording, or by any information storage and retrieval system. All rights reserved. © Copyright Johnson Electric, S.A. 1999. All right reserved.