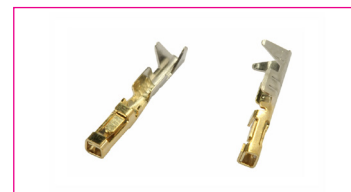


**SPECIFICATION:**

AWG (Max.):	AWG 22
AWG (Min.):	AWG 28
Operating Voltage (Max.):	250 V
Operating Current (Nom.):	3 A
Operating Temperature:	-25°C to 85°C
Cable Diameter (Max.):	1.6 mm
Contact Resistance (Max.):	20 mΩ
Dielectric Strength:	800 Vac



**MATERIAL:**

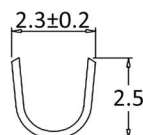
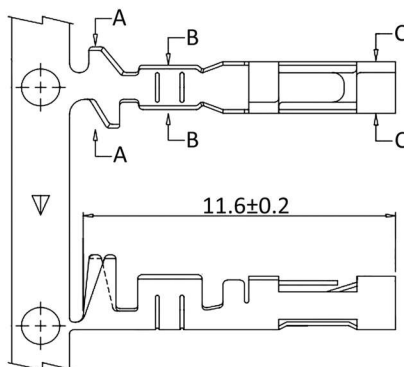
Material (Contact Area): brass, gold plated

**HANDLING:**

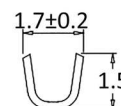
Packaging: taped

**TOLERANCE:**

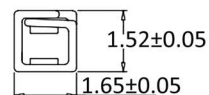
.X: ± 0.25  
.XX: ± 0.13



Section A-A



Section B-B



Section C-C

**Order Information**

Identifier:

CKA

Terminal for CG series

Packing Unit:

#

empty: 100 pcs. separately cut  
/10K: roll with 10.000 pieces