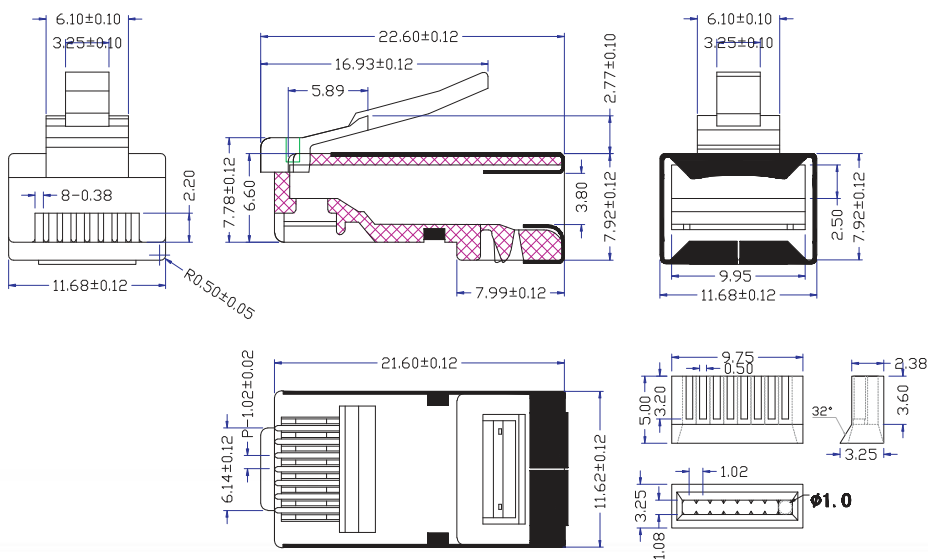
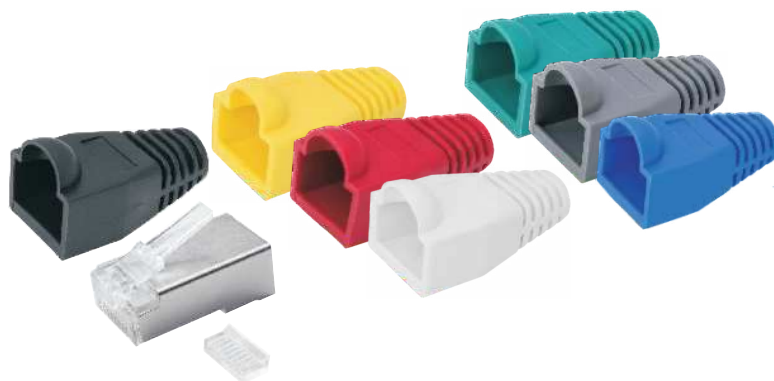


25pcs RJ-45 Modular Plug Connector Set 8P8C, CAT5E



- 1906C172 - Black
- 1906C173 - Grey
- 1906C174 - Green
- 1906C175 - Blue
- 1906C176 - Yellow
- 1906C177 - Red
- 1906C178 - White



Technical:

250 V/AC max. at 2 amp.
Dielectric with standing 500 V/AC
Insulation resistance: 500Mohm
Termination resistance: 35 Mohm

Mechanical:

Cable-to-Plug tensile strength: 20LBs (89N) min.
Durability: 500 mating cycles

