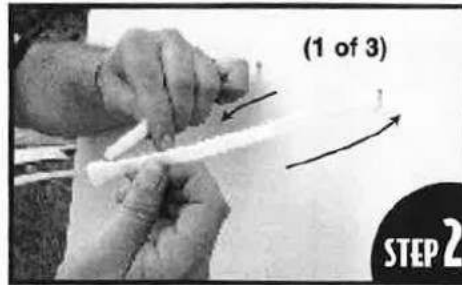
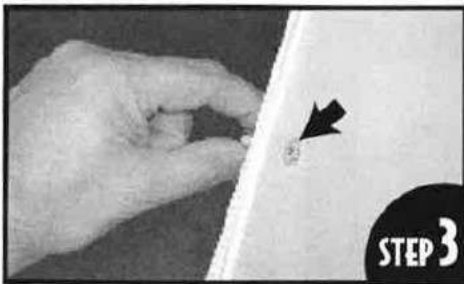


Determine the height and location for the signs and clean the surfaces of the pole prior to installation. Next apply the three adhesive pads to the back of each sign as shown. This will help hold the sign in place on the pole for the next step.



Place each sign back-to-back with the pole "sandwiched" in-between with graphics facing out. Insert straps through the holes in the center of the sign as shown above. Use 1 or 2 straps depending on the size of pole. Repeat this step for the top and bottom holes. Make sure that the straps are through both signs before tightening. Cut off excess strap with scissors after tightening.

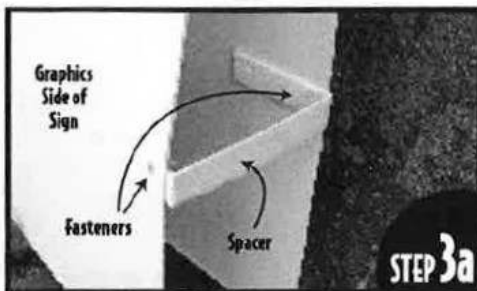


NOTE: For larger poles, see Step 3a below. Use the included fasteners through the holes on the sides of the signs to complete the installation. Make sure the fasteners pass through both signs before tightening.



Completed standard installation shown.

TOP VIEW



Larger Pole Installation

If your store has larger poles, use the included spacers (as shown) using the fasteners in the holes along the sides of the signs. Repeat this process for all four corners. This will help keep the graphics flat and legible.



Completed installation for wide poles shown.

TOP VIEW

