

cell chemistry: Li-Ion
cell size: C (26500)
cell type: round cell

Conditions

nominal output voltage: 1.5 V when SOC (state of charge) of battery is >10%
 reduced output voltage: 1.05 V when SOC (state of charge) of battery is <10%

capacity
 nominal: 2500 mAh discharge at 0.2C
 minimum: 2300 mAh discharge at 0.2C
 2100 mAh discharge at 0.5C
 ta: 20°C; EV(Discharge End Voltage): 0.9V

discharge ta: 0....45°C
 max. continuous discharge current: 2000 mA
 nom. discharge current: 500 mA

charge via type-C connector (with USB charger)

supply voltage: 5 V ± 0.25V
 charge current: 500 mA ± 10%
 charge time: 2.75 h ± 0.5h

external charge (at battery + / - poles) is not allowed; charge battery via type-C connector only

internal resistance: n/a at 1kHz, sine wave measurement according to IEC 896-2

built-in li-ion battery: 3.7 V / 1100mAh
 energy: 4.07 Wh

output protection functions protection against short circuit and overload
 overload cut off current: 2.5 A ± 0.5A

deep discharge protection
 cut-off voltage of int. battery: 2.6 V ± 0.3V

LED charge indicator visible on the opposite side of the type-C socket
 flashes red during charge
 lights green at end of charge (battery fully charged)

life time expectance
 (C>70% of min. capacity) ≥ 1200 cycles at 0.2C charge/discharge rate

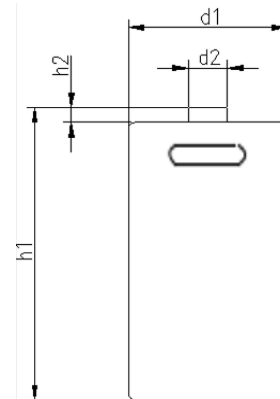
self discharge:
 ≤ 2 %/month at 20°C
 ≤ 5 %/month at 30°C
 ≤ 10 %/month at 40°C


ambient temperature range:
 0...45 °C charge
 - 20...60 °C discharge
 - 20...25 °C storage max. 1year
 - 20...45 °C storage max. 3months

recommended SOC: 30...50 % for long-time storage
 (SOC = state of charge)

mechanical specifications

cell dimensions (incl. sleeve)
 diameter d1: 25.5 - 0.5 mm
 diameter d2: 7.0 ± 0.5 mm
 height h1: 49.5 ± 1 mm
 height h2: 1.5 ± 0.5 mm
 weight: 37 ± 2 g



	ANSMANN Specifications for model: C (26500) Li-Ion Battery 1.5V 2500mAh w. type-C charge
	data sheet no. / part no. 1313-0004
	s.n. 705163
	author / date TG / 26.10.2022