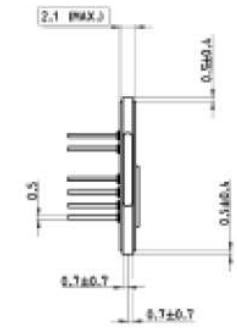
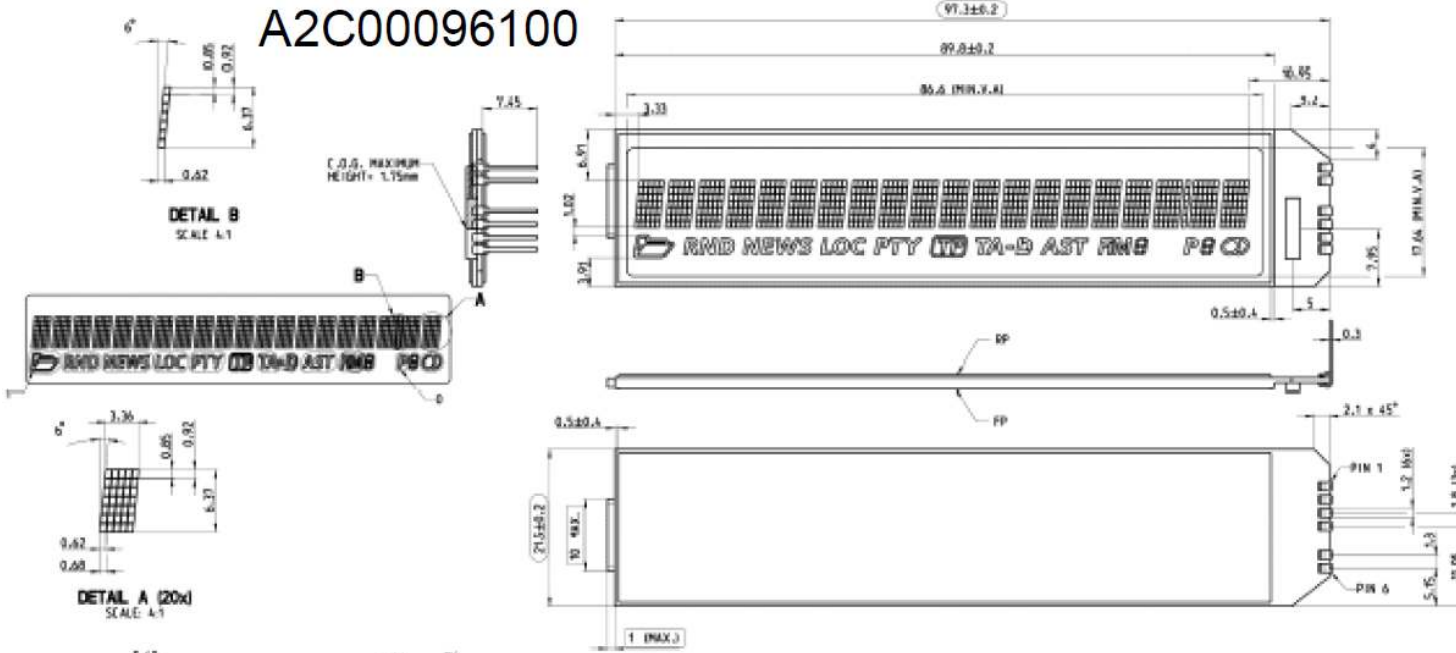
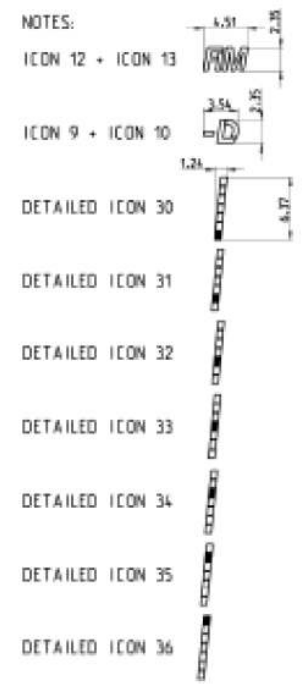
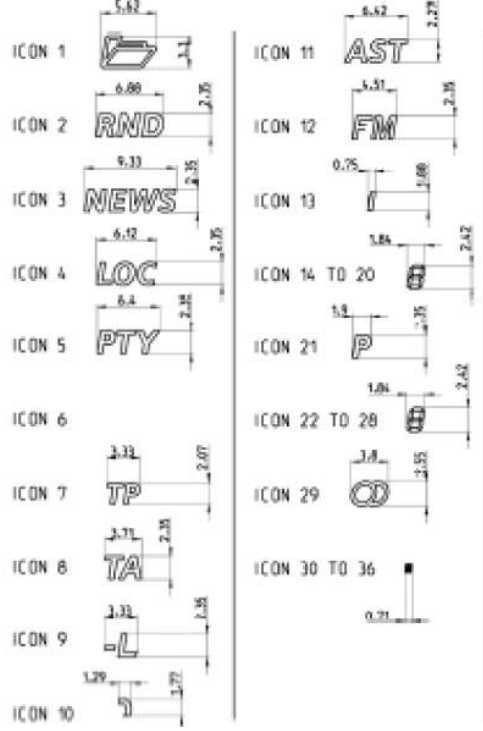


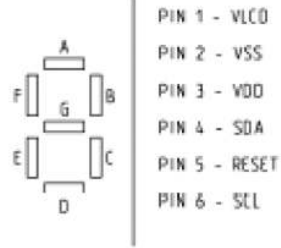
# A2C00096100



No.	1	2	3	4	5	6
SYMBOL	VLCD	VSS	VDD	SDA	POR	SCL



- A-ICONS 14 AND 22
- B-ICONS 15 AND 23
- C-ICONS 16 AND 24
- D-ICONS 17 AND 25
- E-ICONS 18 AND 26
- F-ICONS 19 AND 27
- G-ICONS 20 AND 28



- PIN 1 - VLCD
- PIN 2 - VSS
- PIN 3 - VDD
- PIN 4 - SDA
- PIN 5 - RESET
- PIN 6 - SCL

THE UPPER GLASS EDGE MAY BE CLOSER TO C.D.G.  
THERE IS NO RESTRICTION ON SW SIDE.

