



Banana Pro/ Pi 3.5 inch RGB LCD Module with TOUCH SCREEN

Product Code: 3.5 inch LCD with touch screen

Dimensions (L x W x H): 93.00 x 70.00 x 10.00 cm

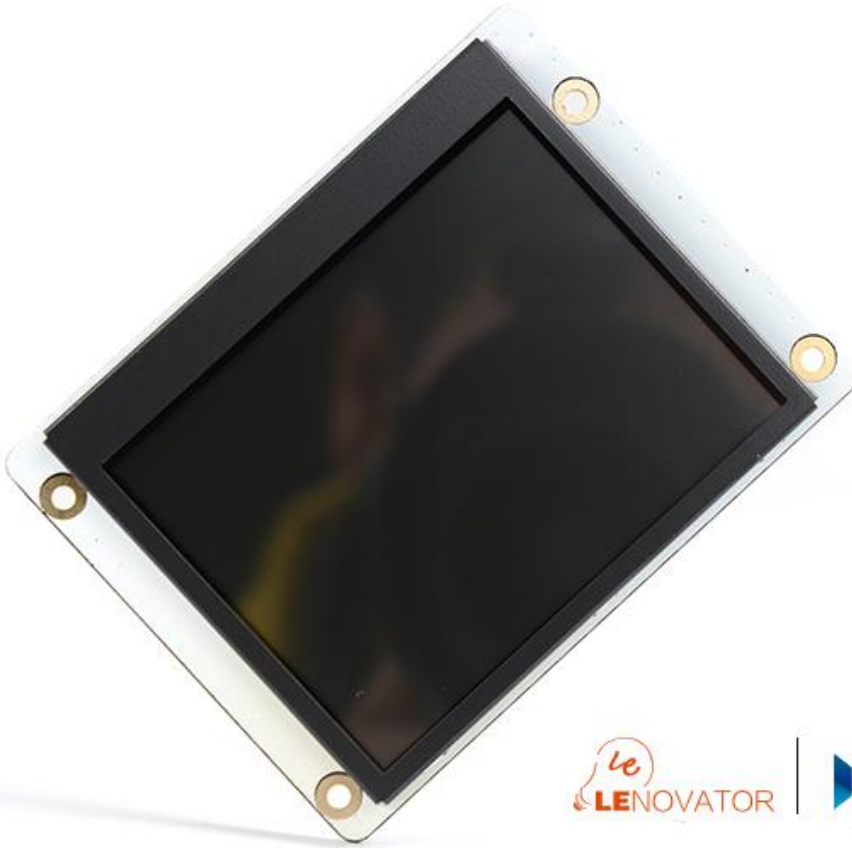
3.5 inch Touch Screen LCD Module

Products Name: Banana Pro/Pi 3.5 inch touch screen LCD module.

Products Description: The LCD module connects to the LVDS/RGB/CPU display interface tinct display effect with lightweight and portable.

Specifications:

LCD size	3.5 inch(Diagonal)
Interface	Parallel RGB
Resolution	320 x 3(RGB) x 240
LCD driver element	a-Si TFT active matrix
Dot pitch	73(W) × 219(H) um
Surface treatment	Glare
Color arrangement	RGB-stripe
View direction	6 o'clock
	9 o'clock: 50°~60°
	3 o'clock: 50°~60°
View angle (CR≥10)	12 o'clock: 40°~50°
	6 o'clock: 45°~55°
Touch screen IC	FT5316
Power	5V/250mA
Active area	70.08 (W) × 52.56(H) mm
Dimension	76.9(W) × 65.3(H) × 3.26(D) mm



 LENOVATOR

 LEMAKER



 LENOVATOR

 LEMAKER