

## SITRALON (PC) 16E-V0 / C7035

**Material:** Polycarbonate

**Highlights:** V0 by 1,5 mm

Properties	Standard	Test Conditions	Unit	Value
<b>Rheological Properties</b>				
Melt volume-flow rate	ISO 1133	300 °C / 1,2 kg	cm <sup>3</sup> /(10 min)	16
Melt mass-flow rate	ISO 1133	300 °C / 1,2 kg	g/10 min	18
<b>Mechanical Properties</b>				
Tensile modulus	ISO 527 - 1, - 2	1 mm/min	MPa	2400
Yield stress	ISO 527 - 1, - 2	50 mm/min	MPa	60
Yield strain	ISO 527 - 1, - 2	50 mm/min	%	8
Nominal tensile strain at break	ISO 527 - 1, - 2	50 mm/min	%	>50
Tensile stress at break	ISO 527 - 1, - 2	5 mm/min	MPa	50
Tensile strain at break	ISO 527 - 1, - 2	5 mm/min	%	-
Charpy impact strength	ISO 179 - 1eU	23 °C	kJ/m <sup>2</sup>	N
Charpy impact strength	ISO 179 - 1eU	-30 °C	kJ/m <sup>2</sup>	-
Charpy notched impact strength	ISO 179 - 1eA	23 °C	kJ/m <sup>2</sup>	14
<b>Thermal Properties</b>				
Vicat softening point	ISO 306	50 °C/h; 50N	°C	140
Burning Behavior	acc. to UL94	thickn. (1,5) mm	class	V0
<b>Other Properties</b>				
Density	ISO 1183	-	g/cm <sup>3</sup>	1,2
Filler content (glass fibers)	-	-	%	-
Abbreviated designation	ISO 1043	-	-	>PC<

These property values are not intended for specification purpose. They represent average values and are measured - except the melt volume rate - on injection molded samples of colourless material. All samples are tested according to ISO standards. The results of coloured material can vary. Each user of the product shall test the product in his application.

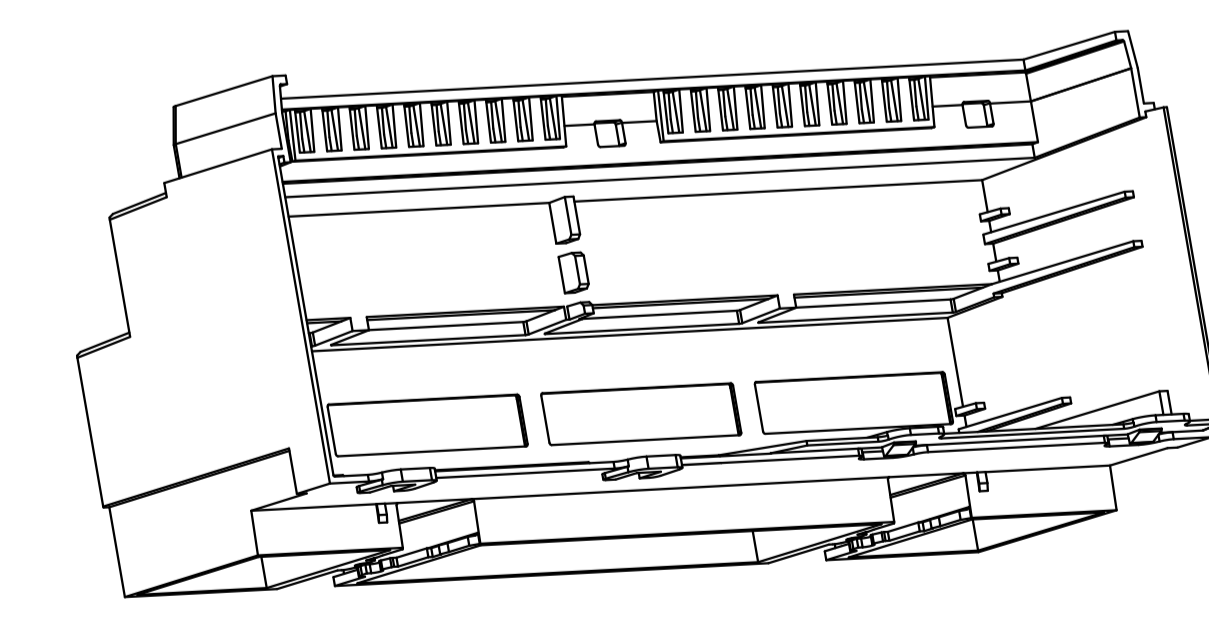
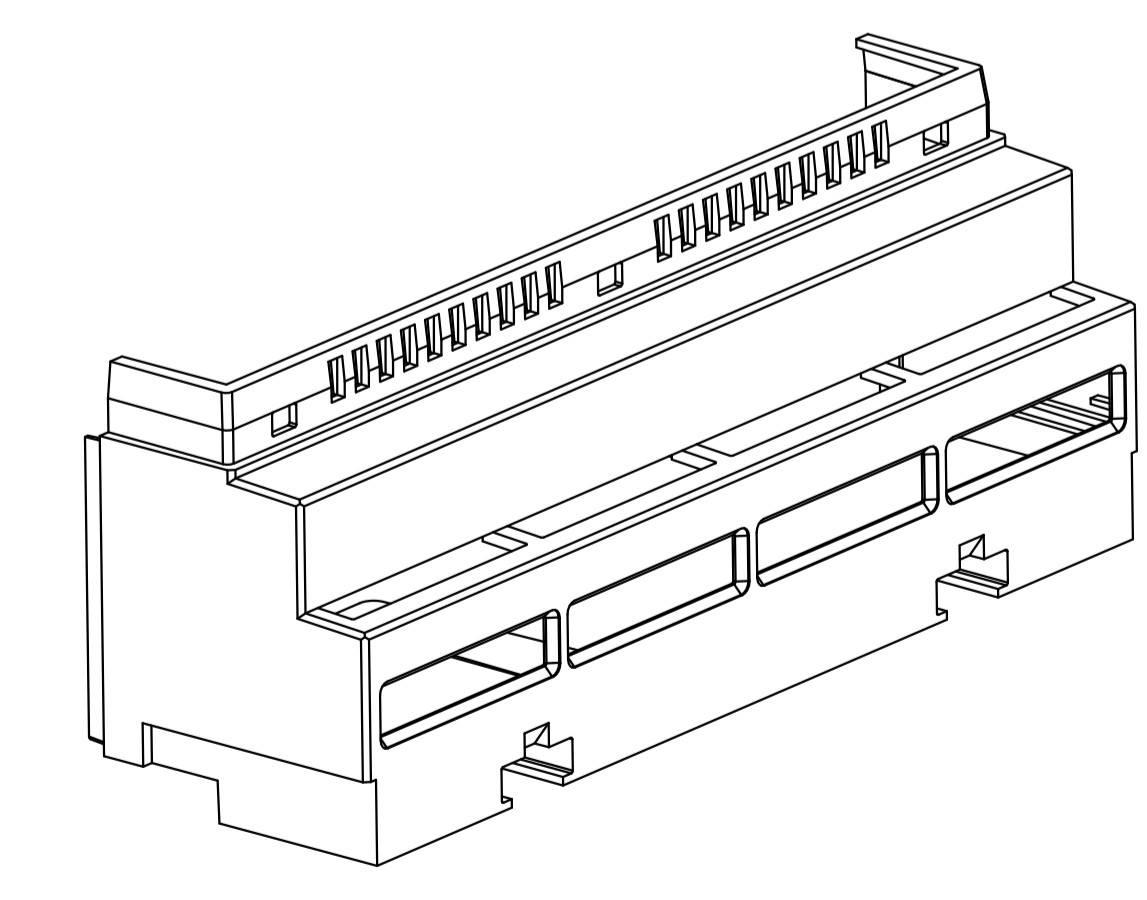
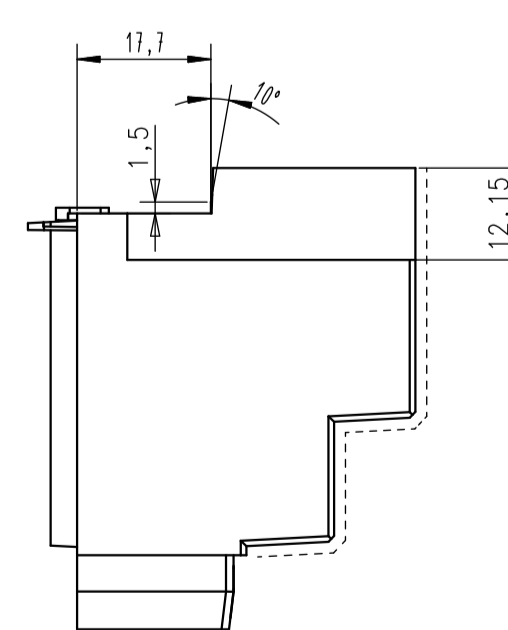
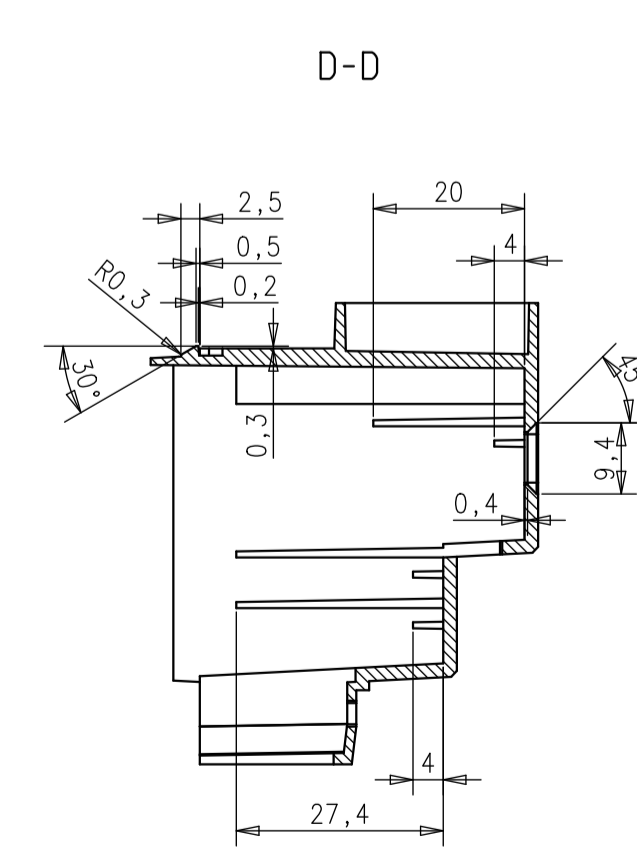
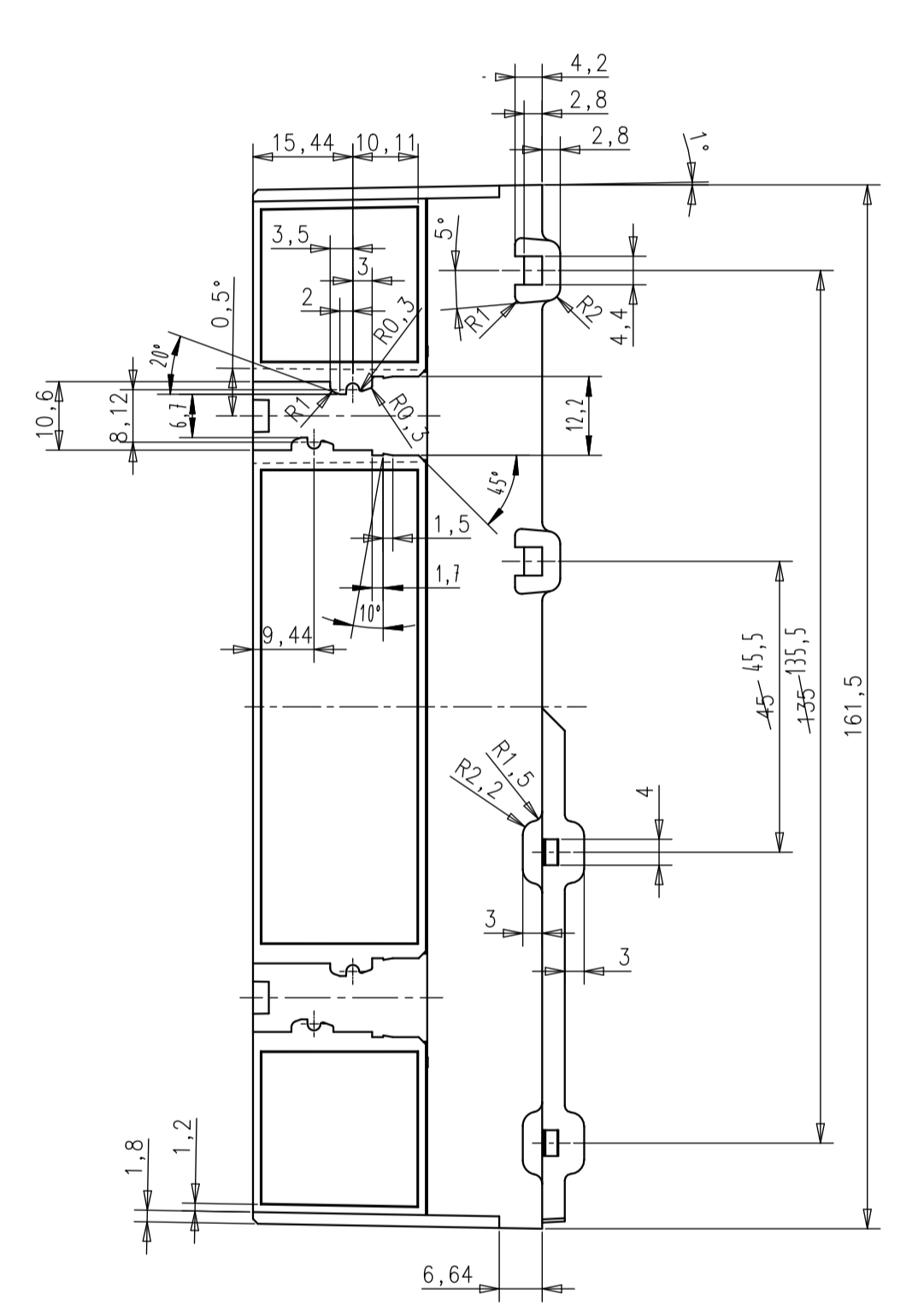
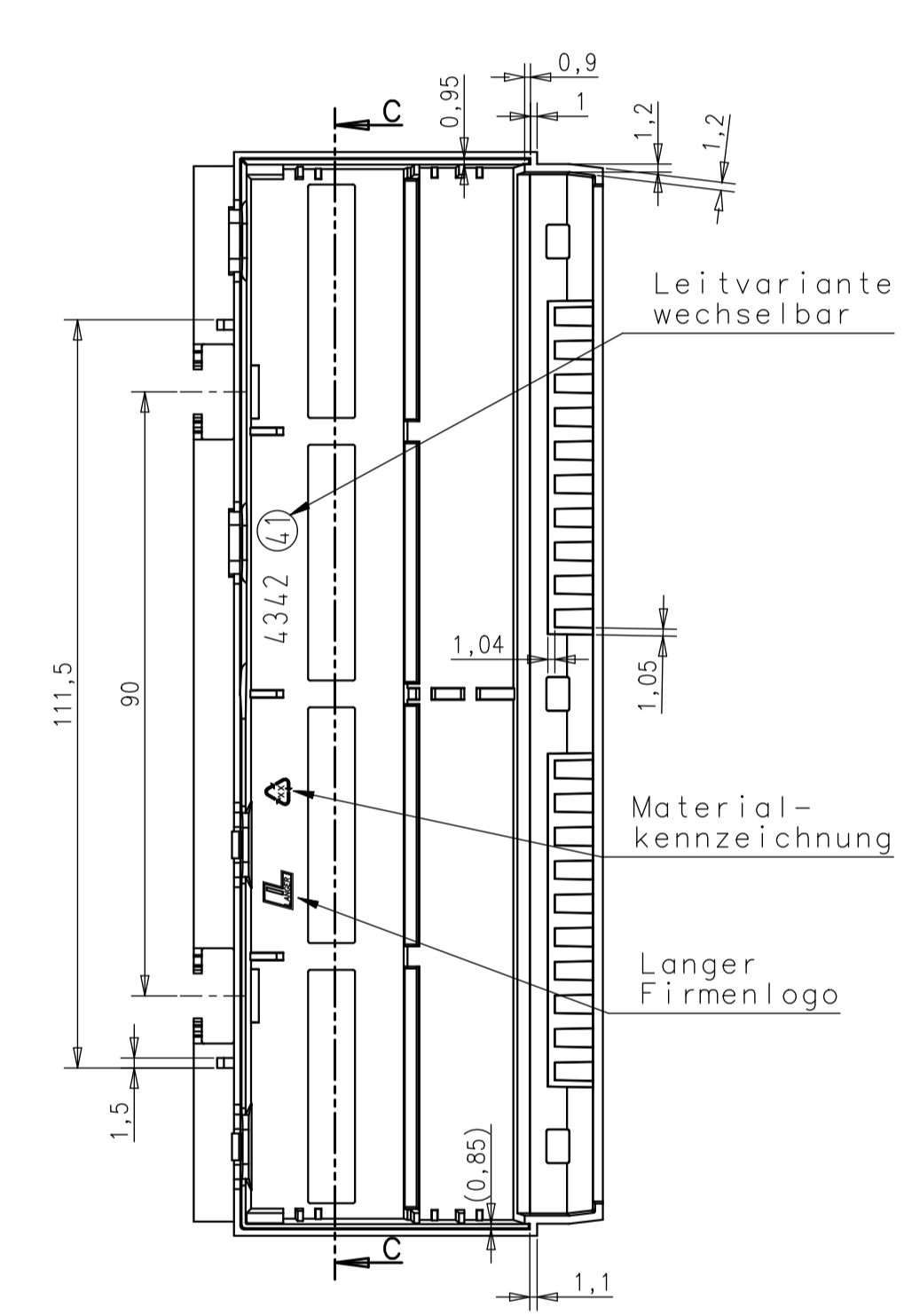
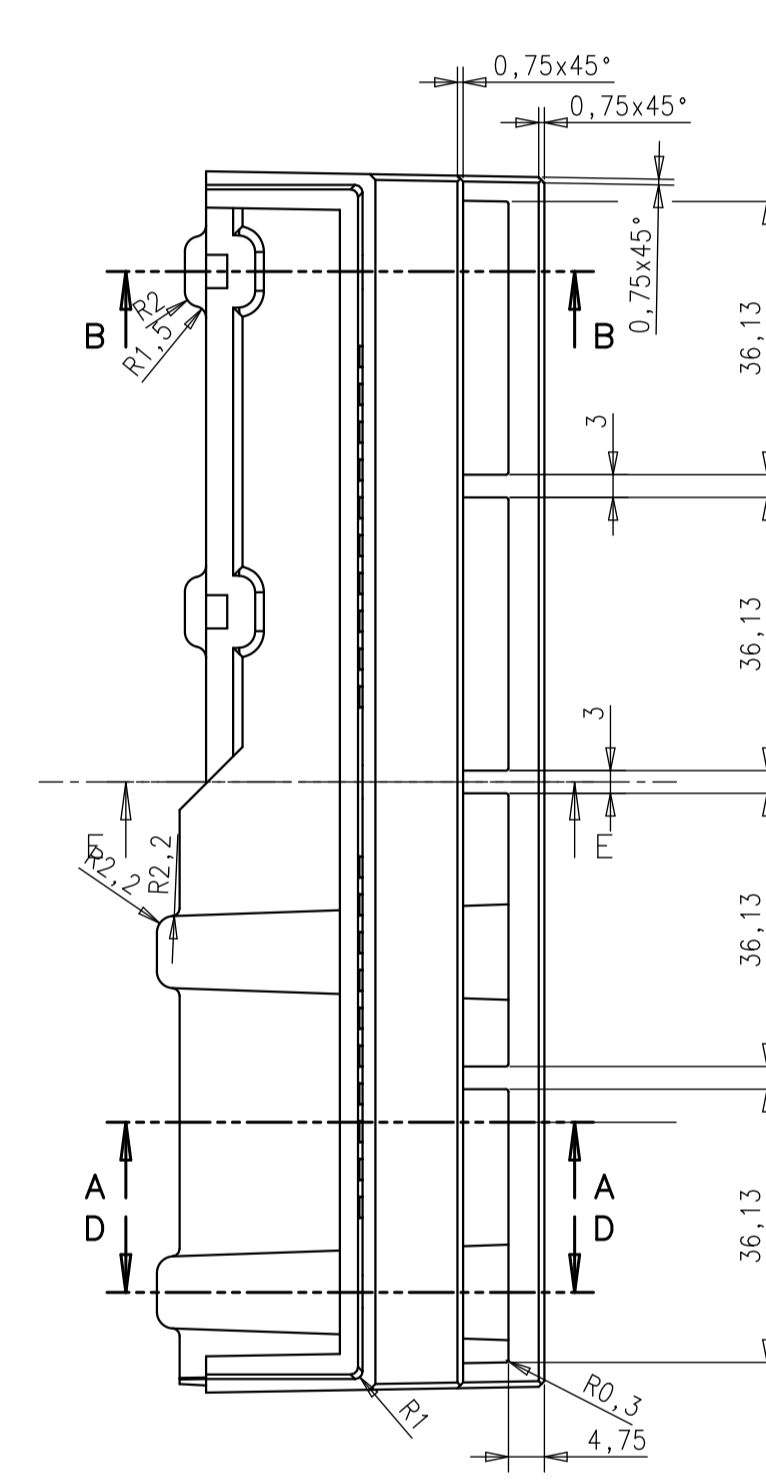
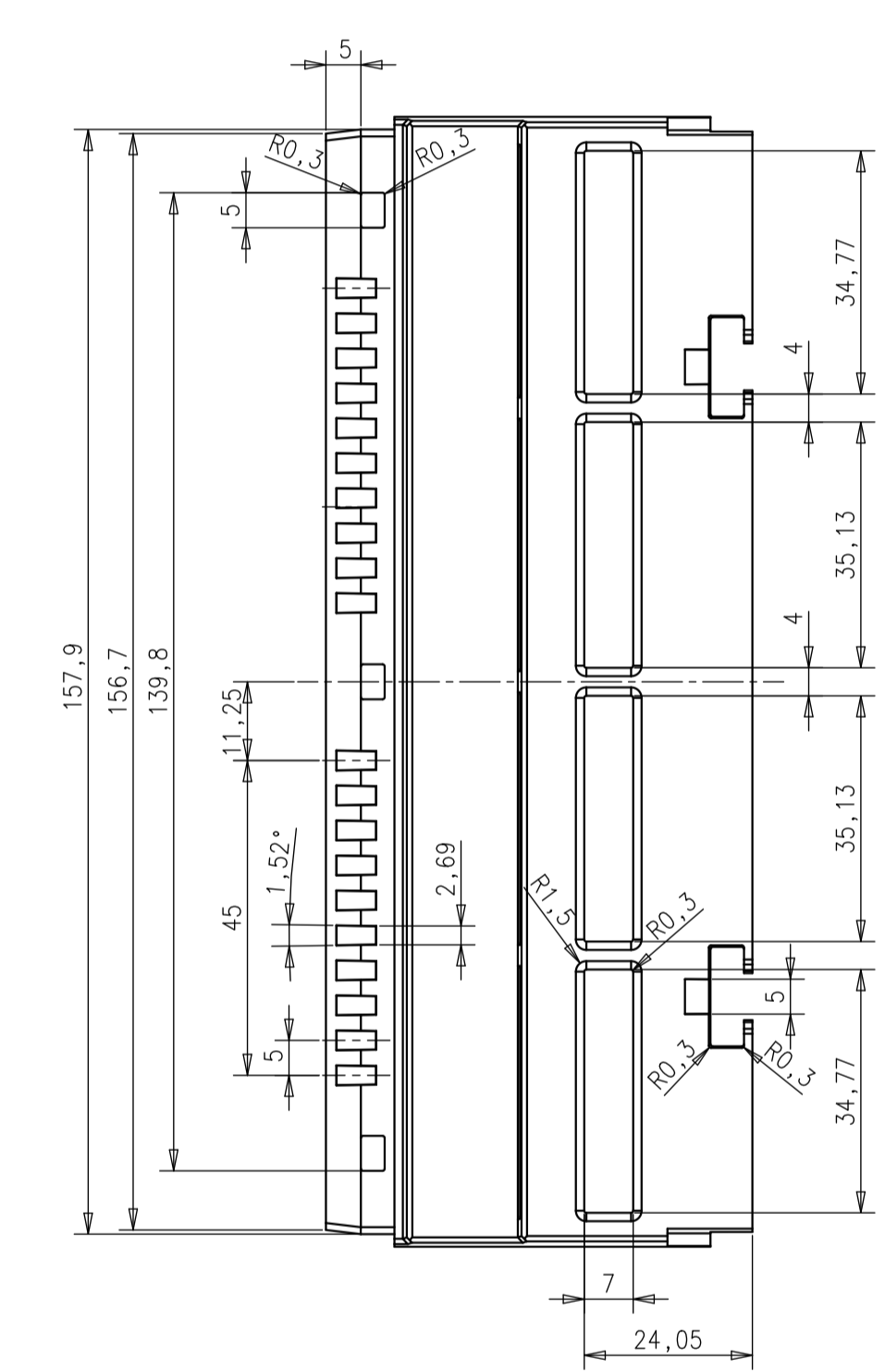
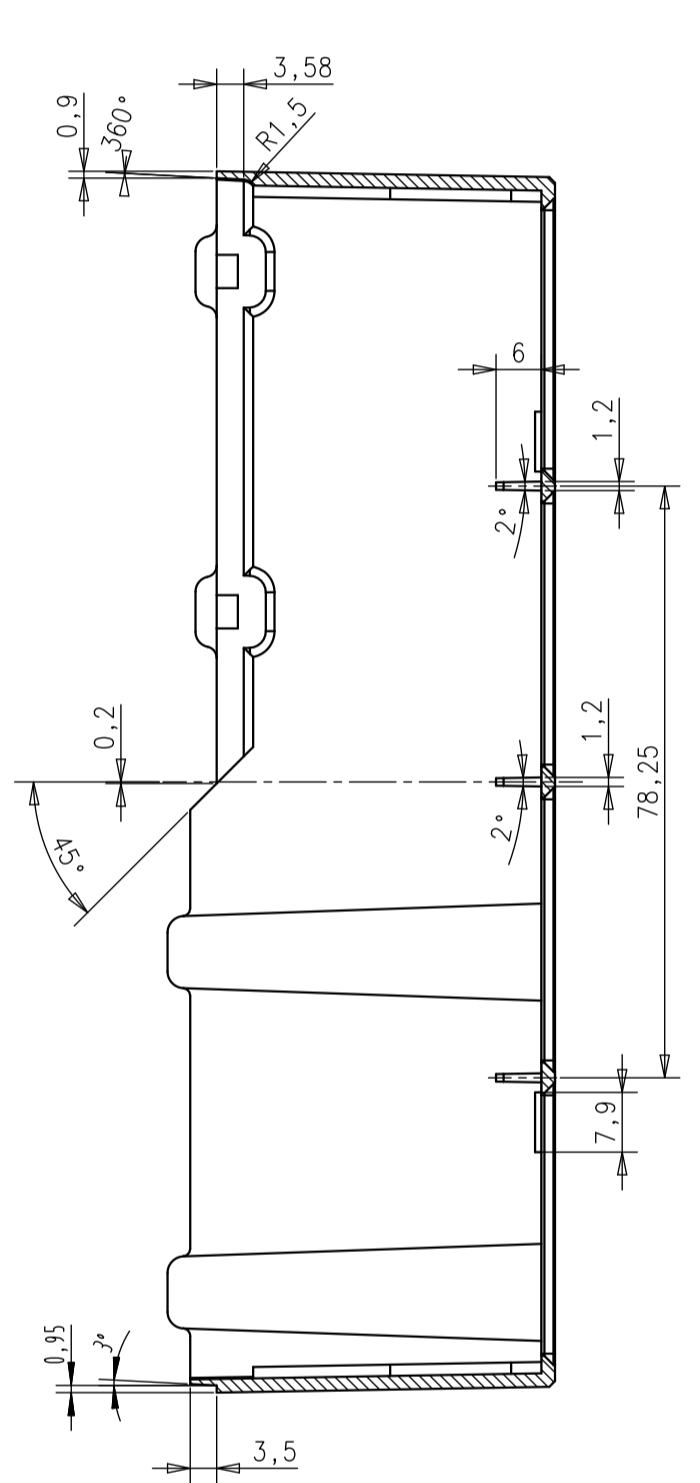
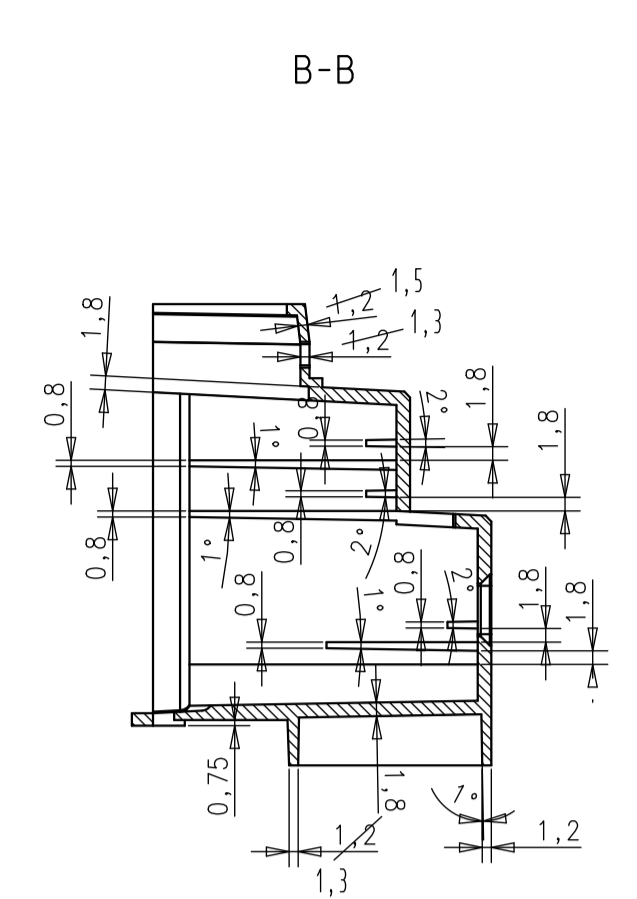
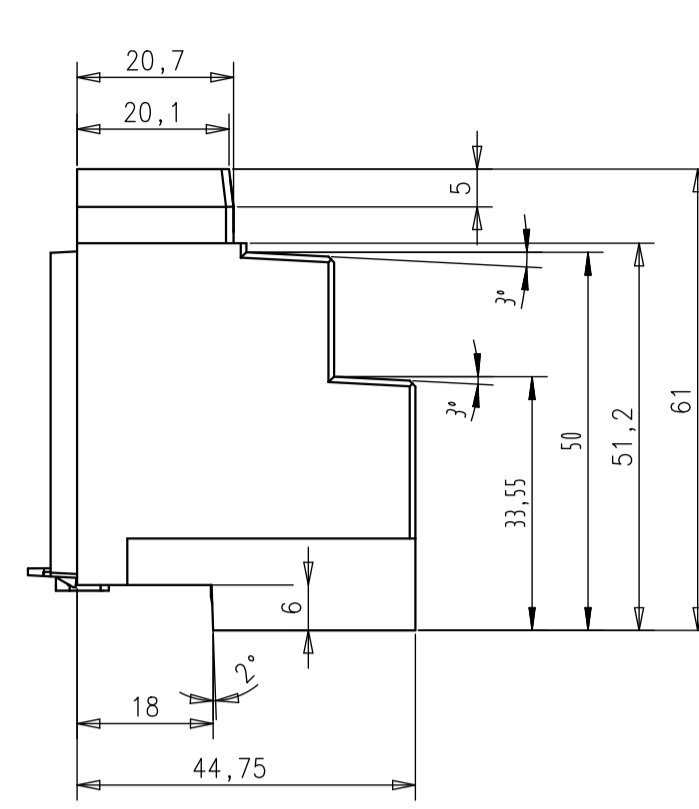
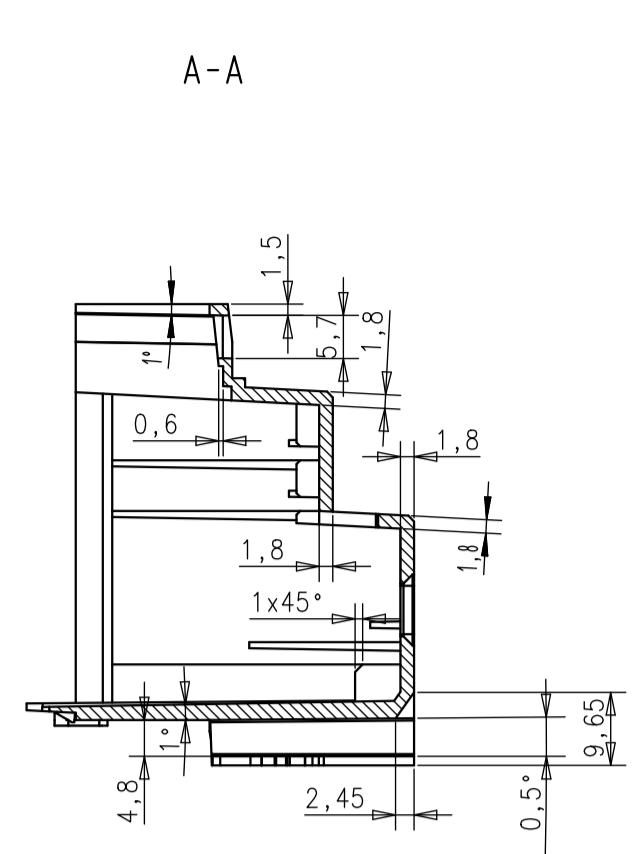
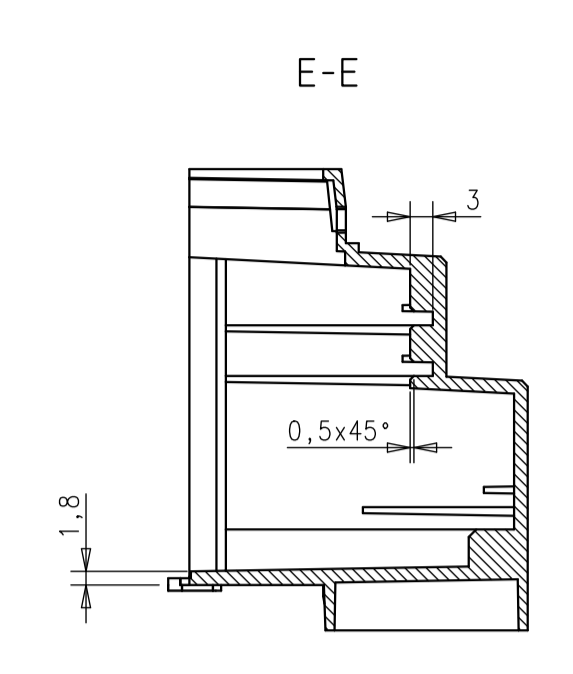
Standard packaging includes the 25-kg-bag and the 1000 kg octabin (octagonal container). Other forms of packaging are possible subject to agreement.

**Management:**  
Tim Hencken

**Commercial register:**  
HRB 8229  
Amtsgericht Bad Oeynhausen  
USt-Id.-Nr.: DE242701328

**Bank account:**  
Sparkasse Herford (BLZ 494 501 20)  
KTO: 140 203 019

**SITRAPLAS GmbH**  
Maybachstraße 23  
D-32257 Bünde  
Germany



fehlende Masse nach 3D-Daten  
unbemaste Innenkanten ohne Funktion R 0,3  
Sichtflaeche erodiert VDI3400 Ref.27

Projekt: Artikel - 4337 - 4343	Freimasstoleranzen nach DIN: 16901 Gruppe: 130	Letztes Plot Datum: 02.03.2005	Massstab: 1:1 Werkstoff: PC V-0	Format: A1
	Datum 02.03.2005 Bearb.: K. Eickelmann	Name Langer	Benennung Gehäusehälfte 9TE	
	Norm			Blatt 1
	Zeichnungsnummer: 4342 41			Ers. d. .
Zust.	IsMasskorrektur	28.11.2007	Gast	www.werner-langer.de