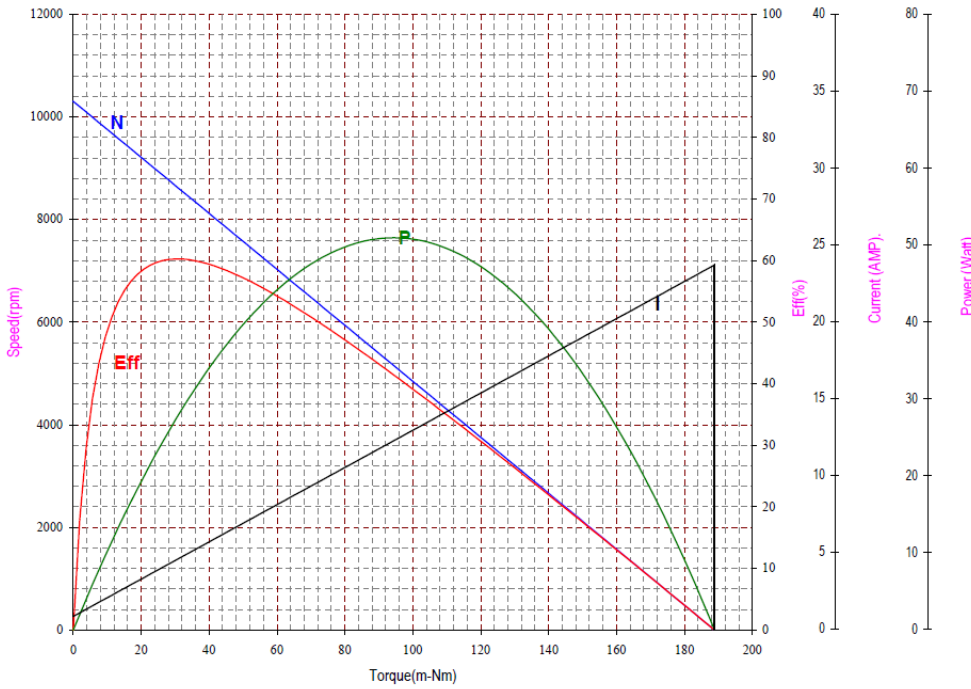


SOF NO : 61101-999
 Project No.: 00D1045
 Winding : 0.41 - 15
 Motor test reference no : HC677LG



Performance (In an ambient temperature of 25 -30 C)
 Motor tested rapidly to prevent significant temperature rise.

At a constant voltage of 10.00 Volts
 With a circuit resistance 0.000 Ohms

At No Load
 Speed : 10304 Rpm
 Current : 0.893 Amp

At stall (Extrapolated)
 Torque : 188.881 m-Nm
 Current : 23.722 Amp

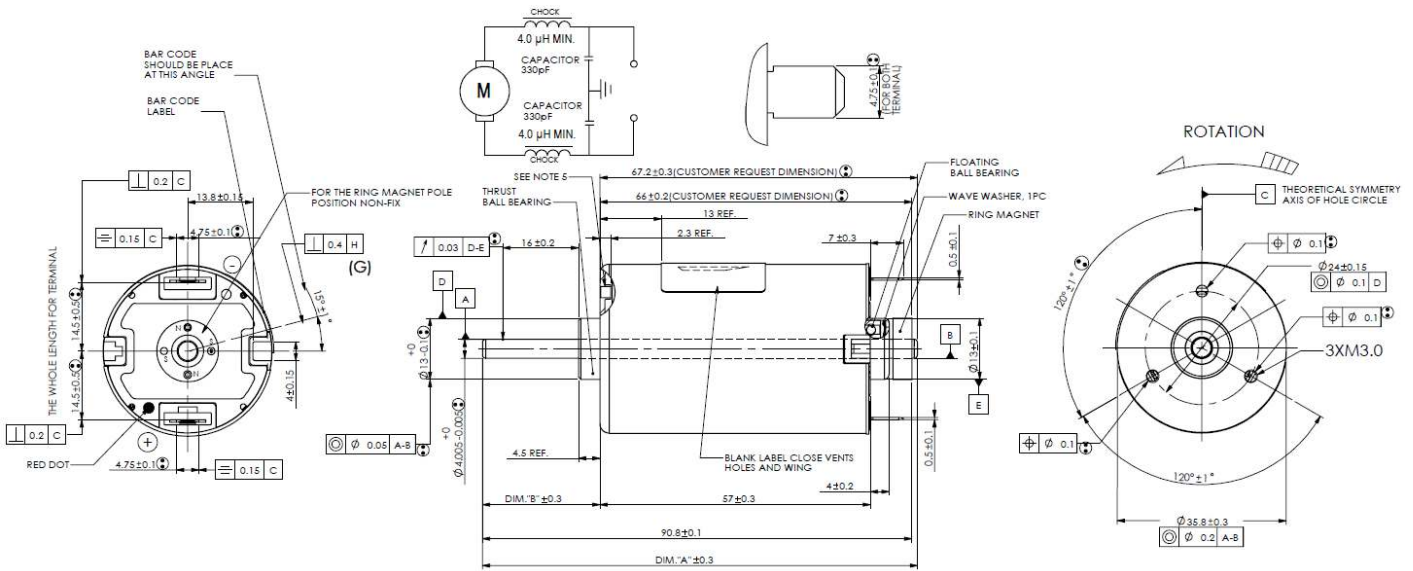
At maximum efficiency
 Efficiency : 60.28 %
 Torque : 30.697 m-Nm
 Speed : 8629 Rpm
 Current : 4.603 Amp
 Output : 27.750 Watts

At maximum power
 Torque : 94.441 m-Nm
 Speed : 5152 Rpm
 Current : 12.308 Amp
 Output : 50.971 Watts

Characteristics
 Torque Constant : 8.274 m-Nm/Amp
 E.M.F Constant : 8.274 mV/rad/sec
 Dy Resistance : 0.422 Ohms
 Motor Regulation : 54.551 Rpm/m-Nm

At Torque Level:
 Torque: 40.000 m-Nm
 Speed: 8122 Rpm
 Current: 5.728 Amp
 Efficiency: 59.42 %
 Output: 34.033 Watts

COMPUTER PRINT-OUT NOMINAL MOTOR CURVES.
 Performance and characteristics are measured based on limited motor samples only.



- NOTES:
1. LENGTH OF SHAFT, DIM."A" 92.0 mm.
 2. FROM EXTENSION, DIM."B": 24.8 mm, MEASURED WITH SHAFT PUSHED AGAINST STEEL END CAP.
 3. DIRECTION OF ROTATION: ANTI-CLOCKWISE WHEN VIEWING MOTOR OUTPUT SHAFT END WITH POSITIVE VOLTAGE APPLIED TO POSITIVE TERMINAL.
 4. AXIAL END PLAY: 0.12 mm MAX.
 5. TAPPED HOLES CAN ACCEPT MAX. USABLE MALE SCREW LENGTH OF 4.3mm.
6. 100% TESTING OF THE FOLLOWING POINTS:
- ROTATION DIRECTION
 - SPEED UNDER NOMINAL TORQUE(20mNm)
 - NOMINAL CURRENT(20mNm)
 - ISOLATION STRENGTH