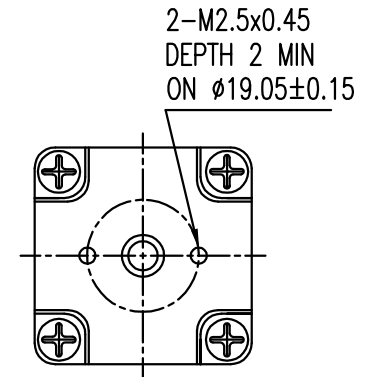
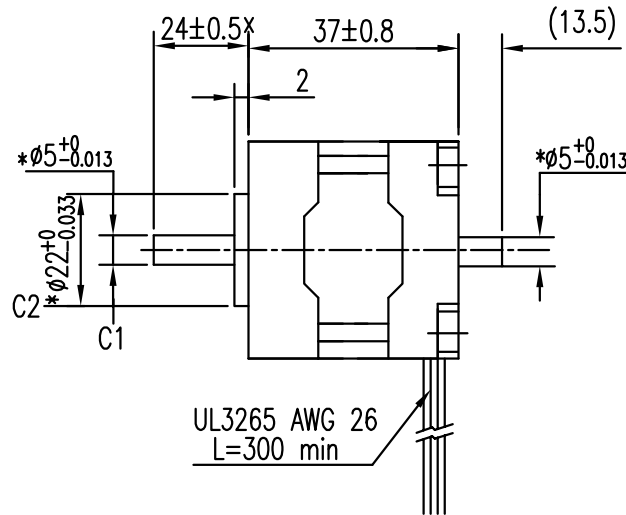
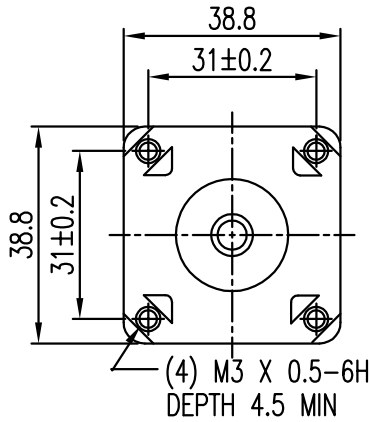


DIMENSION (UNIT : mm)



SPECIFICATION

RATED VOLTAGE (VM)DC	6
AMPS/PHASE	0.8
RESISTANCE /PHASE Rm (Ohms)@25°C	7.5 ±10%
INDUCTANCE/PHASE.mH @1KHz	11 ±20% *
STEP ANGLE (DEG)	0.9 *
STEP ACCURACY (NON-ACCUM)	±10%
HOLDING TORQUE (g-cm)	1850
ROTOR INERTIA (g-cm²)	24 *
WEIGHT (g)	240
MAXIMUM STARTING PULSE RATE/pps	1800

TEMPERATURE RISE	MAX.80°C
INSULATION RESISTANCE	100M ohm
DIELECTRIC STRENGTH	500VAC FOR ONE MINUTE
AMBIENT TEMPERATURE	0°C ~ 50°C

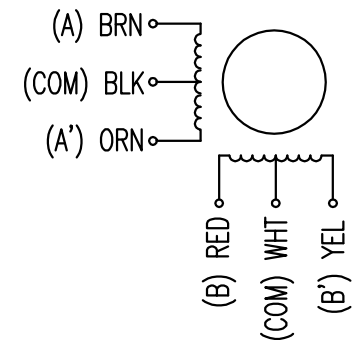
NOTES:

1. C1 DIAMETER RUNOUT TO BE 0.025 mm MAX.
2. C2 CONCENTRIC TO C1 W/IN 0.075 mm TIR.
3. X SURFACE PERPENDICULAR TO C1 W/IN 0.12 mm.
4. END CAPS BLACK PAINTED.
5. LAMINATED ROTOR.
6. * MEANS IMPORTANT ITEM.

FULL STEP 2 PHASE-Ex.,
WHEN FACING MOUNTING END (X)

STEP	BRN	RED	ORN	YEL	BLK/WHT
1	-	-			+
2		-	-		
3			-	-	
4	-			-	

*WIRING DIAGRAM



NANOTEC

SH4009M0806-B

SCALE FREE

X ±0.5
1PL ±0.2
2PL ±0.1
ANGLE ±30'

APVD

CHKD

DRN

SIGNATURE

26.04.2004

DATE

STEPPING MOTOR

DWG.NO

SH4009M0806-B_Z01

REV	DESCRIPTION	DATE	APVD