



DVBC-1

Quick Guide Manual

Before Operation, please read entire Manual thoroughly and retain for future reference.



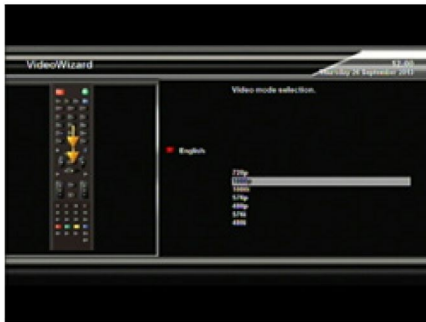
QUICK START

1. First time instalation using wizard

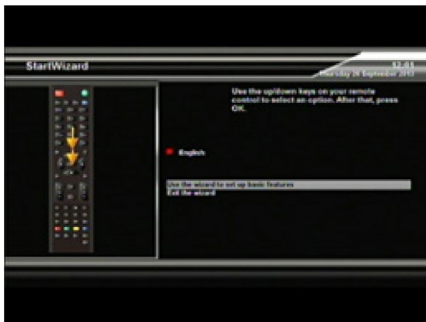
1.1. Please press OK if you can see this screen on your TV (if not – select a different input).



1.2. Video mode selection.



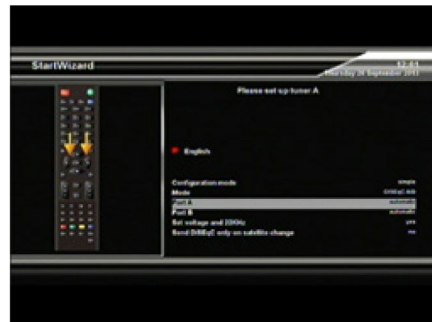
1.4 Set up basic features.



1.3. Language selection.

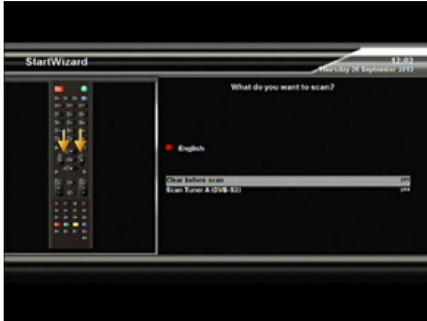


1.5 Set up tuner

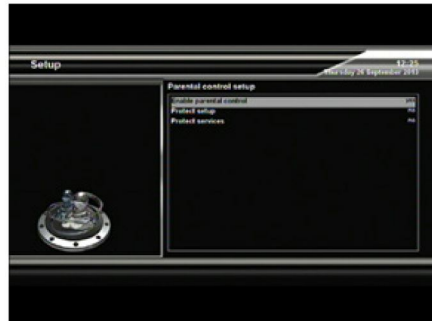
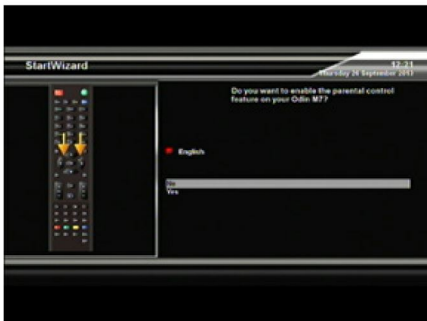


Another way is to select manual settings

1.6. Service searching. After a few minutes should be completed.

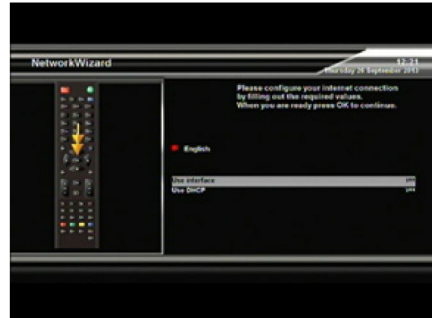
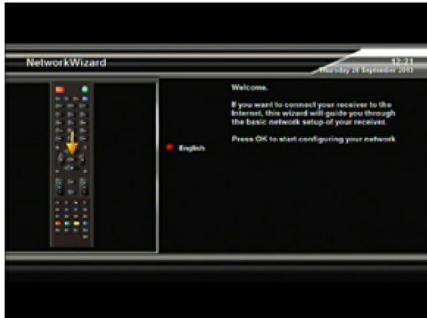


1.7 We can now set a parental lock.

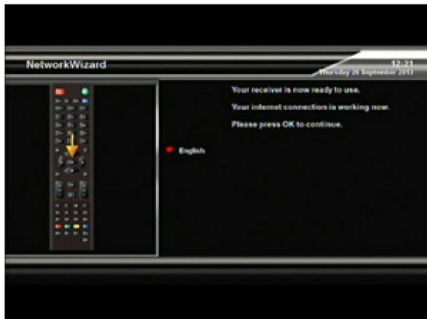




1.8. The last step – Network Wizard. You can use DHCP option. Some network we have to enter parameters manual – it depends on the operator.



Now we finish the Wizard and we can enjoy watching TV.



2. Basic operations

2.1. Switching channels.



CHANNEL +/- key Press to move to next channel. There are various channel zapping methods.

Press \uparrow / \downarrow key – if you choose this option – will call up the Channel Selection Menu.

Press CH+/CH- if you use this option – will call up the Channel Selection Menu.

Press \leftarrow / \rightarrow – if you use this option you – go to the previous or next channel

2.2. Volume Control

You can adjust the audio volume by pressing VOL+/- key. You can also mute or unmute the audio by pressing MUTE key.



2.3. Selecting Audio Track

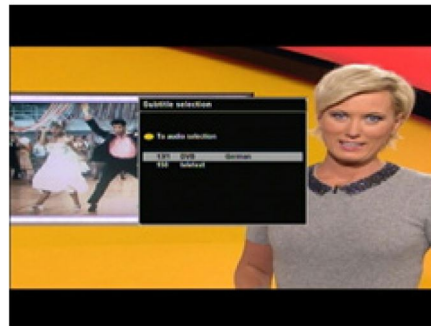
You can choose what audio tracks are available to choose by pressing AUDIO key. By using UP/DOWN key and COLOR key, you can select a different audio language or Stereo sound.

NOTE: Available option in this menu will defer depending on the service.



2. 4. Subtitle

You can see subtitle of the current program if the program provides the subtitle. Press SUBT key and Subtitle Selection menu appears as below.



2. 5. Teletext

You can call up Teletext information by pressing TTX key. It will take some time to load all the information.





2. 6. Program Information (Infobar)

Whenever you change the channel, infobar is always displayed for 5 seconds (default setting). Infobar is designed to provide you comprehensive information of the channel that you currently watching. Press OK to call up infobar.



2. 7. Channel List (Channel Selection Menu)

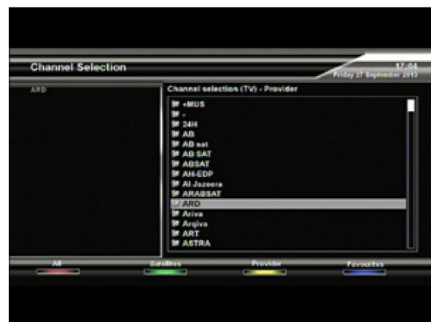
Press UP/DOWN or CH+/CH- key, this will active Channel Selection Menu as below.

Four types of the channel lists are available to help you manage your channel selection. RED displays the list of all scanned channels



GREEN displays the list of satellites scanned. Per each satellite, channels are arranged according to Services, Provider and New.

YELLOW displays the list of providers. BLUE displays the list of your favorite channels. In order of you to add certain channels to this Favourites list.



1. Call up the Channel Selection list by Pressing UP or DOWN key.
2. Go to All list by pressing RED key.
3. Select the channel that you want to add to the Favourites list.
4. Press MENU key on the selected channel and the following menu appears.
5. Choose 'add service to bouquet' and press OK.
6. Go to the Favourites list by pressing BLUE key to confirm that the selected channel is correctly included in the list.
7. Electronic Program Guide - (Eventview)
Press EPG.

The Electronic Program Guide (EPG) displays the program information of each channel, if provided, in time and date order. You can view the detailed program information by pressing GUIDE key and the menu, Eventview appears. Detailed information of the current channel will be displayed on EPG. On this menu, three options are provided.



(A) Safety Instructions

This product should not be disposed with other house hold wastes at the end of its working life. Please separate this from other types of wastes and recycle it responsibly to promote the sustainable reuse of material resources. This will help prevent harm to the environment or human health from uncontrolled waste disposal.

- This product operates only in the range of AC 100V~250V and 50Hz/60Hz.
Please check first your power supply to see if it fits this range.
Please be noted that you need to disconnect from the mains before you start any maintenance or installation procedures.
- Make sure that the power cord is placed in a position where it is easy to unplug it from the mains in an emergency.
- Do not overload a wall outlet, extension cord or adapter as this may cause electrical fire or shock.
- This product is not water-proof and should not be exposed to dripping, splashing, or any type of liquid.
- No objects filled with liquid such as base shall be placed on the product.
- Please do not clean the product with wet cloth, which may cause a short circuit.
- No wet objects should be placed near the product.
- Disconnect the power of the product before you connect the satellite cable to the product. Otherwise, it may cause damage to the LNB.
- The LNB must be earthed to the system earth for the satellite dish.
- Unplug the product and disconnect the antenna cable during a thunderstorm or lightening, especially when left unattended and unused for a long period of time.
This will prevent possible damages from power surges or lightening
- Place the product indoor.
- Do not expose the product to rain, sun or lightening.
- Do not place the product near any heat appliances as a radiator.
- Ensure that there is more than 10 cm distance from any electrical devices & wall.

(B) Packing Contents



Please check all package contents before using your product.

- Set Top Box
- Remote Control
- Batteries
- HDMI cable (Optional)
- D/C Power Adaptor
- User Manual

(C) Product Descriptions

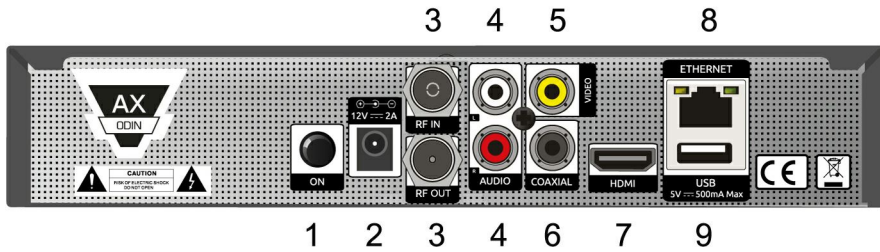
Front Panel



- ① Buttons: Standby
- ② Navigation Keys: Press to navigate up/down and left/right
- ③ USB: Connects the USB memory stick or external HDD
- ④ Smartcard reader slot: One smartcard slots are provided.
Insert smartcard with the IC chip pointing down.



Rear Panel



- ① ON : Powers On/Off
- ② DC-IN: Connects the detachable D/C power adapter.
- ③ RF-IN : One cable can be connected
- ④ Audio output : Connects to TV using RCA cable
- ⑤ Video output : Connects to TV using RCA cable
- ⑥ COAXIAL : Connects to a digital audio system using S/PDIF cable
- ⑦ HDMI : Connects to TV using a HDMI cable for both audio and video signals
- ⑧ Ethernet : Connects the set top box to network
- ⑨ USB : Connects the USB memory stick or external HDD

(D) Remote Control



- ① Power : To switch the receiver in and out of stand-by mode.
- ② Mute : Mutes the audio.
- ③ V/RADIO : Switches between TV and radio.
- ④ HD : Set the HDMI mode - optional.
- ⑤ V SIZE : Switches Display Format.
- ⑥ PORTAL : Press go to the Portal Menu – optional.
- ⑦ AUDIO : Press to select available audio language and audio type.
- ⑧ SUBT : Press to display the subtitle of the current channel if provided.
- ⑨ TXT : Press to display the teletext information of the current channel if provided.
- ⑩ Numeric Keys : Enters a service number for service change or to specify values for menu options
- ⑪ FAV : Display favourites channels – optional.
- ⑫ SAT : Select satellite – optional.
- ⑬ Menu : To enter to the main menu or to move to previous menu.
- ⑭ i : Show the information box of the current program.
- ⑮ ^: Navigates up on the menu options and use to call up channel list.
- ⑯ < : Navigates left on the menu options and use to call up channel list.
- ⑰ OK : Confirms the selected menu option.
- ⑱ > : Navigates right on the menu options and use to call up channel list.
- ⑲ v : Navigates down on the menu and use to call up channel list.
- ⑳ Exit : Exits the current menu option into the live mode, or switches one step back of the menu.
- ㉑ EPG : Display the Electronic Program Guide information if provided.
- ㉒ LIST : Display the list of recordings stored on the internal HDD if any – optional.
- ㉓ CH+/- : Navigates through the scanned channel list.
- ㉔ VOL +/- : Adjusts the audio volume.
- ㉕ Recall : One step backward.
- ㉖ Playback keys.
- ㉗ OPT+ : optional.
- ㉘ Sleep : optional.
- ㉙ ← : optional.
- ㉚ DELAY : optional.
- ㉛ Color keys : Each key is assigned a specific function that maybe different in each menu.
- ㉜ TIMER: optional.
- ㉝ MEDIA : optional.
- ㉞ REC LIST : optional.
- ㉟ PAGE UP : Move the channel list in pages.
- ㊱ PAGE Down: Move the channel list in pages.

(E) Main Features

- 500MHz DMIPS Processor
- Linux Operating System
- Media Player
- Downloadable Plug-ins supported
- 1 x Smartcard Reader
- MPEG2/H.264 Hardware Decoding
- 1 x DVB-C Tuner
- Status Indicator
- 256MB NAND Flash/512MB DDR Memory
- 10/100MB Ethernet Interface
- 2 x USB 2.0
- HDMI
- Composite Video
- EPG supported
- Automatic & Manual Service Scan supported
- Skin change supported
- Power Supply by External SMPS

(F) Installation of Set Box

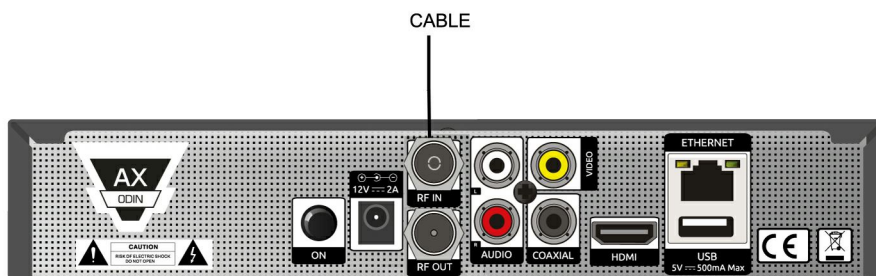
This chapter will guide you through the whole installation process of Set Top Box. Please read each section carefully to make sure that the system runs properly

1. Connecting Cable

Set Top Box is integrated with one cable tuner, and one of the first steps is to connect cable to Set Top Box in order to gain optimal signal quality.

A. Connecting Cable

Connect cable to LNB-IN.

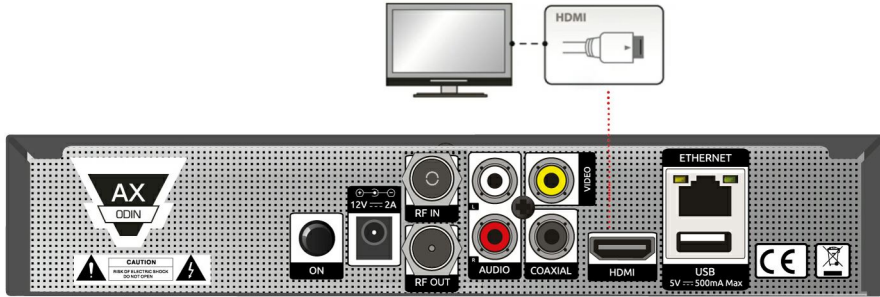


2. Connecting the TV

Set Top Box provides a variety of audio/video connection methods.

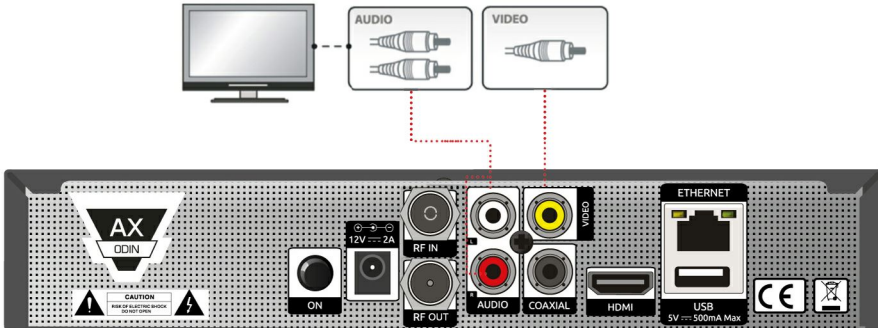
A. Connecting TV via HDMI Cable

For the sake of the best picture quality, especially for digital TV, HDMI connection is recommended. Most HDTVs have HDMI connectors to ensure the highest picture quality. In the rear panel of Set Top Box one HDMI connector is available for this purpose. Connect your TV to Set Top Box using a HDMI cable as follows.



B. Connecting TV via A/V cable

This secondly recommended TV connection for TV is via Composite cable. Set top box provides Composite video has normally three connectors at the both end; one Video (Yellow) and two Audio (White / Red). Connect your TV to Set top box as follows.



3. Power ON/OFF

[: Press or Press 'Standby/Reset']

There are several ways to turn your Set Top Box ON or OFF

• Complete Power Shutdown

There is a Power Switch in the rear panel and once it is ON, you do not need to turn it on or off each time.

It takes a longer time to boot the system if you turned it off by this switch.

• Standby Mode

POWER key is normally used to turn the power of Set Top Box on or off.

If you press POWER,

it instantly switches your Set Top Box off or on. In this mode, the system is not completely shutdown and thus it takes a shorter time to turn it on and off.

• Deep Standby Mode

Deep Standby is used to reduce the standby power consumption.

Set Top Box is designed to be energy efficient and to guarantee the power consumption to be under 1W in the deep standby mode





DVBC-1

Schnell Start Anleitung

Vor Inbetriebnahme lesen Sie das Manuel bitte ganz durch und bewahren Sie es gut auf um zukünftig nachzuschlagen.



Erstinstallation

1. Verwendung des Assistenten

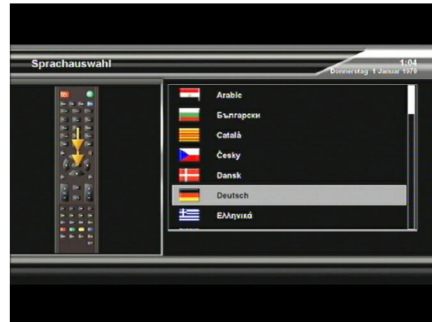
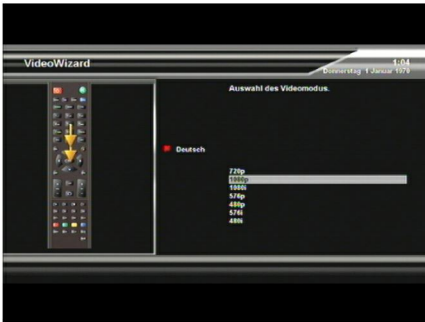
1.1. Bitte drücken Sie OK, wenn Sie diesen Bildschirm auf Ihrem TV sehen können (wenn nicht - wählen Sie einen anderen Eingang).



1.2. Auswahl Videomodus.

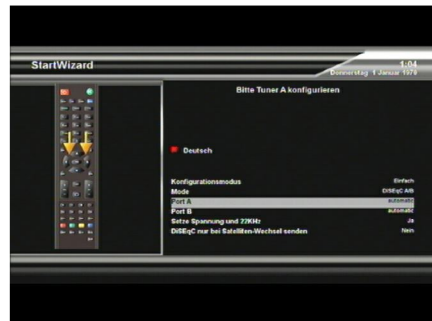
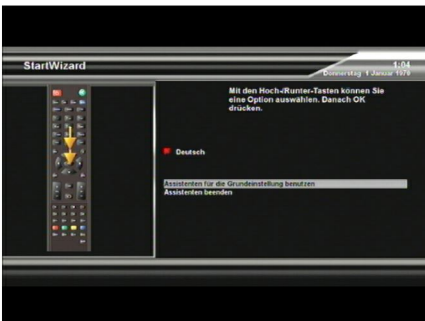


1.3. Sprachauswahl.



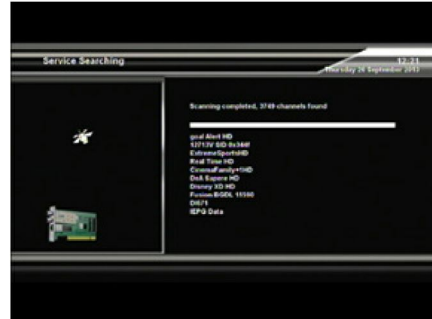
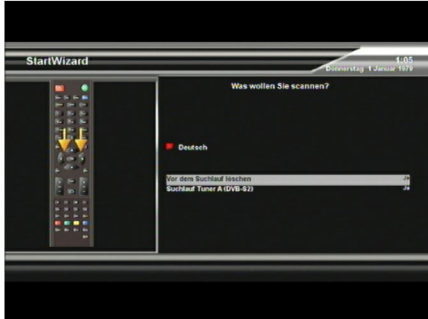
1.4. Einrichten Basis Installation.

1.5. Tunereinstellungen

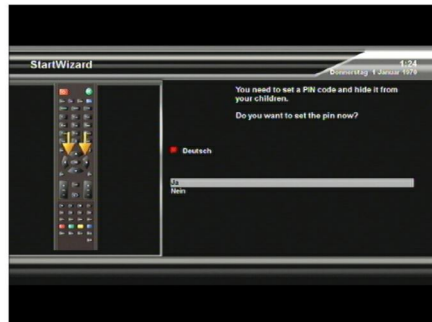
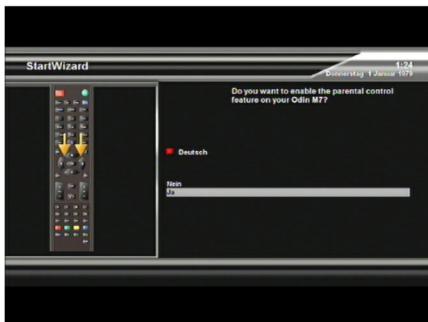


Ein anderer Weg ist die manuelle Einstellung – Hier sollten sie den Namen des Satelliten wissen.

1.6. Satellitensuchlauf sollte nach ein paar Minuten abgeschlossen sein, abhängig von den gescannten Satelliten.

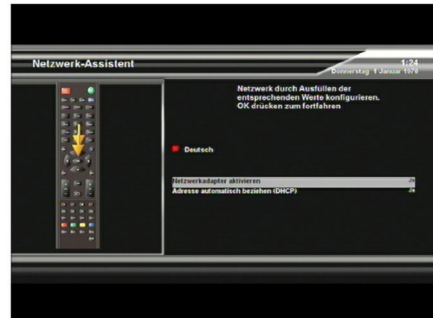
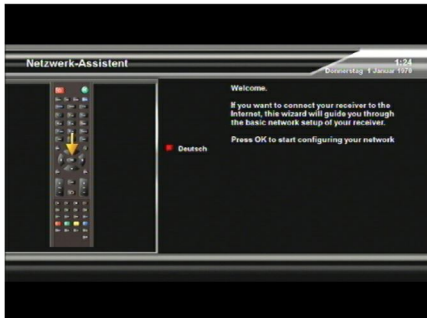


1.7 Einstellung Kindersicherung.

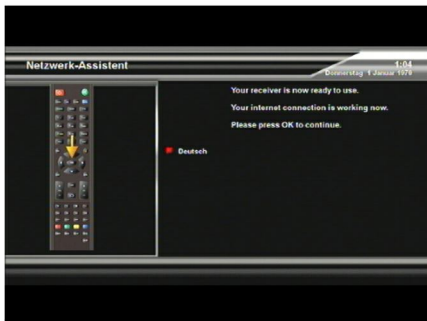




1.8. Letzter Schritt – Netzwerk Assistent. Wählen sie DHCP. In einigen Netzwerken muss dies manuell eingestellt werden, abhängig vom Netzwerk.

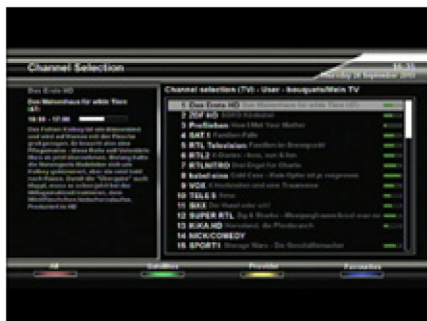


Jetzt können sie den Assistenten beenden und ihr TV Programm ansehen.



2. Grundlegende Bedienung

2.1. Kanäle umschalten.



Kanal +/- Taste drücken um zum nächsten Kanal zu schalten.
Es gibt verschiedene Umschaltmethoden.

Drücke \uparrow/\downarrow Taste – Wenn sie diese Option wählen – Rufen sie das Menü Kanal umschalten auf.

Drücken CH+/CH- – Wenn sie diese Option wählen – Rufen sie das Menü Kanal umschalten auf.

Drücke \leftarrow/\rightarrow – Wenn sie diese Option wählen – Gelingen sie zum nächsten oder vorherigen Kanal

2.2. Lautstärke regulieren

Sie können die Lautstärke durch Drücken der Taste VOL+/- verändern. Ton Stumm schalten können sie durch Drücken der MUTE Taste.



2.3. Ändern der Audiosprache.

Hier können sie festlegen, welche Audio Tonspur für sie passend ist. Durch Drücken der UP/Down Taste können sie verschiedene Sprachen oder Stereoton auswählen.

Wichtig: Der Inhalt dieses Menüs ist abhängig vom gewählten Kanal.



2. 4. Untertitel

Untertitel können sie abrufen, wenn das entsprechende Programm diese Daten zur Verfügung stellt. Drücken sie die SUBT Taste Und das Untertitelmenü öffnet sich.



2. 5. Teletext

Teletext können sie durch Drücken der TTX Taste aufrufen. Es kann einige Zeit dauern bis alle Informationen geladen sind.





2. 6. Programm Information (Infobar)

Die Infobar erscheint beim Programmwechsel und zeigt Ihnen die folgenden Informationen an. Durch Drücken der OK - Taste lässt sie sich jederzeit anzeigen.



2. 7. Kanal-Liste

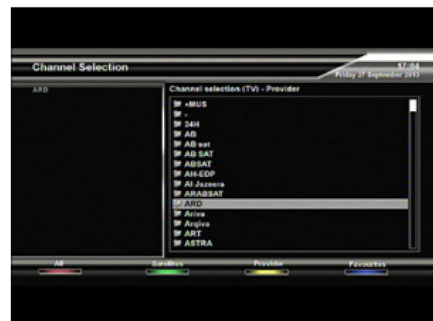
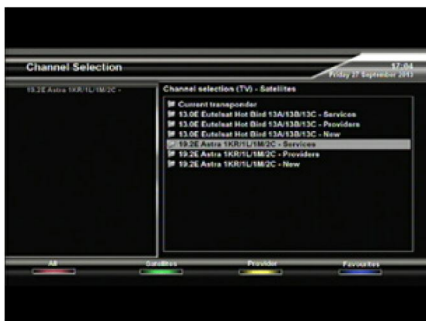
Drücken sie UP/DOWN oder CH+/CH- Taste, Um das Kanal Menü aufzurufen. Ihnen beim Managen der Kanäle hilft.

Hier können sie vier Typen der Listen auswählen, die ihnen beim Managen der Liste hilft.



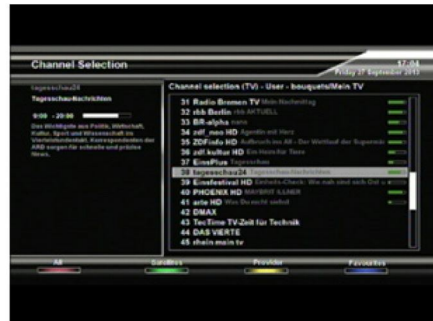
Grün Zeigt die gescannt Satelliten.
Rot zeigt die gescannt Sender an.

Rot zeigt die gescannt Sender an.
Blau zeigt Ihnen die Favoritenliste, die sie beim Bearbeiten der Kanäle anlegen können.



1. Rufen Sie die Kanal Auswahlliste durch Drücken der Up - oder Down -Taste auf.
2. Gehen sie zu Alle mit der roten Taste.
3. Wählen sie den Kanal aus, den sie in die Favoritenliste hinzufügen wollen.
4. Drücken sie Menü für folgende Optionen.
5. Wählen Sie "Zu Bouquet hinzufügen" und drücken Sie OK.
6. Gehen sie zur Favoritenliste und drücken sie die blaue Taste um den ausgewählten Kanal hinzuzufügen.
7. Electronic Program Guide - (Eventview)

Der Electronic Program Guide (EPG) (zu deutsch elektronischer Programmführer) zeigt Ihnen ähnlich einer Fernsehzeitschrift, Informationen zum Fernsehprogramm an. Durch Drücken der GUIDE Taste erhalten sie Programminformationen. Drücken sie nun die Menüaste erhalten sie ausführliche Informationen zur Sendung.





(A) Sicherheitshinweise

Dieses Gerät soll nach Gebrauchsende nicht mit dem Hausmüll entsorgt werden. Bitte trennen Sie dieses entsprechend von anderen Abfällen, um eine Belastung der Umwelt zu vermeiden, eine Wiederverwendung von wertvollen Materialien sicherzustellen.

- Dieses Produkt funktioniert nur in den Bereichen AC100V-250V und 50Hz/60Hz.
- Das Gerät muss vom Netz getrennt werden, bevor eventuelle Wartungen oder Installationen vorgenommen werden.
- Stellen Sie sicher, dass der Netzstecker das Anschlusskabel in Notsituationen schnell vom Netz getrennt werden kann.
- Stellen Sie sicher, dass Steckdosen, Verlängerungskabel, etc., nicht überlastet werden, dies kann zu einem Brand und/oder Kurzschluss führen.
- Dieses Produkt ist nicht wassergeschützt und soll nicht Tropf- und Spritzwasser oder jeglicher anderer Flüssigkeit ausgesetzt werden.
- Stellen Sie keine Vasen oder andere mit Flüssigkeit gefüllten Behälter auf das Gerät.
- Bitte reinigen Sie das Gerät nicht mit einem nassen Tuch, dieses kann einen Kurzschluss hervorrufen.
- Stellen Sie in die Nähe des Gerätes keine Behältnisse mit Flüssigkeiten.
- Trenne Sie das Gerät vom Netz bevor Sie das Satellitenkabel anschliessen. Ansonsten ist eine Beschädigung des LNB nicht ausgeschlossen.
- LNB/Satellitenantenne müssen nach den gültigen Vorschriften geerdet sein.
- Trennen Sie das Gerät vom, Antennenkabel während eines Sturmes oder Gewitters, vor allem wenn das Gerät für einen längere Zeit unbeaufsichtigt ist. Dieses schützt vor möglichen Schäden durch Blitz und/oder Überspannungen.
- Das Gerät ist im Haus aufzustellen.
- Das Gerät nicht Regen, Sonne oder Gewittern aussetzen
- Das Gerät nicht in der Nähe von Hitzequellen, z.B. Heizungen aufstellen.



(B) Packing Contents



Bitte überprüfen Sie die Vollständigkeit des Lieferumfangs:

- Receiver
- Fernbedienung
- Batterien
- HDMI Kabel (Optional)
- A/C Adapter
- Schnell Start Anleitung

(C) Produktbeschreibung

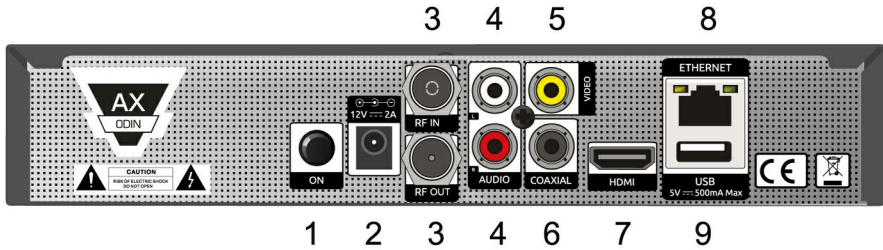
Vorderseite



- ① Taste: Power AN/Aus
- ② Tasten: Zum Navigieren Hoch/Runter und links/rechts
- ③ USB: Verbindet USB Stick oder externe Festplatten
- ④ Smartcard Einschub: Ein Smartcard Slot ist vorhanden



Rear Panel



- ① ON : Netzschalter
- ② DC-IN: Verbindet extern D/C Netzadapter.
- ③ LNB-IN : Anschluss des Kabels
- ④ Audio Ausgang : Verbindet TV über RCA Kabel
- ⑤ Video Ausgang : Verbindet TV über RCA Kabel
- ⑥ COAXIAL : Anschluss eines Dolby Digital Verstärkers über ein S/PDIF Kabel
- ⑦ HDMI : Verbindet TV mit einem HDMI Kabel für Audio und Video Signal
- ⑧ Ethernet : Verbindet PC oder andere STB mit AX ODIN
- ⑨ USB : Verbindet USB Stick oder externe Festplatte

Fernbedienung



- ① Power : Ein/Aus – Standy Modus
- ② Mute : Stummschaltung
- ③ TV/RADIO : Schalten zwischen TV und Radio
- ④ HD. Taste :Einstellen des HDMI Bildmodus
- ⑤ V SIZE : Formatschaltung.
- ⑥ PORTAL : Zeigt den Inhalt vom TV Portal Service an– optional.
- ⑦ AUDIO : Zeigt die auswählbare Audio Option an (z.B. AC3, Stereo)
- ⑧ SUBT :Zeigt, falls angeboten, Untertitel des aktuellen Programmes an.
- ⑨ Informationen des aktuellen Senders, wenn angeboten.
- ⑩ Zifferntasten : Zifferntasten zur Direkteingabe
- ⑪ FAV : Anzeige FAV Liste – optional.
- ⑫ SAT : Auswahl Satellit – optional.
- ⑬ Menu : Hauptmenü
- ⑭ i : Zeigt die Informationsbox an.
- ⑮ ^: Navigiert auf in den Menüoptionen
- ⑯ < : Navigiert nach links in den Menüoptionen
- ⑰ OK : Bestätigen von Menüinhalten.
- ⑱ > : Navigiert nach rechts in den Menüoptionen.
- ⑲ v : Navigiert ab in den Menüoptionen
- ⑳ Exit : Menü gänzlich verlassen, oder nur einen Schritt im Menü zurückgehen
- ㉑ EPG : Electronic Program Guide zeigt Informationen zum Programm.
- ㉒ LIST : Zeigt Liste der Aufzeichnungen – optional.
- ㉓ CH+/-: Zwischen den Sendern blättern.
- ㉔ VOL +/- : Lautstärkeregelung
- ㉕ Recall : Zurück zum letzten Kanal.
- ㉖ REC Aufnahmetaste.
- ㉗ OPT+ : optional.
- ㉘ Sleep : optional.
- ㉙ ← : optional.
- ㉚ DELAY : optional.
- ㉛ Farbige Tasten : Jede Taste übernimmt eine bestimmte, je nach Menü unterschiedliche Funktion
- ㉜ TIMER: Sleep Timer Einstellung (optional)
- ㉝ MEDIA : optional.
- ㉞ Playlist : Zeigt Senderliste während der aktuellen Wiedergabe. (optional)
- ㉟ Seite hoch : Bewegen der Kanallisten auf Seiten
- ㊱ Seite runter: Bewegen der Kanallisten auf Seiten

(E) Hauptfunktionen

- 500MHz MIPS Prozessor
- Linux Operating System
- Media Player
- Plug-ins herunterladbar
- 1 x Smartcard Reader
- MPEG2/H.264 Hardware Decoding
- 1 x DVB-C Tuner
- Status Indikator
- 128MB NAND Flash/512MB DDR Memory
- 10/100MB Ethernet Interface
- 2 x USB 2.0
- HDMI
- S/PDIF für digitalen bit stream out (optional)
- EPG unterstützt
- Automatic & Manual Service Scan unterstützt
- Oberflächenwechsel (skin) unterstützt
- Netzversorgung durch externes Netzteil und Netzschalter
- OSD 3D
- RCA
- Sleep Timer
- Composite Video (RGB)
- Schnelle und einfache Installation und benutzerfreundliche Bedienungsanleitung
- Wenig Stromverbrauch

(F) Installation des AX ODIN

Dieses Kapitel wird Sie durch den gesamten Installationsprozess des Receivers führen.

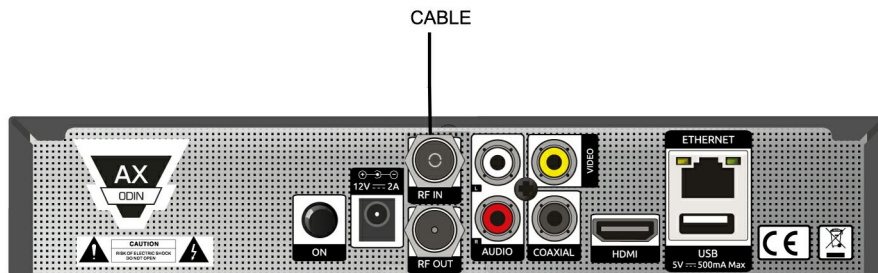
Bitte lesen Sie jedes Kapitel sorgfältig, damit das System dann auch einwandfrei funktioniert.

1. Anschluss

Der Receiver ist ausgestattet mit einem Kabeltuner, und einer der ersten Schritte ist, die Verbindung mit dem Kabel dass eine optimale Signalqualität erreicht wird.

A. Verbindung mit dem Kabel

Kabel an LNB-IN.

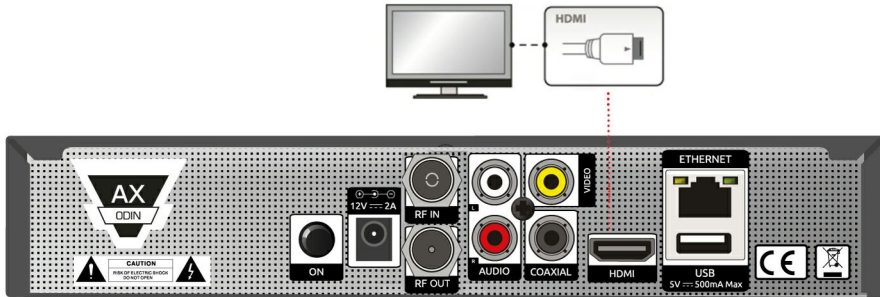


2. Anschluss TV

Der Receiver bietet unterschiedliche Anschlussmöglichkeiten für Audio/Video

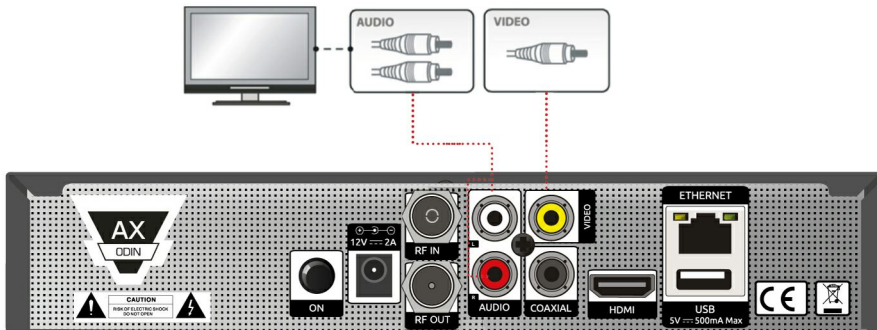
A. Anschluss TV über HDMI Kabel

Um beste Bildqualität zu erreichen, besonders für Digital TV, wird ein HDMI Anschluss empfohlen. Die gängigen HDTVs haben HDMI Anschlüsse für hohe Bildansprüche. An der Rückseite des Receivers ist ein solcher Anschluss verfügbar. Verbinden Sie TV und Receiver mit einem HDMI Kabel wie folgt.



B. Anschluss TV über RCA (Video) Kabel

Der Receiver verfügt ebenso über Composite Video Anschlüsse. Das Composite Kabel hat normalerweise drei Anschlüsse an beiden Enden; Video (gelb) und zwei für Audio (weiß/rot). Verbinden Sie es am TV wie folgt.



3. Power ON/OFF

[: Drücken 'Standby/Reset']

Dies ist der einfachste Weg, den AX Odin Ein oder Aus zu schalten

• **Komplette Abschaltung**

Wenn der Netzschalter an der Rückseite eingeschaltet ist,, brauchen sie nicht den Schalter betätigen um das gerät ein oder aus zu schalten.

Es braucht eine lange Zeit im zu Booten, wenn sie das Gerät am Netzschalter ausschalten.

• **Standby Mode**

POWER-Taste wird normalerweise verwendet, um die Set-Top-Box ein-oder auszuschalten.

Hier können sie den Receiver ein oder aus Schalten. Er ist nicht komplett heruntergefahren. Somit wird der Einschaltvorgang verkürzt.

• **Deep Standby Mode**

Deep - Standby wird erwendet, um den Standby-Stromverbrauch zu reduzieren.

Der Receiver ist so konzipiert, das er im Stand By Mode nicht mehr wie 1 W Strom verbraucht. Er arbeitet somit Energieeffizienz.







GNU GENERAL PUBLIC LICENSE

Version 2, June 1991

Copyright (C) 1989, 1991 Free Software Foundation, Inc.

51 Franklin Street, Fifth Floor, Boston, MA 02110-1301, USA

Everyone is permitted to copy and distribute verbatim copies of this license document, but changing it is not allowed.

Preamble

The licenses for most software are designed to take away your freedom to share and change it. By contrast, the GNU General Public License is intended to guarantee your freedom to share and change free software—to make sure the software is free for all its users. This General Public License applies to most of the Free Software Foundation's software and to any other program whose authors commit to using it. (Some other Free Software Foundation software is covered by the GNU Lesser General Public License instead.) You can apply it to your programs, too.

When we speak of free software, we are referring to freedom, not price. Our General Public Licenses are designed to make sure that you have the freedom to distribute copies of free software (and charge for this service if you wish), that you receive source code or can get it if you want it, that you can change the software or use pieces of it in new free programs; and that you know you can do these things.

To protect your rights, we need to make restrictions that forbid anyone to deny you these rights or to ask you to surrender the rights. These restrictions translate to certain responsibilities for you if you distribute copies of the software, or if you modify it.

For example, if you distribute copies of such a program, whether gratis or for a fee, you must give the recipients all the rights that you have. You must make sure that they, too, receive or can get the source code. And you must show them these terms so they know their rights.

We protect your rights with two steps: (1) copyright the software, and (2) offer you this license which gives you legal permission to copy, distribute and/or modify the software. Also, for each author's protection and ours, we want to make certain that everyone understands that there is no warranty for this free software. If the software is modified by someone else and passed on, we want its recipients to know that what they have is not the original, so that any problems introduced by others will not reflect on the original authors' reputations.

Finally, any free program is threatened constantly by software patents. We wish to avoid the danger that redistributors of a free program will individually obtain patent licenses, in effect making the program proprietary. To prevent this, we have made it clear that any patent must be licensed for everyone's free use or not licensed at all. The precise terms and conditions for copying, distribution and modification follow.

TERMS AND CONDITIONS FOR COPYING, DISTRIBUTION AND MODIFICATION

0. This License applies to any program or other work which contains a notice placed by the copyright holder saying it may be distributed under the terms of this General Public License. The 'Program', below, refers to any such program or work, and a 'work based on the Program' means either the Program or any derivative work under copyright law: that is to say, a work containing the Program or a portion of it, either verbatim or with modifications and/or translated into another language. (Hereinafter, translation is included without limitation in the term 'modification'.) Each licensee is addressed as 'you'.

Activities other than copying, distribution and modification are not covered by this License; they are outside its scope. The act of running the Program is not restricted, and the output from the Program is covered only if its contents constitute a work based on the Program (independent of having been made by running the Program). Whether that is true depends on what the Program does.

1. You may copy and distribute verbatim copies of the Program's source code as you receive it, in any medium, provided that you conspicuously and appropriately publish on each copy an appropriate copyright notice and disclaimer of warranty; keep intact all the notices that refer to this License and to the absence of any warranty; and give any other recipients of the Program a copy of this License along with the Program. You may charge a fee for the physical act of transferring a copy, and you may at your option offer warranty protection in exchange for a fee.

2. You may modify your copy or copies of the Program or any portion of it, thus forming a work based on the Program, and copy and distribute such modifications or work under the terms of Section 1 above, provided that you also meet all of these conditions:

- a) You must cause the modified files to carry prominent notices stating that you changed the files and the date of any change.
- b) You must cause any work that you distribute or publish, that in whole or in part contains or is derived from the Program or any part thereof, to be licensed as a whole at no charge to all third parties under the terms of this License.
- c) If the modified program normally reads commands interactively when run, you must cause it, when started running for such interactive use in the most ordinary

way, to print or display an announcement including an appropriate copyright notice and a notice that there is no warranty (or else, saying that you provide a warranty) and that users may redistribute the program under these conditions, and telling the user how to view a copy of this License. (Exception: if the Program itself is interactive but does not normally print such an announcement, your work based on the Program is not required to print an announcement.)

These requirements apply to the modified work as a whole. If identifiable sections of that work are not derived from the Program, and can be reasonably considered independent and separate works in themselves, then this License, and its terms, do not apply to those sections when you distribute them as separate works. But when you distribute the same sections as part of a whole which is a work based on the Program, the distribution of the whole must be on the terms of this License, whose permissions for other licensees extend to the entire whole, and thus to each and every part regardless of who wrote it. Thus, it is not the intent of this section to claim rights or contest your rights to work written entirely by you; rather, the intent is to exercise the right to control the distribution of derivative or collective works based on the Program.

In addition, mere aggregation of another work not based on the Program with the Program (or with a work based on the Program) on a volume of a storage or distribution medium does not bring the other work under the scope of this License.

3. You may copy and distribute the Program (or a work based on it, under Section 2) in object code or executable form under the terms of Sections 1 and 2 above provided that you also do one of the following:

- a) Accompany it with the complete corresponding machine-readable source code, which must be distributed under the terms of Sections 1 and 2 above on a medium customarily used for software interchange; or,
- b) Accompany it with a written offer, valid for at least three years, to give any third party, for a charge no more than your cost of physically performing source distribution, a complete machine-readable copy of the corresponding source code, to be distributed under the terms of Sections 1 and 2 above on a medium customarily used for software interchange; or,
- c) Accompany it with the information you received as to the offer to distribute corresponding source code.

(This alternative is allowed only for noncommercial distribution and only if you received the program in object code or executable form with such an offer, in accord with Subsection b above.)

The source code for a work means the preferred form of the work for making modifications to it. For an executable work, complete source code means all the source code for all modules it contains, plus any associated interface definition

files, plus the scripts used to control compilation and installation of the executable. However, as a special exception, the source code distributed need not include anything that is normally distributed (in either source or binary form) with the major components (compiler, kernel, and so on) of the operating system on which the executable runs, unless that component itself accompanies the executable. If distribution of executable or object code is made by offering access to copy from a designated place, then offering equivalent access to copy the source code from the same place counts as distribution of the source code, even though third parties are not compelled to copy the source along with the object code.

4. You may not copy, modify, sublicense, or distribute the Program except as expressly provided under this License. Any attempt otherwise to copy, modify, sublicense or distribute the Program is void, and will automatically terminate your rights under this License. However, parties who have received copies, or rights, from you under this License will not have their licenses terminated so long as such parties remain in full compliance.

5. You are not required to accept this License, since you have not signed it. However, nothing else grants you permission to modify or distribute the Program or its derivative works. These actions are prohibited by law if you do not accept this License. Therefore, by modifying or distributing the Program (or any work based on the Program), you indicate your acceptance of this License to do so, and all its terms and conditions for copying, distributing or modifying the Program or works based on it.

6. Each time you redistribute the Program (or any work based on the Program), the recipient automatically receives a license from the original licensor to copy, distribute or modify the Program subject to these terms and conditions. You may not impose any further restrictions on the recipients' exercise of the rights granted herein. You are not responsible for enforcing compliance by third parties to this License.

7. If, as a consequence of a court judgment or allegation of patent infringement or for any other reason (not limited to patent issues), conditions are imposed on you (whether by court order, agreement or otherwise) that contradict the conditions of this License, they do not excuse you from the conditions of this License. If you cannot distribute so as to satisfy simultaneously your obligations under this License and any other pertinent obligations, then as a consequence you may not distribute the Program at all. For example, if a patent license would not permit royalty-free redistribution of the Program by all those who receive copies directly or indirectly through you, then the only way you could satisfy both it and this License would be to refrain entirely from distribution of the Program.

If any portion of this section is held invalid or unenforceable under any particular circumstance, the balance of the section is intended to apply and the section as a whole is intended to apply in other circumstances. It is not the purpose of this section to induce you to infringe any patents or other property right claims or to contest validity of any such claims; this section has the sole purpose of protecting the integrity of the free software distribution system, which is implemented by public license practices. Many people have made generous contributions to the wide range of software distributed through that system in reliance on consistent application of that system; it is up to the author/donor to decide if he or she is willing to distribute software through any other system and a licensee cannot impose that choice. This section is intended to make thoroughly clear what is believed to be a consequence of the rest of this License.

8. If the distribution and/or use of the Program is restricted in certain countries either by patents or by copyrighted interfaces, the original copyright holder who places the Program under this License may add an explicit geographical distribution limitation excluding those countries, so that distribution is permitted only in or among countries not thus excluded. In such case, this License incorporates the limitation as if written in the body of this License.

9. The Free Software Foundation may publish revised and/or new versions of the General Public License from time to time. Such new versions will be similar in spirit to the present version, but may differ in detail to address new problems or concerns. Each version is given a distinguishing version number. If the Program specifies a version number of this License which applies to it and 'any later version', you have the option of following the terms and conditions either of that version or of any later version published by the Free Software Foundation. If the Program does not specify a version number of this License, you may choose any version ever published by the Free Software Foundation.

10. If you wish to incorporate parts of the Program into other free programs whose distribution conditions are different, write to the author to ask for permission. For software which is copyrighted by the Free Software Foundation, write to the Free Software Foundation; we sometimes make exceptions for this. Our decision will be guided by the two goals of preserving the free status of all derivatives of our free software and of promoting the sharing and reuse of software generally.

NO WARRANTY

11. BECAUSE THE PROGRAM IS LICENSED FREE OF CHARGE, THERE IS NO WARRANTY FOR THE PROGRAM, TO THE EXTENT PERMITTED BY APPLICABLE LAW. EXCEPT WHEN OTHERWISE STATED IN WRITING THE

COPYRIGHT HOLDERS AND/OR OTHER PARTIES PROVIDE THE PROGRAM 'AS IS' WITHOUT WARRANTY OF ANY KIND, EITHER EXPRESSED OR IMPLIED, INCLUDING, BUT NOT LIMITED TO, THE IMPLIED WARRANTIES OF MERCHANTABILITY AND FITNESS FOR A PARTICULAR PURPOSE. THE ENTIRE RISK AS TO THE QUALITY AND PERFORMANCE OF THE PROGRAM IS WITH YOU. SHOULD THE PROGRAM PROVE DEFECTIVE, YOU ASSUME THE COST OF ALL NECESSARY SERVICING, REPAIR OR CORRECTION.

12. IN NO EVENT UNLESS REQUIRED BY APPLICABLE LAW OR AGREED TO IN WRITING WILL ANY COPYRIGHT HOLDER, OR ANY OTHER PARTY WHO MAY MODIFY AND/OR REDISTRIBUTE THE PROGRAM AS PERMITTED ABOVE, BE LIABLE TO YOU FOR DAMAGES, INCLUDING ANY GENERAL, SPECIAL, INCIDENTAL OR CONSEQUENTIAL DAMAGES ARISING OUT OF THE USE OR INABILITY TO USE THE PROGRAM (INCLUDING BUT NOT LIMITED TO LOSS OF DATA OR DATA BEING RENDERED INACCURATE OR LOSSES SUSTAINED BY YOU OR THIRD PARTIES OR A FAILURE OF THE PROGRAM TO OPERATE WITH ANY OTHER PROGRAMS), EVEN IF SUCH HOLDER OR OTHER PARTY HAS BEEN ADVISED OF THE POSSIBILITY OF SUCH DAMAGES.

END OF TERMS AND CONDITIONS