

Features

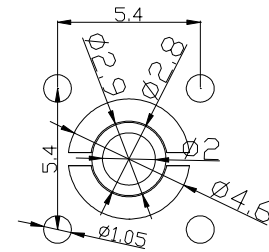
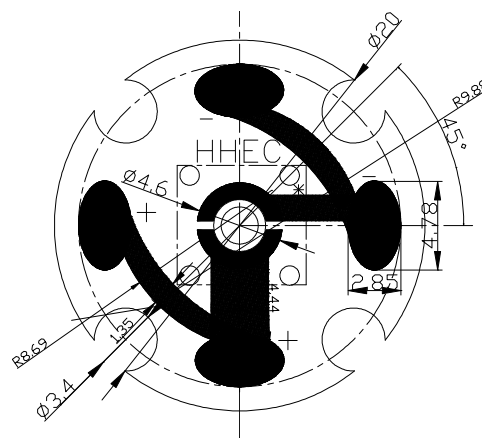
- High Flux Output
- Very long operating life
- More Energy Efficient than Incandescent and most Halogen lamps
- Low voltage DC operated
- No UV
- Caution to electrostatic damage.

Product Specification

3W / Blue

Typical Applications

- Portable flashlight
- Automotive Applications
- Muminations
- Indicators
- Back Lights



Absolute Maximum Ratings

(Ta=25°C)

Item	Symbol	Absolute maximum Rating	Unit
DC Forward Current *	IF	700	mA
Peak Pulse Forward Current	IFP	800	mA
Reverse Voltage	VR	5	V
LED Junction Temperature	TJ	120	°C
Power Dissipation	Pd	2.6	W
Operating Temperature Range	Topr	-20~+85	°C
Storage Temperature Range	Tstr	-25~+100	°C

*Pulse width Max.10ms Duty ratio Max.1/10

Electrical-Optical Characteristics

Item	Symbol	Condition	Min.	Typ.	Max.	Unit
DC Forward Voltage	VF	IF=600 mA	-	3.7	4.5	V
Luminous Flux	ΦV	IF=600 mA	55	58	-	lm
Reverse Current	IR	VR=5 V	-	-	50	μA
Viewing Angle	$2\theta_{1/2}$	IF=600 mA	-	120	-	Deg.
Peak Emission Wavelength	λ_p	IF=600 mA	-	470	-	NM

Remarks : 1. All of the products are sensitive to static voltage. It is recommended that antistatic facilities like wrist band or antistatic gloves are used when handling the products.

2. It is absolutely necessary to cool them by any device.

3. Need to add to spread a hot machine while installing power LED

