

BOLD

Safety Instructions

1, 2, 3, 4, 6, 8, 9, 10, 12, 13, 14, 15, 16, 17



Info

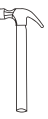
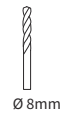
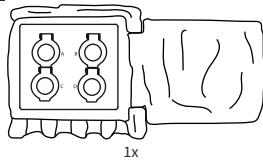
www.Die-Bold.com

Die BOLD GmbH
Auf dem Liethberge 26
38690 Goslar-Germany

www.Die-Bold.com

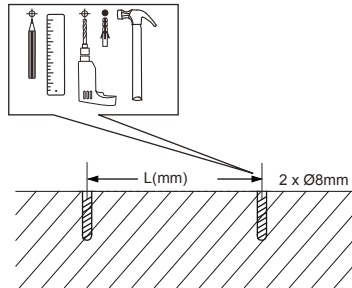
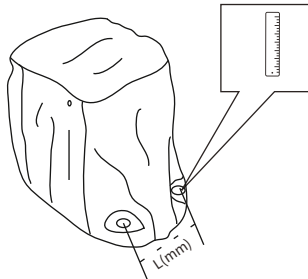
Art.-Nr.: 10338

230V~/16A, 50Hz, IP44
max.total wattage: 3680W
(+MA 230) BVD 06/20



Not included

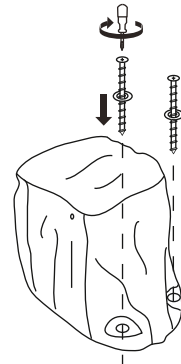
A1



Safety
Instructions
Nr. 3



B1

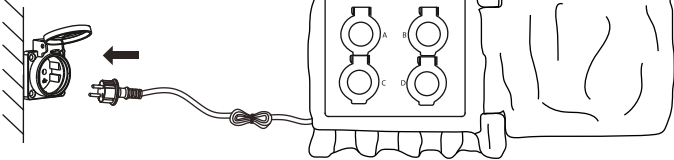


Only suitable for
application Vertically.

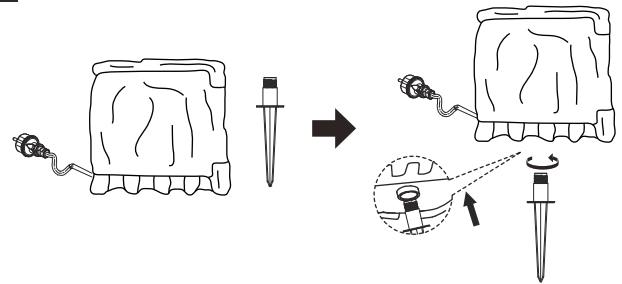
C1



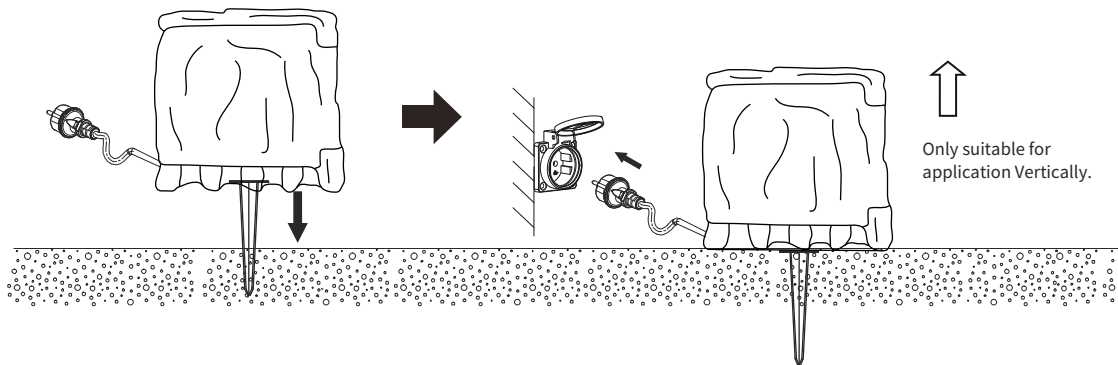
IPX4 socket



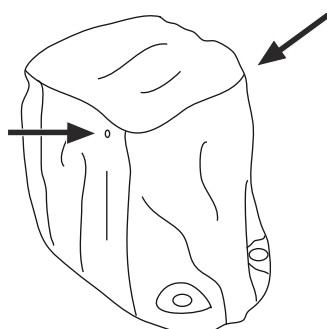
A2



B2



Only suitable for
application Vertically.



Beachtung! Die beiden Löcher oben an der Gartensteckdose sind Sicherheitsentwässerungslöcher. Sie sind notwendig und nicht beschädigt. Bitte blockieren Sie sie nicht während des Gebrauchs.
Attention! The two holes on the top of the garden socket are safety drainage holes. They are necessary and are not damaged, please do not block them during using.