



## 50-Port-Fast Ethernet-Switch, 2 x Gigabit SFP/RJ45 Combo

Fast connections and fiber distances FGU-5021 is a 48-port Fast Ethernet Switch (10/100 Mbps) that gives you a

Plug and Play, Flexible and Easy GSW-5150 is plug-and-play so no configuration is required. Providing auto MDI/MDI-X cable detection on all ports eliminates the need for crossover cables or Uplink ports. Each port can be used as general ports or Uplink ports, and any port can be simply plugged into a server, a hub, a router or a switch, using a straight cable or crossover cable. Diagnostic LEDs which display link status and activity, allowing you to quickly detect and correct problems on the network.

### Key-features

- 10/100 Mb/s, Voll/Halb-Duplex, Auto-Negotiation, Auto-MDI/MDIX
- 9K Jumbo-Frames für hohe Transferraten
- Unterstützt Auto-Learning und Auto-Aging für bis zu 8K MAC-Adressen
- 19" Metallgehäuse
- Schnelle, einfache Installation

### Specifications

#### System Specifications

##### Standards & Protocols:

IEEE802.3(10BASE-T)

IEEE802.3u(100BASE-T)

IEEE802.3az Energy Efficient Ethernet

##### Memory:

16Mbit

##### Pufferspeicher:

4Mbit

##### Connectors and Cabling:

48 x 10/100BASE-TX RJ45 ports

2 x 100/1000/1000Base-X SFP Slots

2 x 100/1000/1000Base-T RJ45 ports

##### Indikator:

Power, LINK/ACT, 1000M



**Transmission Method:**

Store- forward

**Power Input:**

100-240V/AC?50-60Hz

**Power Consumption:**

28.6W

### Performance

**Backplane (Gbps):**

13.6Gbps

**MAC-Adresstabelle:**

8K

**Weiterleitungsrate:**

148800pps

**Jumbo-Frames:**

9KB

### Environment

**Energieeffizienz:**

Yes

**Temperatur (°C):**

Operating: 0°C ~ 40°C

Storage: -40°C ~ 70°C

**Luftfeuchtigkeit (nicht kondensierend ):**

Operate:10-90% non-condensing

Storage:5-90% non-condensing

### Physical Specifications

**Abmessungen (W x D x H mm):**

440\*230\*44

**Gewicht:**

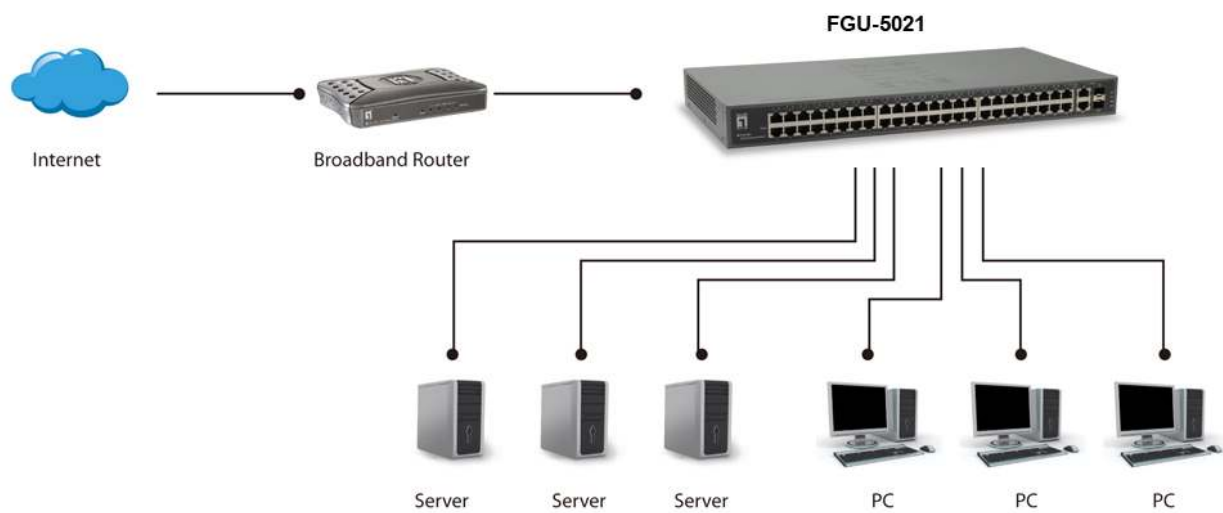
3.03

### Approval and Compliance

**Zertifizierung:**

CE/FCC

## Diagramm



---

## Order Information

FGU-5021

---

## Package Contents

FGU-5021  
Stromkabel  
19" Einbaurahmen  
Quick Installation Guide

No liability or responsibility for any errors or omissions in the content.  
Specifications are subject to change without notice.  
All mentioned brand names are registered trademarks and property of their owners.  
Copyright © Digital Data Communications GmbH, Germany. All Rights Reserved.