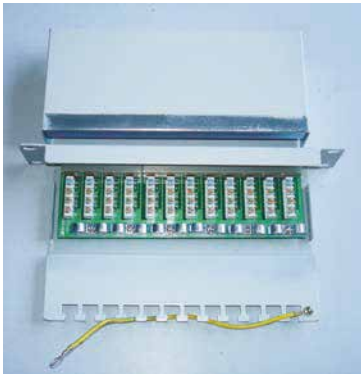


Montageanleitung für geschirmte 24Port Patch Panels

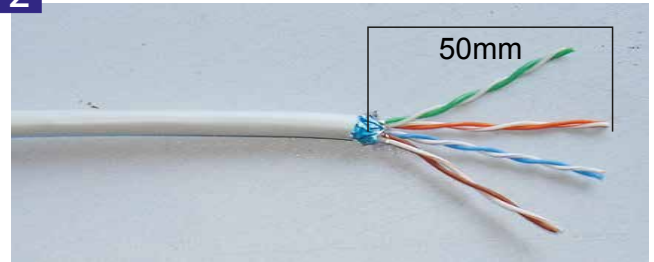
Full shielded patch panel installation instruction

1



Abdeckung demontieren
 Open the cover.

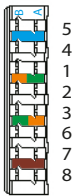
2



Kabelmantel abisolieren, Schirmung umschlagen und Adernpaare vorbereiten
 Strip approximately 50mm from the cable jacket, fold back the foil or braid shield and prepare each pair.

3

IDC(KRONE)



T568A

- Pin 5 White/Blue
- Pin 4 Blue
- Pin 1 White/Green
- Pin 2 Green
- Pin 3 White/Orange
- Pin 6 Orange
- Pin 7 White/Brown
- Pin 8 Brown

T568B

- Pin 5 White/Blue
- Pin 4 Blue
- Pin 1 White/Orange
- Pin 2 Orange
- Pin 3 White/Green
- Pin 6 Green
- Pin 7 White/Brown
- Pin 8 Brown

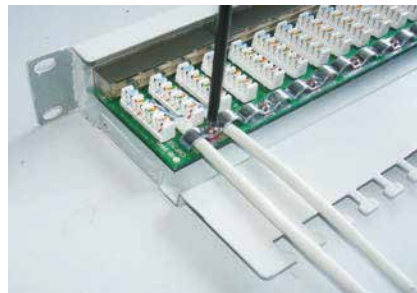
Farbcode wählen und Adernpaare in die LSA-Kontakte legen
 Follow the direction on the color-coding sticker for T568A or T568B wiring and set pairs into proper position.

4



LSA-Kontakte mit Einlegewerkzeug auflegen
 Punch down wires with LSA-tool.

5



Kabelschirm unter die Klemmen legen und handfest anziehen
 Fasten the screws through metal case to hold tightly down for two cable jackets in the same time.

6



Installierte Kabel mit Kabelbindern zugentlasten
 Fasten cable ties for additional strain relief.

Kabelbinder
 Cable tie