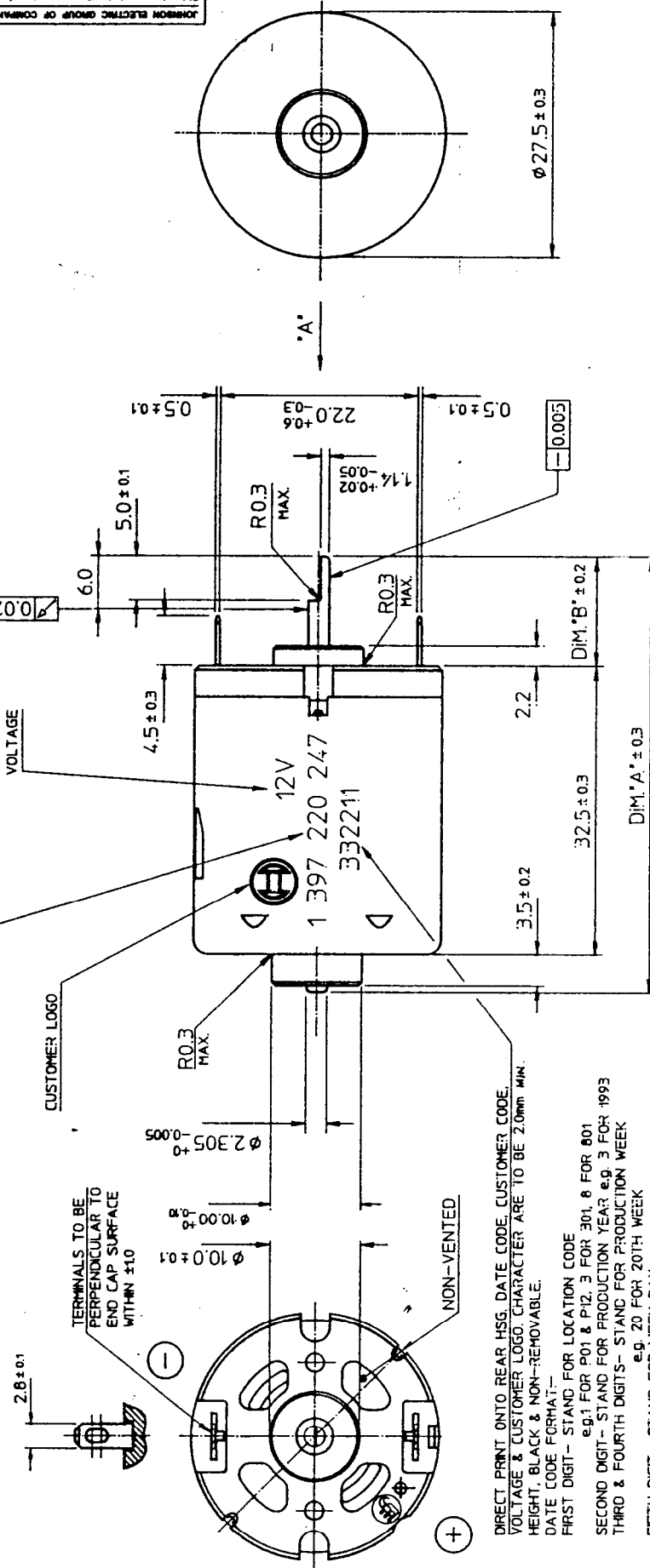


ROTATION



DIRECT PRINT ONTO REAR HSG. DATE CODE, CUSTOMER CODE, VOLTAGE & CUSTOMER LOGO CHARACTER ARE TO BE 2.0mm MIN. HEIGHT, BLACK & NON-REMOVABLE.

DATE CODE FORMAT:-

FIRST DIGIT- STAND FOR LOCATION CODE
 e.g. 1 FOR P01 & P12, 3 FOR 301, 8 FOR 801

SECOND DIGIT- STAND FOR PRODUCTION YEAR e.g. 3 FOR 1993

THIRD & FOURTH DIGITS- STAND FOR PRODUCTION WEEK
 e.g. 20 FOR 20TH WEEK

FIFTH DIGIT- STAND FOR WEEK DAY
 e.g. 1 FOR MONDAY, 2 FOR TUESDAY, 3 FOR WEDNESDAY,
 4 FOR THURSDAY, 5 FOR FRIDAY, 6 FOR SATURDAY.

NOTES:-

1. LENGTH OF SHAFT, DIM. 'A' 49.0 mm.
2. REAR EXTENSION, DIM. 'B' 12.25 mm., MEASURED WITH A LOAD OF 1 N (102 GMS) APPLIED IN DIRECTION 'A'.
3. DIRECTION OF ROTATION : CLOCKWISE WHEN VIEWING MOTOR OUTPUT END WITH POSITIVE VOLTAGE APPLIED TO POSITIVE TERMINAL.
4. END PLAY : 0.50 mm. MAX.

This document is the property of Johnson Electric and the information herein contained is confidential. Unauthorized reproduction or other use thereof, whether directly or indirectly, in whole or in part, is strictly prohibited. All products made or derived directly or indirectly from this document are proprietary to Johnson Electric. Copyright Johnson Electric S.A. 1988. All rights reserved.

B	CARBON BRUSH CHANGED	BY	DATE
A2	THE INDENT MARK & THE POSITIVE TERM. TO BE CORRECTED TO THE OPPOSITE SIDE OF THE MAGNET WING.	BY	DATE
ALT. REF.	DESCRIPTION	BY	DATE
MATERIAL	FINISH	BY	DATE
TOLERANCES:		A3	
1 DEC. PLACE ± 0.5			
2 DEC. PLACES \pm			
3 DEC. PLACES \pm			
ANGULAR $\pm 2'$			
TITLE			
SCALE 2:1		DATE	
DWN. BY HONG		23/7/93	
CHK. BY			
APP. BY			
DWG. NO.		33340-99900 B	

MOTOR OUTLINE

HC 310

JOHNSON ELECTRIC ENGINEERING LTD.
 & Johnson Electric Group company
 JOHNSON BUILDING, CHAI WAN, HONG KONG.

ALL DIMENSIONS ARE IN MILLIMETRES

DO NOT SCALE DRAWING