

LogiLink®

WL0243

Ultra Fast 1200Mbps 11ac Dual Band Wireless Adapter



User Manual | EN



According to the European WEEE directive, electrical and electronic equipment must not be disposed with consumers waste. Its components must be recycled or disposed apart from each other. Otherwise contaminative and hazardous substances can pollute our environment. You as a consumer are committed by law to dispose electrical and electronic devices to the producer, the dealer, or public collecting points at the end of the devices lifetime for free. Particulars are regulated in national right. The symbol on the product, in the user's manual, or at the packaging alludes to these terms. With this kind of waste separation, application, and waste disposal of used devices you achieve an important share to environmental protection.

Chapter 1: Introduction	2
1.1 Specification	2
1.2 Package Contents	2
 Chapter 2: Installation	 3
2.1 Driver Installation	3
2.2 Connect to Wireless Access Point	4
2.2.1 Using Client Utility	4
 Chapter 3: Client Utility	 8
3.1 Establish secure connection with AP by WPS	8
3.1.1 PIN Code	9
3.1.2 Push Button	10
 Chapter 4: Troubleshooting	 10



Chapter 1: Introduction

Thank you for purchasing WL0243! This adapter has compact size design; complies with IEEE802.11 ac/a/b/g/n standards, and Operates simultaneously over 2.4GHz and 5GHz band. Compatible with Windows/Linux/Mac OS.

1.1 Specification

Chipset Solution	Realtek 8812BU
Standard	IEEE802.11 ac/a/b/g/n
Interface Type	USB3.0
Frequency Range	2.4-2.4835GHz/5.15-8.825GHz
Wireless Signal Rates With Automatic Fallback	11ac: Up to 867Mbps(Dynamic) 11n: Up to 300Mbps (Dynamic) 11g: Up to 54Mbps (Dynamic) 11b: Up to 11Mbps (Dynamic)
Wireless Transmit Power	20dBm (EIRP)
Modulation Type	DBPSK,DQPSK,CCK, OFDM
Receiver Sensitivity	867M:-53dBm@10%PER 300M: -68dBm@10% PER 54M: -72dBm@10% PER 11M: -85dBm@8% PER
Work Mode	Ad-Hoc Infrastructure
Wireless Security	WPS, 64/128bit WEP, WPA/WPA2, WPA-PSK WPA2-PSK(TKIP/AES)
Supported OS	Windows Vista/7/8/8.1/10, Linux, MAC OS
Antenna Type	Internal PIFA Antenna
Antenna Gain	2dBi
Dimensions	37.5 x 16.5 x 7.3mm
Weight	10g
Temperature	Operating Temperature: 0°C~40°C Storage Temperature: 0°C~60°C
Humidity	Relative Humidity: 10%~90% non-condensing Storage Humidity: 5%~95% non-condensing

1.2 Package Contents

- 1 x WLAN 802.11ac USB Adapter
- 1 x CD
- 1 x Quick Installation Guide

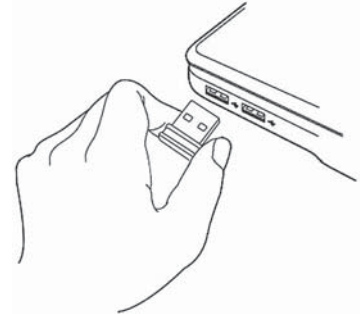
Chapter 2: Installation

This chapter is to assist you how to use the CD-ROM provided which comprises the Driver and the Client Utility Interface.

2.1 Driver Installation

Please follow the following instructions to install your new wireless USB Adapter:

- 1 Insert the USB adapter into an empty USB 3.0 port of your computer when computer is switched on. Never use force to insert the card, if you feel it's stuck, flip the adapter over and try again.



- 2 The following message will appear on your computer, click **Cancel / Close**.



- 3 Insert the driver CD into your CD-ROM. You can see autorun screen below. if not, you can double click "autorun.exe" on CD.

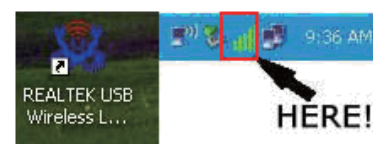
Click **Driver Installation**.



- 4 Please follow the installation instructions. Once the installation has completed the computer will be asked to reboot. Please click **Finish** and reboot the computer to finish the installation of driver files.

- 5 A new icon will appear near the clock of system tray:

Left-click the icon will launch wireless network configuration utility, and you can right-click the icon to show the quick menu of configuration utility. This icon also uses different color to show the status of wireless connection:



Wireless connection is established, good signal reception.



Wireless connection is established, weak signal reception.



Connection is not established yet.



Wireless adapter is not detected.

For detailed instructions of wireless network configuration utility, please see next chapter.

2.2 Connect to Wireless Access Point

To use wireless network, you have to connect to a wireless access point first. You can either use Client utility (comes with network adapter driver), or Windows Zero Config utility (comes with Windows operating system).

2.2.1 Using Client Utility

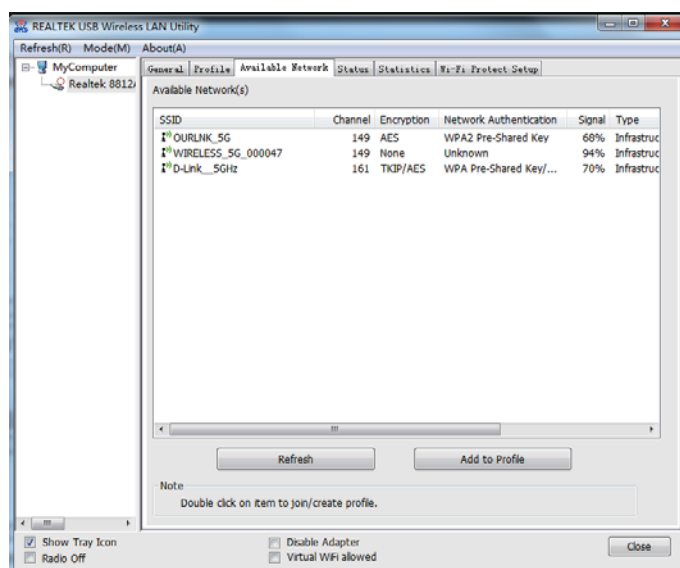
Please follow the following instructions to use Client configuration utility to connect to wireless access point.

- 1 Left-click the Client configuration utility icon located at lower-right corner of computer desktop, and configuration menu will appear:

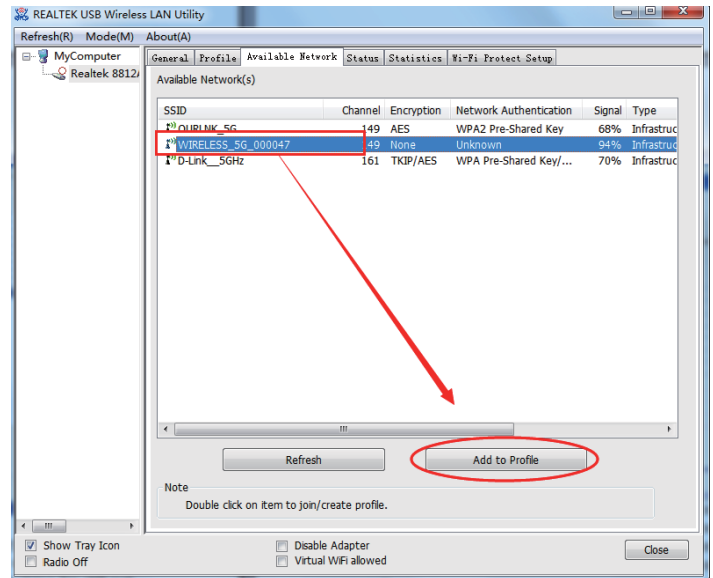


Here!

- 2 Wireless utility will appear. Click **Available Network** menu to search for wireless access points nearby.



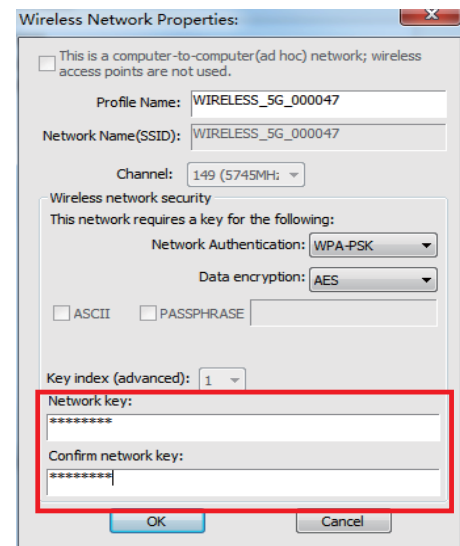
- 3 Please wait for a while, and all wireless access points which can be reached by this wireless network card will be displayed here.



If the wireless access point you wish to connect does not appear here, you can click **Refresh** button to scan for wireless access points again; if the wireless access point you're looking for still not appear, try to move the computer closer.

When the access point you're looking for is on the list, left-click it and then double click it or click **Add to Profile**.

- 4 If a password (a.k.a. **Network Key**) is required to access the wireless access point, please input it in **Network key** (and input it again in **Confirm network key** for confirmation). Click **OK** when password is properly input.



- ! Network security type (**Network Authentication** and **Data encryption**) will be selected automatically based on wireless access point's security setting. It's not required to change these settings by yourself.

All options in this page will be filled automatically according to the access point you wish to add to profile. However, you can still modify any of them to meet your requirement.

Profile Name	You can give a name to this profile, so you can remember its purpose easily. It can be any phrase to help you remember.
--------------	---

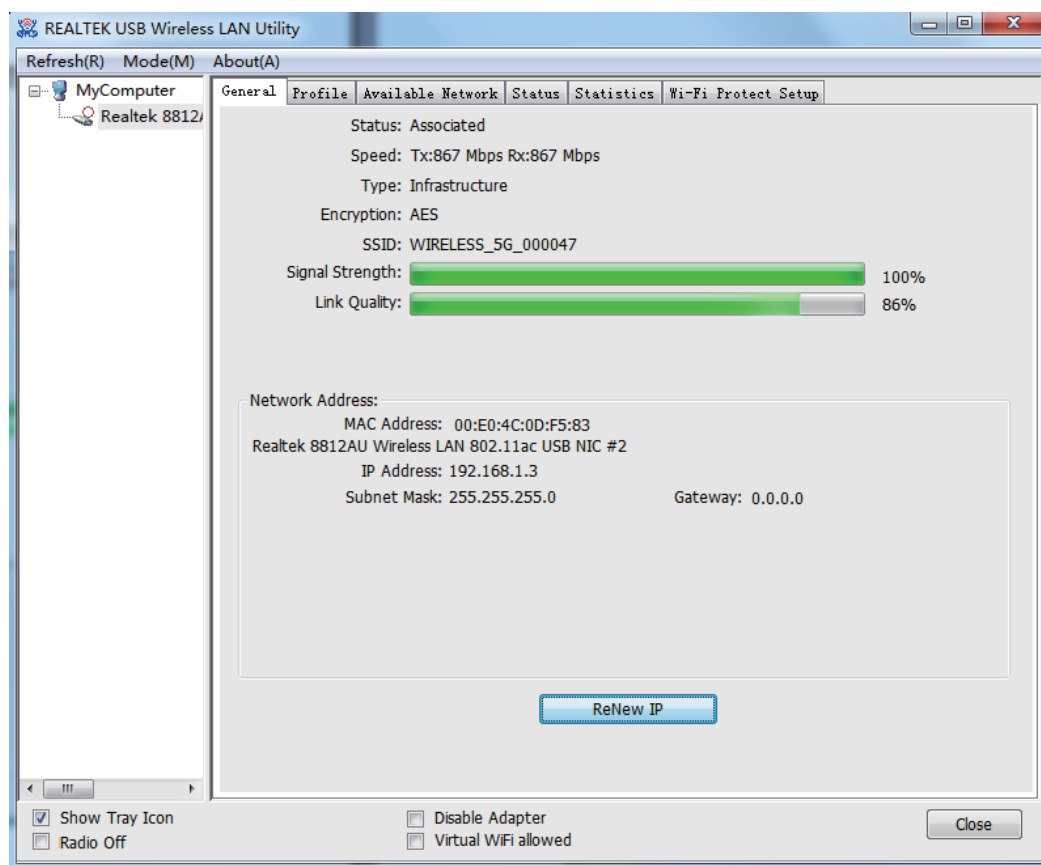
Network Name (SSID)	The SSID (Service Set Identifier, i.e. access point's name). This field will be filled as the access point you selected when SSID is not hidden and grayed out. If SSID is hidden, you have to input correct SSID yourself.
This is a computer-to-computer (ad hoc) network	Check this box if you wish to connect to another computer / network device by ad hoc method. When not accessing to wireless access point, you have to check this box.
Channel	Select wireless channel for ad hoc connection. This option only appears when you're using ad hoc connection.
Network Authentication	Select the network authentication type from drop-down menu. This setting must be identical with the setting of wireless access point you set to connect.
Data Encryption	Select the data encryption type from drop-down menu. This setting must be identical with the setting of wireless access point you set to connect.
ASCII / PASSPHRASE	When the encryption type is WEP , it's required to input a set of passphrase to connect to wireless access point. Check ASCII or PASSPHRASE depending on the security setting of the access point, and input it in the box; if you select PASSPHRASE you also need to select the length of the key. The passphrase must be identical with the setting of wireless access point you set to connect.
Key Index	Select WEP key index. For most of the access points you can select 1 , but please refer to the setting of the access point.
Network key / Confirm network key	When the encryption type is WPA or WPA2-PSK , it's required to input a set of passphrase to connect to wireless access point. Please input the same passphrase in two boxes for confirmation.

EAP TYPE / Tunnel / Provision Mode	When authentication type is any of 802.1X, you have to select EAP type, tunnel, and provision mode from dropdown menu. This setting must be identical with your 802.1x authentication server.
Username / Identity / Domain / Password	Please input 802.1x related authentication information here.
Certificate	If certification is required to authenticate with 802.1x authentication server, please select a local certificate from dropdown list.
PAC	Check this box and PAC (Privilege Access Certificate) will be automatically selected.

Please click **OK** when ready.

- 5 Network adapter will attempt to connect to access point now, this may require few seconds to minutes, please be patient. When the **Status** become **Associated** , your computer is connected to access point you selected. Click **Close** to close configuration menu.

- ❗ If you connected to an access point but the connection has been dropped soon, please check security settings and re-check password spelling.



3.1 Establish secure connection with AP by WPS

Wi-Fi Protected Setup (WPS) is the latest wireless network technology which makes wireless network setup become very simple. If you have WPS-enabled wireless access point, and you want to establish a secure connection to it, you don't have to configure the wireless access point and setup data encryption by yourself. All you have to do is to go to the WPS setup page of this wireless adapter, click a button, and then press a specific button or enter a set of 8-digit code on the wireless access point you wish to establish a secure connection - just three simple steps!

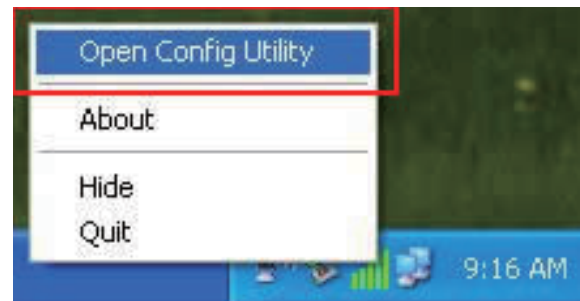
For older wireless access points, it's possible to perform a firmware upgrade to become a WPS-enabled access point. Since they may not have a hardware button to press for WPS setup, you can use an alternative WPS setup method - input the pin code. Every WPS-compatible wireless network card support pin code configuration method; you can just input the code to wireless access point, and the wireless access point and wireless network card will do the rest for you.

This wireless network card is compatible with WPS. To use this function, the wireless access point you wish to connect to must support WPS function too. Now, please follow the following instructions to establish secure connection between WPS-enabled wireless access point and your wireless adapter.

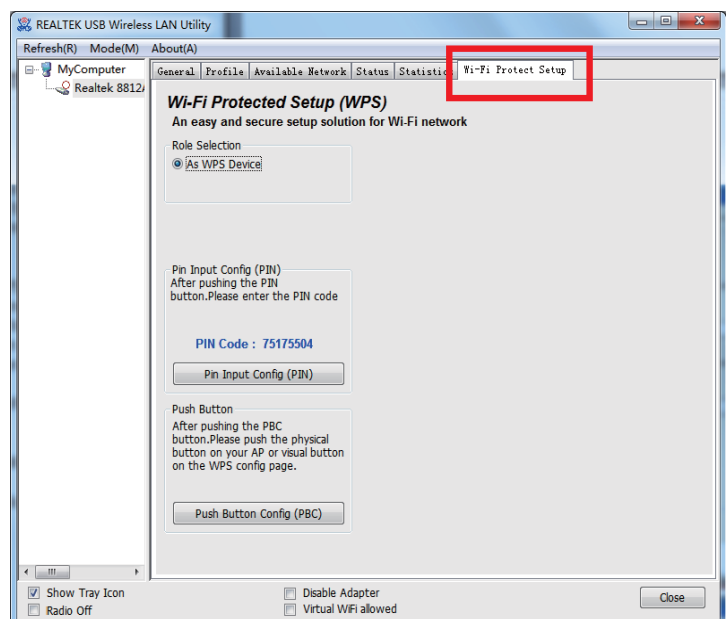
This wireless network card supports 2 kinds of WPS: PIN code and Push-Button.

Please follow the following instructions to setup WPS:

- 1 Right-click Client configuration utility icon, and click **Open Config Utility**.



- 2 Click **Wi-Fi Protect Setup** menu.

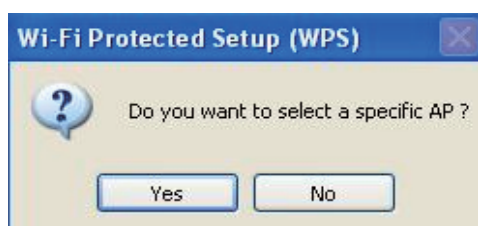


- 3 You can use PIN code or Push-Button configuration, and WPS-compatible wireless access point must use the same type of WPS. For instructions on setup each type of WPS, see next 2 chapters for detailed instructions.

3.1.1 PIN Code

To use PIN Code, please click **Pin Input Config (PIN)** button:

You'll be prompted to select an access point you wish to connect. If you know its SSID, click **Yes**, otherwise click **No**.

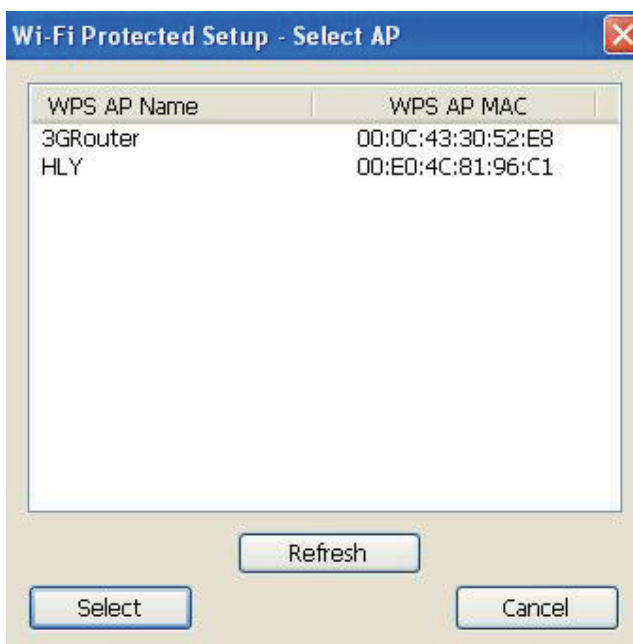
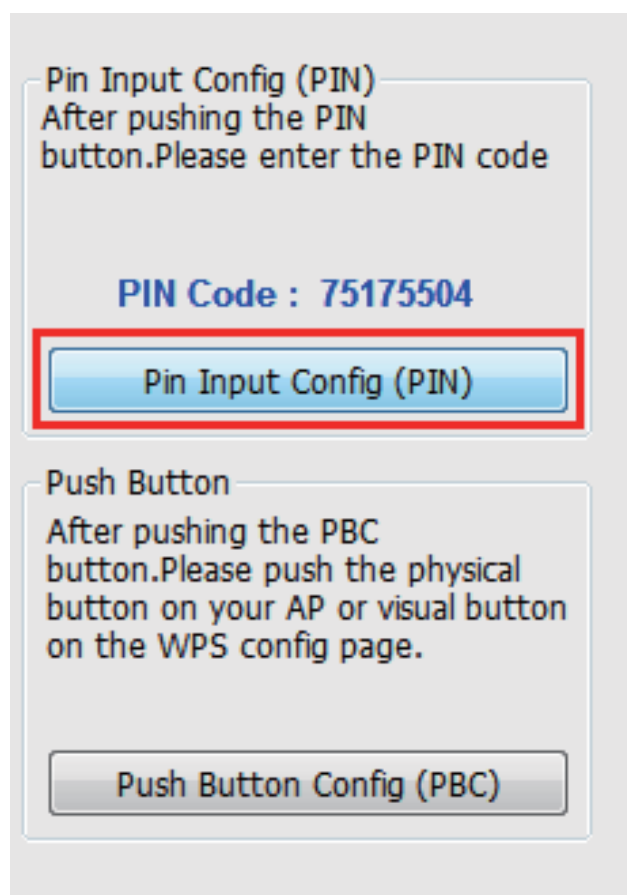


If you select **Yes**, a list of all WPS-compatible AP nearby will be displayed; you can click **Refresh** to rescan, then select an AP and click **Select** button.

If you select **No**, wireless network adapter will prompt you to enter 8-digit PIN code into your AP, without selecting an AP in advance.

After you select **Yes** or **No** in previous step, network adapter will attempt to connect to WPS-compatible AP, and an 8-digit number will appear. Please input this number to AP's configuration menu within 2 minutes, and network adapter will establish secure connection with AP automatically.

To stop this procedure before connection is established, click **Cancel**.

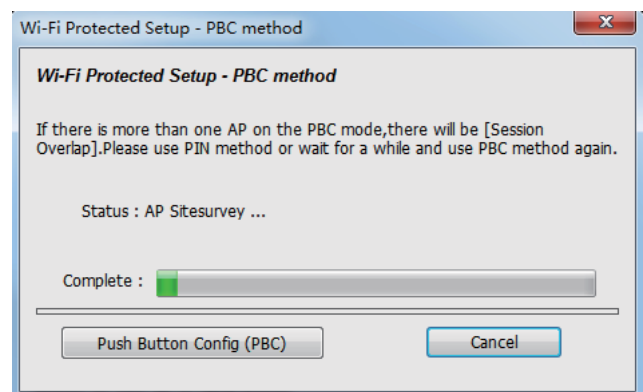
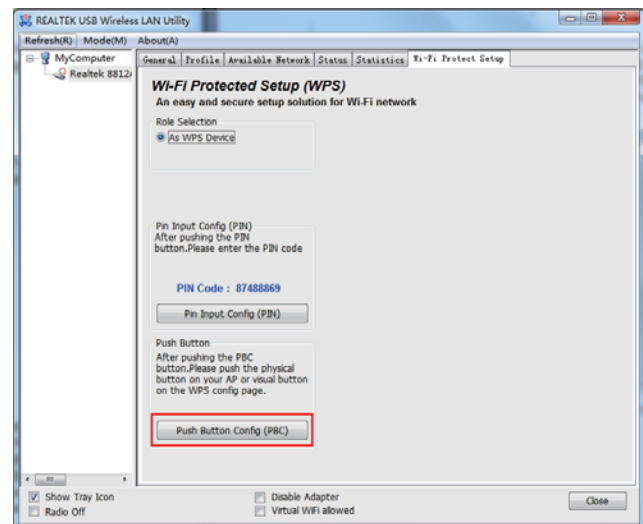


3.1.2 Push Button

To use Push-Button WPS configuration, please click **Push Button Config (PBC)** button. This is the easiest way to establish secure connection by WPS, but if there're more than one WPS-compatible AP using Push-Button config, please use PIN Code instead.

After you click **Push Button Config (PBC)**, a message box will appear:

Please activate Push-Button function on wireless access point now, and wireless network card will establish secure connection with access point within one minute.



CHAPTER 4: Troubleshooting

If you encounter any problem when you're using this wireless network adapter, don't panic! Before you call your dealer of purchase for help, please check this troubleshooting table, the solution of your problem could be very simple, and you can solve the problem by yourself !

Scenario	Solution
I can't find any wireless access point / wireless device in Site Survey function.	<ol style="list-style-type: none">1. Click Rescan for few more times and see if you can find any wireless access point or wireless device.2. Please move closer to any known wireless access point.3. Ad hoc' function must be enabled for the wireless device you wish to establish a direct wireless link.4. Please adjust the position of network adapter (you may have to move your computer if you're using a notebook computer) and click Rescan button for few more times. If you can find the wireless access point or wireless device you want to connect by doing this, try to move closer to the place where the wireless access point or wireless device is located.

Scenario	Solution
Nothing happens when I click Open Config Utility	<ol style="list-style-type: none"> 1. Please make sure the wireless network adapter is inserted into your computer's USB port. 2. Reboot the computer and try again. 3. Remove the adapter and insert it into another USB port. 4. Remove the driver and re-install. 5. Contact the dealer of purchase for help.
I can not establish connection with a certain wireless access point	<ol style="list-style-type: none"> 1. Click Add to Profile for few more times. 2. If the SSID of access point you wish to connect is hidden (nothing displayed in SSID field in Site Survey function), you have to input correct SSID of the access point you wish to connect. Please contact the owner of access point to ask for correct SSID. 3. You have to input correct passphrase / security key to connect an access point with encryption. Please contact the owner of access point to ask for correct passphrase / security key. 4. The access point you wish to connect only allows network cards with specific MAC address to establish connection. Please go to Status menu and write the value of MAC Address down, then present this value to the owner of access point so he / she can add the MAC address of your network adapter to his / her access point's list.
The network is slow / having problem when transferring large files	<ol style="list-style-type: none"> 1. Move closer to the place where access point is located. 2. There could be too much people using the same radio channel. Ask the owner of the access point to change the channel number. <p>Please try one or more solutions listed above.</p>

The software used by this device underlies the GNU-GPL (General Public License) You can find further information at www.2direct.de/gpl.htm



Hereby, the company 2direct GmbH declares that the Ultra Fast 1200Mbps 11ac Dual Band Wireless Adapter type WL0243 is in compliance with the essential requirements and other relevant regulations of Directives 2014/53/EU and 2014/30/EU. The complete Declaration of Conformity can be found at <http://www.2direct.de>