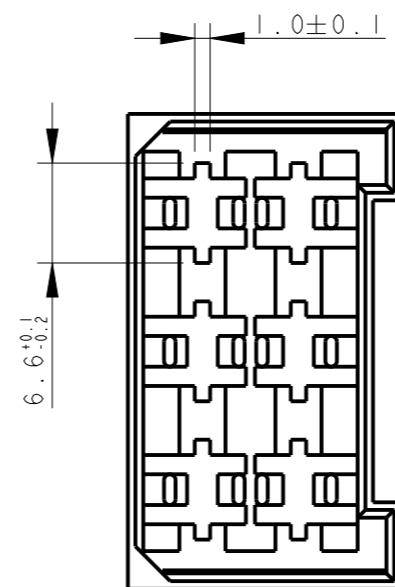
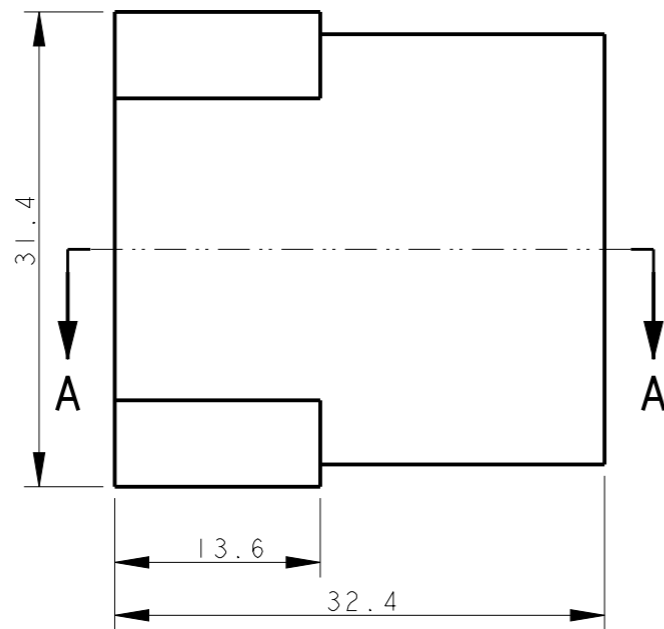
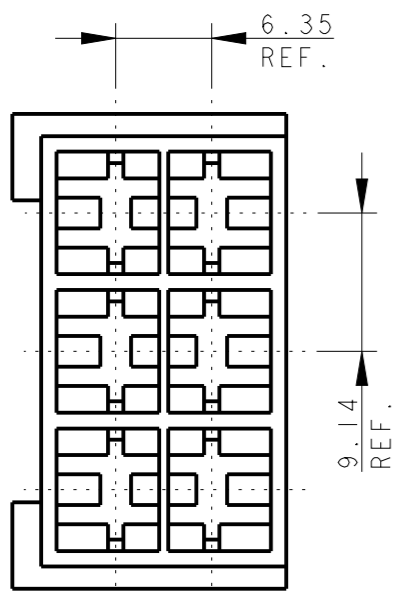
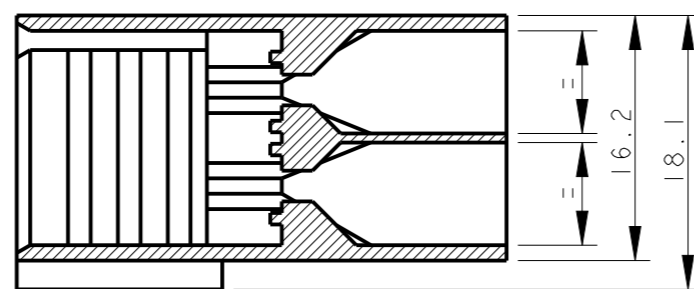


LOC	DIST
IR	-

REVISIONS					
P	LTR	DESCRIPTION	DATE	DWN	APVD
	AL1	REVISED PER ECO-09-026346	26NOV09	KK	AEG
	AL2	ECR-10-022530	14JUN11	KK	HMR
	AL3	PN 2-180906-0 RE-ACTIVATED	05MAR2012	PKS	RRP
	AL4	REVISED PER ECR-21-101990	19APR2021	SS	EW

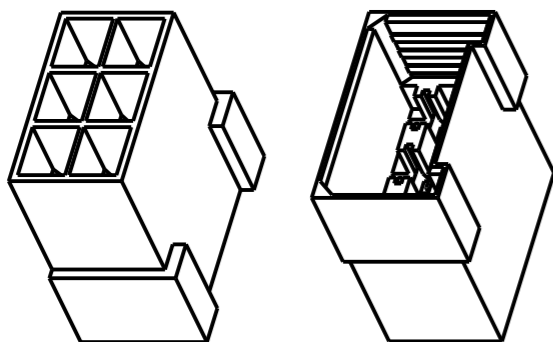


SECTION A - A



- ① PA 6.6 UNFILLED, UL 94-V2
- ② PA 6.6 UNFILLED UL 94 V0 & ACCORDING TO IEC 60335-1 NORM.
- ③ PA 6.6 20% GLASS FIBER FILLED, TECHNYL A 216 V20.
- ④ OBSOLETE PARTS: OBSOLETE CIS STREAMLINING PER D.RENAUD/D.SINISI
- 5 INTERNAL FLASH INSIDE CAVITY (THIN AND FLEXIBLE THAT DO NOT COME OFF) ACCEPTABLE UP TO 0.15 mm. EXTERNAL FLASH ACCEPTABLE UP TO 0.4 mm

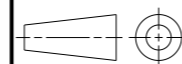
NOTE	COLOUR	MATERIAL	TE P/N	REV
④ OBSOLETE	NATURAL	①	<del>4-180906-0</del>	AK
	NATURAL	③	3-180906-0	AK
	NATURAL	②	2-180906-0	AL
④ OBSOLETE	ORANGE		<del>0-180906-9</del>	AK
	VIOLET		<del>0-180906-8</del>	AK
	BROWN		<del>0-180906-6</del>	AK
	BLACK		0-180906-5	AK
④ OBSOLETE	YELLOW	①	<del>0-180906-4</del>	AK
	BLUE		0-180906-3	AK
	GREEN		0-180906-2	AK
	RED		0-180906-1	AK
	NATURAL		0-180906-0	AK



SCALE 1:1

THIS DRAWING IS A CONTROLLED DOCUMENT.

DIMENSIONS: mm



TOLERANCES UNLESS OTHERWISE SPECIFIED:

0 PLC	±0.3
1 PLC	±0.3
2 PLC	±0.3
3 PLC	±0.3
4 PLC	±0.3
ANGLES	±2°
FINISH	-

MATERIAL SEE TABLE

DWN H. YAALI 18APR2006

CHK H. YAALI

APVD G. TURCO

PRODUCT SPEC 108-20020

APPLICATION SPEC -

WEIGHT -

CUSTOMER DRAWING



NAME  
**FASTIN-FASTON Connector, 6.3 mm series TAB HOUSING 6 WAY**

SIZE	CAGE CODE	DRAWING NO	RESTRICTED TO
A3	-	C-180906	

SCALE 2:1 SHEET 1 OF 1 REV AL4