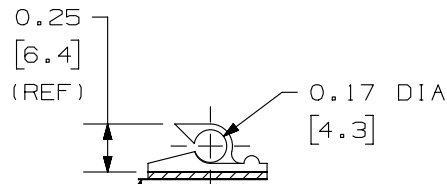
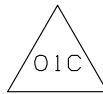
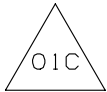
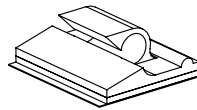
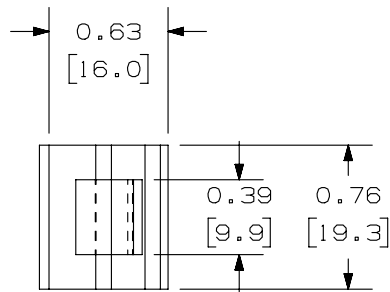


THIS COPY IS PROVIDED ON A RESTRICTED BASIS AND IS NOT TO BE USED IN ANY WAY DETRIMENTAL TO THE INTERESTS OF PANDUIT CORP.

NO WARRANTY, EXPRESSED OR IMPLIED, IS MADE BY PANDUIT WITH RESPECT TO ADHESIVE BOND PERFORMANCE. AMONG OTHER THINGS, THE CONDITIONS UNDER WHICH THESE MOUNTS MAY BE APPLIED, AND/OR THE SURFACE TO WHICH THEY MAY BE APPLIED, ARE BEYOND PANDUIT'S CONTROL.



TEAR-TAB



ADHESIVE BACKING: PRESSURE SENSITIVE FOAM TAPE, .04(1.0) THICK, WITH RUBBER (-A) ACRYLIC (-AT) OR HIGH BOND ACRYLIC (-AV) ADHESIVE AND PROTECTIVE LINER. LINER TO EXTEND BEYOND EDGE TO FORM TEAR-TAB. MOUNT IS DESIGNED TO SUPPORT .20 lbs. (91g) MAX. WEIGHT ON A CLEAN, DRY, SMOOTH SURFACE.

PANDUIT PART NUMBER*	MAXIMUM CABLE DIA. in. (mm)	WEIGHT lbs. (g)/100pcs
ACC19-A	.19 (4.8)	.17 (77)
ACC19-AT	.19 (4.8)	.17 (77)
ACC19-AV	.19 (4.8)	.17 (77)

- TO APPLY ADHESIVE CORD CLIP:
1. REMOVE PROTECTIVE LINER
  2. PLACE IN DESIRED LOCATION
  3. APPLY PRESSURE TO TOP OF CORD CLIP

NOTES:

- \* 1) SEE CURRENT PRICE SHEET FOR PART NUMBER SUFFIX DESIGNATION FOR PACKAGE SIZE AND PART COLOR.

REV	DATE	BY	CHK	APR	DESCRIPTION	ECN	TITLE ADHESIVE CORD CLIP ACC19-A , ACC19-AT , ACC19-AV CUSTOMER DRAWING					
01C	2/26/15	RVU	CLW	JHAC	SHOW THE TEAR TABS IN THE CORRECT LOCATION.	GAECN02632	ITEM REVISION NAME G03597BC/01				<b>PANDUIT</b>	
00B	11/6/09	TMSA			ADDED PART NUMBER ACC19-AV. REVISED TO TEAMCENTER NAMING CONVENTION.	GB0239GG	DATASET FILE NAME G03597BC_DC_GB0239GG/01C					
2	6/5/03	MSAD			MODIFIED BASE LENGTH AND WIDTH DIMENSIONS.	GB0239GG	UNLESS OTHERWISE SPECIFIED, DIMENSIONAL TOLERANCES ARE: IN [ mm ] .x ± N/A .xxx ± N/A .xx ± .02 [ .5 ] ANGLES ± 5 °				MATERIAL: NYLON 6/6	
1	7/15/99	CGSM			REPLACED ISO VIEW	GB0239GG	THIRD ANGLE PROJECTION				DRAWING NUMBER: GB0239GG	
R	2/23/99	CGSM			RE-DRAWN FROM DWG SS-7173	GB0239GG	DRAWN BY CGSM	DATE 2/23/99	CHK JHAC	SCALE FULL	SHT 1 OF 1	SIZE A