

Anker SOLIX PS100 Portable Solar Panel

Lighter. Smarter. Stronger.



Pioneering Ultra-Lightweight Design for Every Power Need



30%

Lighter Than 200W Solar Panels



Weight
6.2 lb



Dimensions (Folded)
20.1 × 23.6 × 2.5 in

Industry's Longest-Warranty Foldable Solar Panels



5-Year

Warranty

10-Year

Lifespan

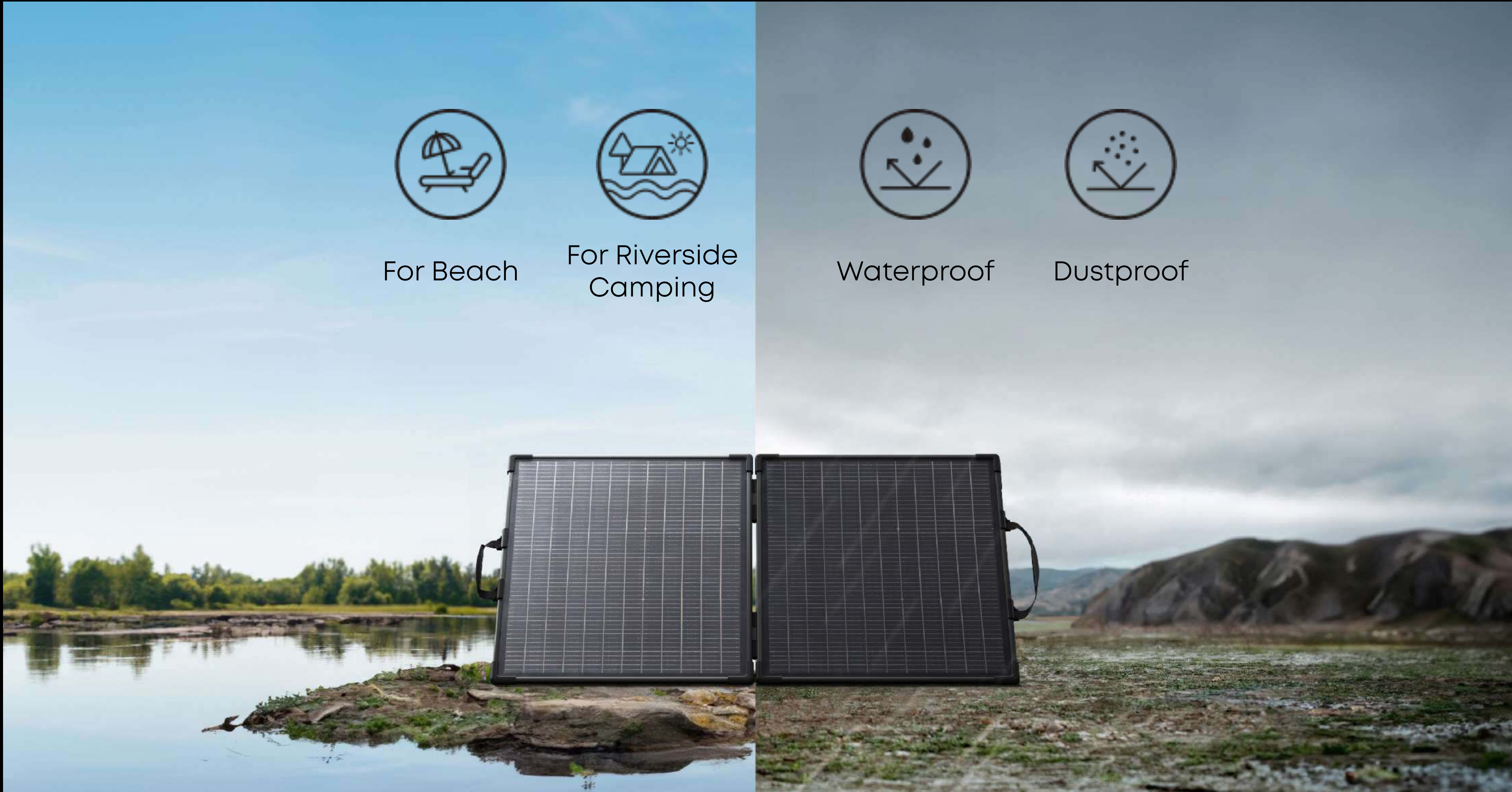


Durable Fluorine



Scratch Resistance

Durable IP68 Protection for Uninterrupted Performance



For Beach



For Riverside
Camping



Waterproof



Dustproof

IP68

Waterproof For Worry-Free Trips

Stay protected against unpredictable weather, even heavy rain.

Unlock Double Power with Industry-Leading Bifacial Tech



10%

More Output Than Single-Sided Panels

Generates power from both the front and rear surfaces, delivering up to 10% more output than single-sided panels.

Note: Optimal sunlight angle recharges device faster.

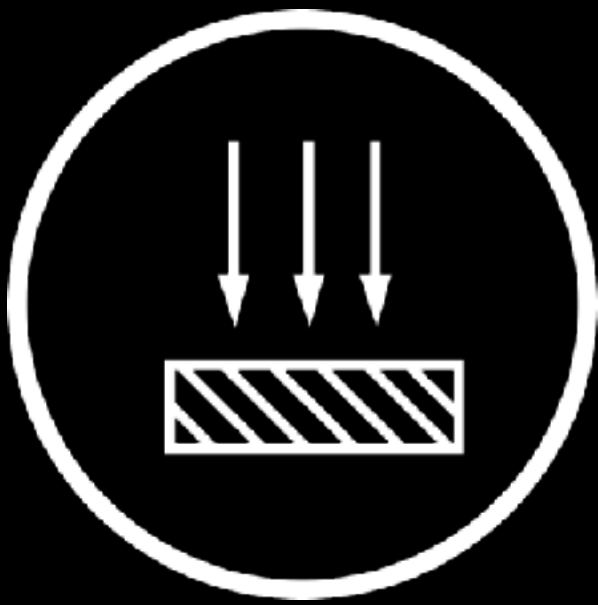
High Conversion Efficiency



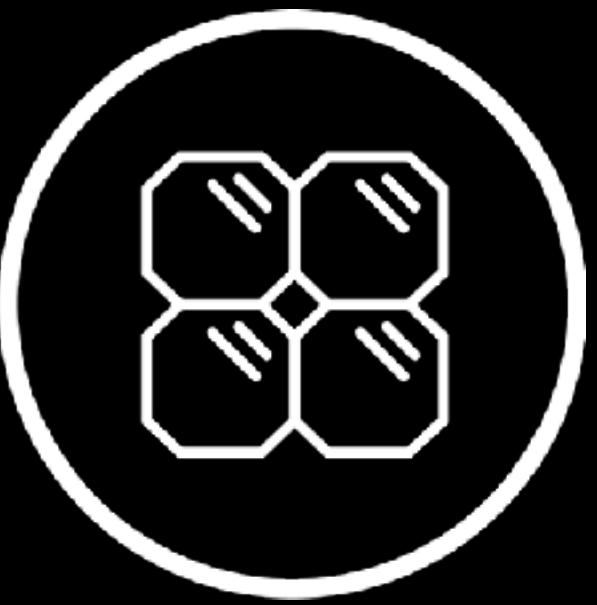
25%+

High Conversion Efficiency

Powered by advanced N-type cell technology.



More Captured Sunlight, More Power



Monocrystalline Solar Cell Optimization

¹Data based on comparing other solar panels with a 15% conversion rate.

Anker SOLIX PS200 Portable Solar Panel

Go Light. Stay Powered.

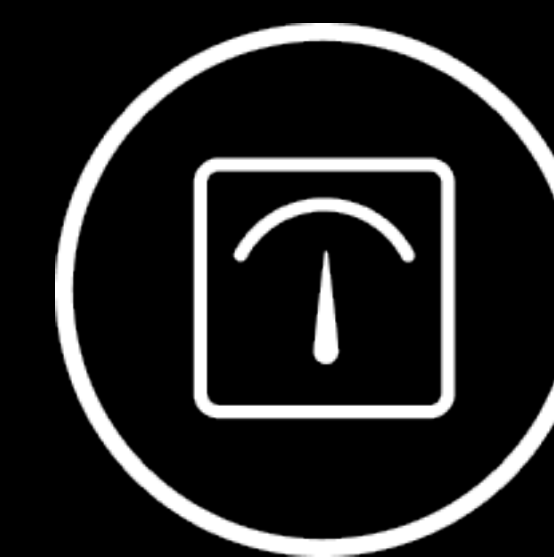


Pioneering Ultra-Lightweight Design for Every Power Need



30%

Lighter Than 200W Solar Panels



Weight
10.69 lb



Dimensions (Folded)
27.0 × 31.2 × 1.8 in

Industry's Longest-Warranty Foldable Solar Panels



5-Year

Warranty

10-Year

Lifespan



Durable Fluorine



Scratch Resistance

Durable IP68 Protection for Uninterrupted Performance



IP68

Waterproof for Worry-Free Trips

Stay protected against unpredictable weather, even heavy rain.

Unlock Double Power with Industry-Leading Bifacial Tech



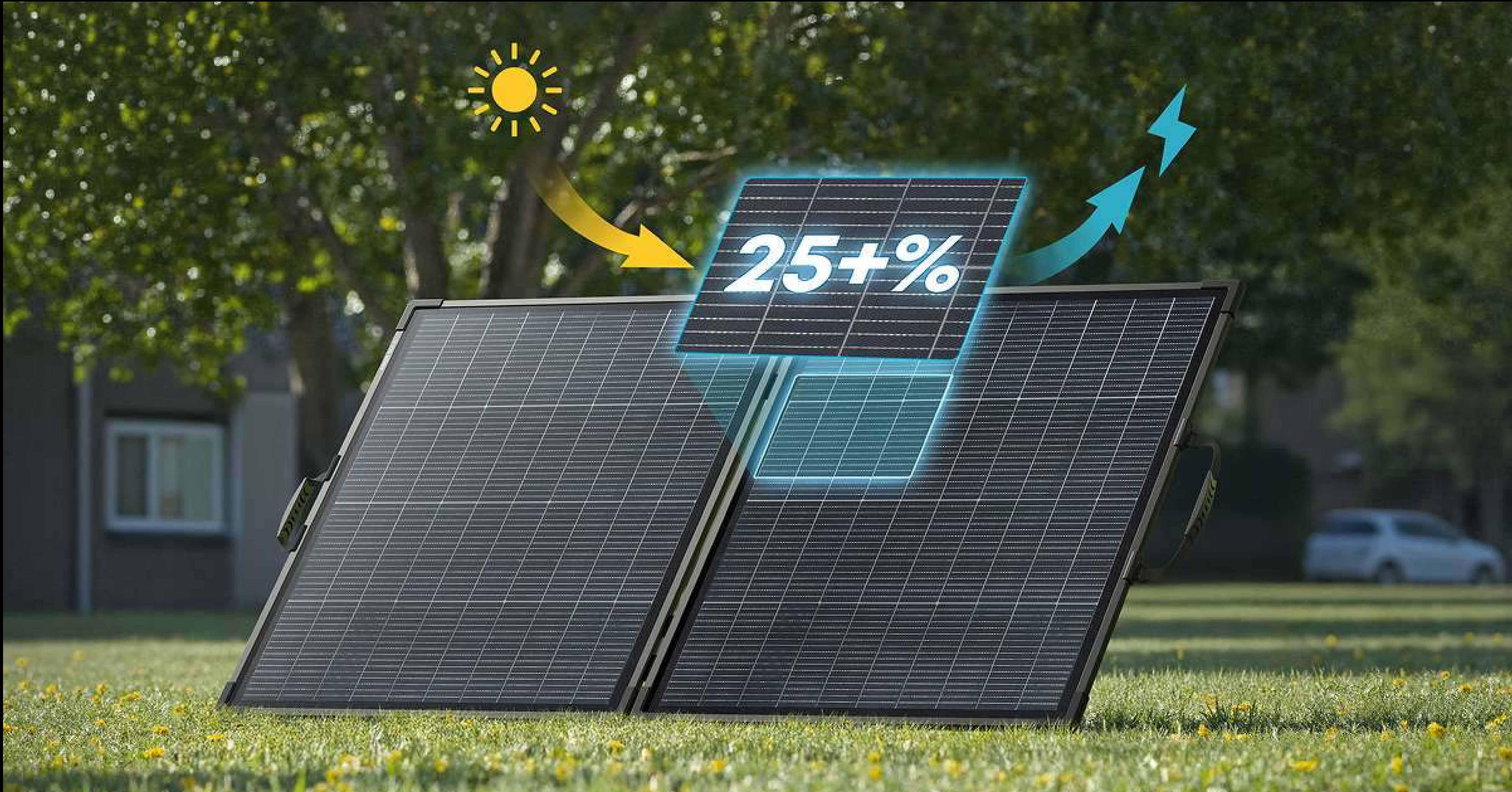
10%

More Output Than Single-Sided Panels

Generates power from both the front and rear surfaces, delivering up to 10% more output than single-sided panels.

Note: Optimal sunlight angle recharges device faster.

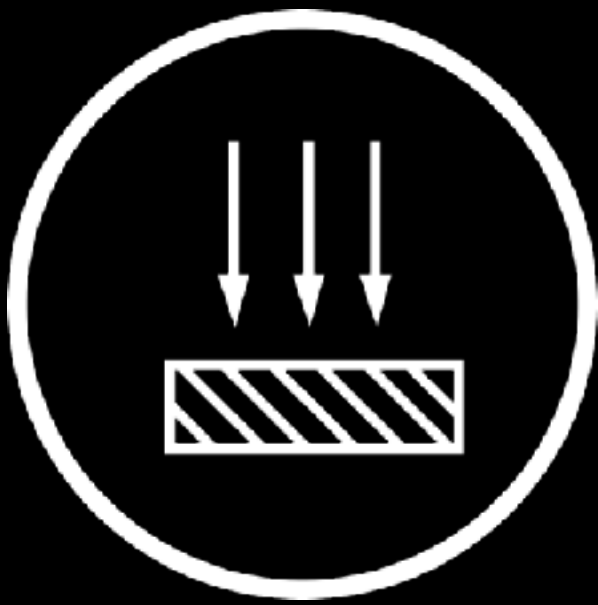
High Conversion Efficiency



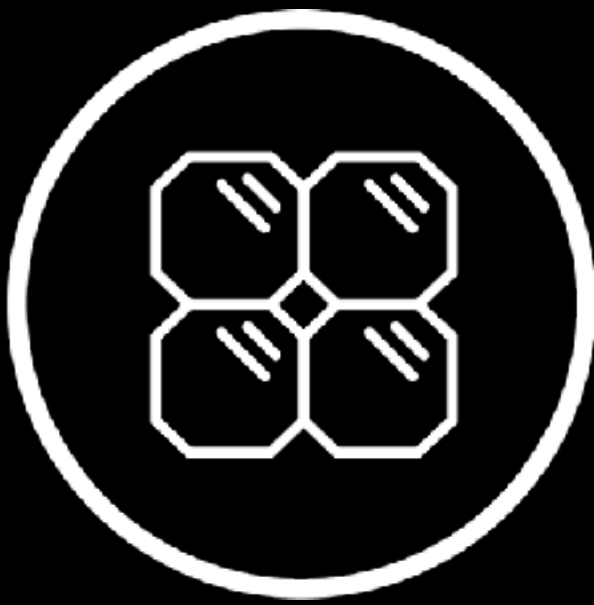
25%+

High Conversion Efficiency

Powered by advanced N-type cell technology.



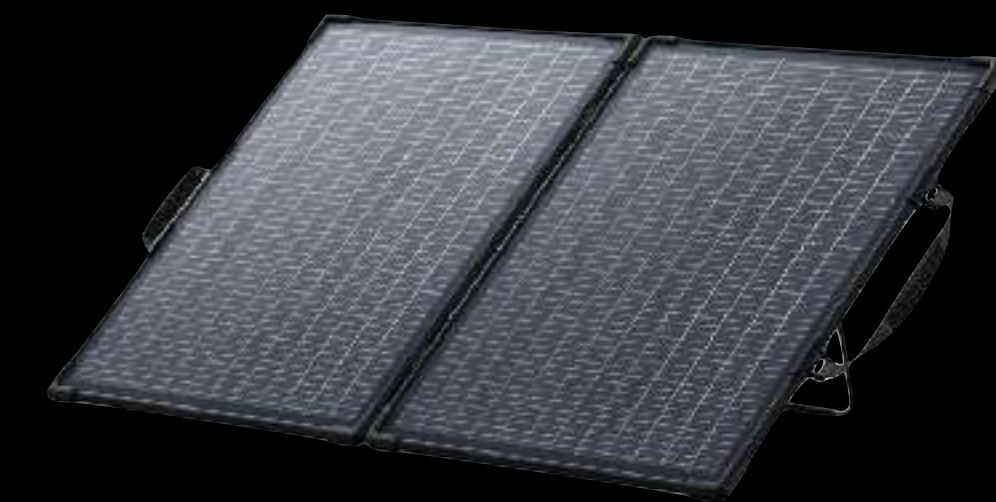
More Captured Sunlight, More Power



Monocrystalline Solar Cell Optimization

¹Data based on comparing other solar panels with a 15% conversion rate.

Specifications



Product Name	PS100 Bifacial Portable Solar Panel	PS200 Bifacial Portable Solar Panel	PS400 Bifacial Portable Solar Panel
Component Type	N-Type	N-Type	N-Type
Generation Efficiency	25%	25%	25%
Certification Requirement	Certification IP68, IEC 63163, RoHS, REACH, POPs, CP65, TSCA		
	Electrical Characteristics (STC)		
Maximum Power (Pmax)	100W	200W	400W
Open Circuit Voltage (VOC)	25.9V	57.6V	57.6V
Short Circuit Current (Isc)	4.86A	4.38A	8.75A
Pmax Voltage (Vmp)	21.6V	48V	48V
Pmax Current (Imp)	4.63A	4.16A	8.33A
Conversion Efficiency	25%	25%	25%
IP Degree	IP68	IP68	IP68
Operating Temperature	-4°F - 140°F (-20°C - 60°C)	-4°F - 140°F (-20°C - 60°C)	-4°F - 140°F (-20°C - 60°C)
Power Tolerance	+ -5 %	+ -5 %	+ -5 %
Maximum System Voltage	75VDC	75VDC	75VDC
	Specs		
Folded Dimensions	20.1 × 23.6 × 2.5 in (510 × 600 × 64 mm)	27.0 × 31.2 × 1.8 in (685 × 792 × 45 mm)	22.3 × 38.7 × 3.2 in (567 × 983 × 80 mm)
Unfold Dimensions	1,030 × 600 × 17 mm	1,377 × 792 × 17 mm	2,292 × 983 × 17 mm
Net Weight	2.8 kg	4.75 kg	9.95 kg
Package Dimensions	670 × 95 × 595 mm	850 × 100 × 770 mm	1,040 × 135 × 660 mm
Gross Weight	4.9 kg	7.85 kg	13.6 kg
Connector Type	MC4	MC4	MC4
Warranty	5 Years	5 Years	5 Years
Lifespan	10 Years	10 Years	10 Years