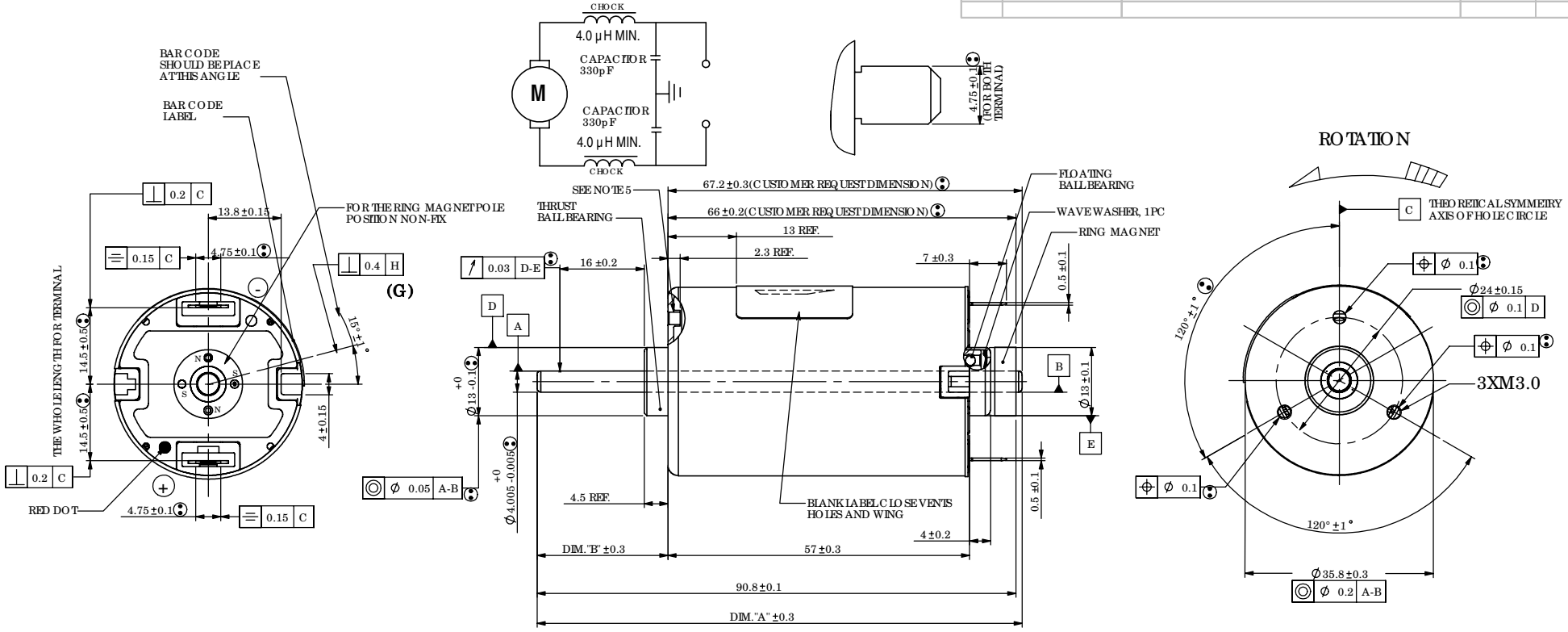


ATT	REF	DESCRIPTION	DATE	BY
F	CRRN#3J/16171	SEE MARK "F"	08-10-22	HC
G	CRRN#3J/16882	SEE MARK "G"	08-12-16	HC

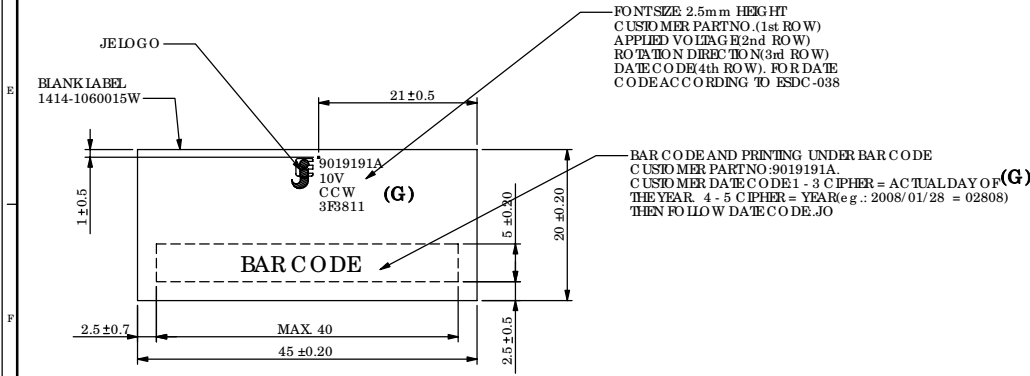
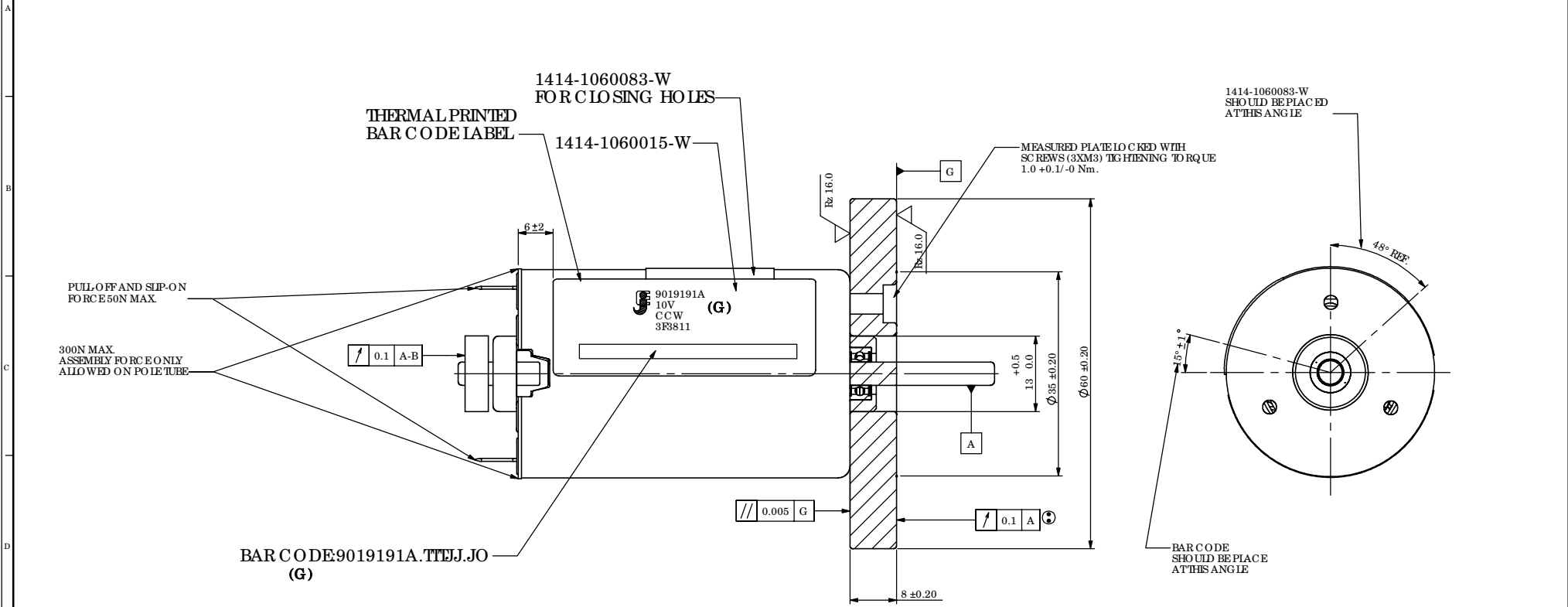


- NOTES:
- LENGTH OF SHAFT DIM. "A" 92.0 mm.
  - FROM EXTENSION, DIM. B 24.8 mm, MEASURED WITH SHAFT PUSHED AGAINST STEEL END CAP.
  - DIRECTION OF ROTATION: ANTI-CLOCKWISE WHEN VIEWING MOTOR OUTPUT SHAFT END WITH POSITIVE VOLTAGE APPLIED TO POSITIVE TERMINAL.
  - AXIAL END PLAY: 0.12 mm MAX.
  - TAPPED HOLES CAN ACCEPT MAX. USABLE MALE SCREW LENGTH OF 4.3 mm.
  - 100% TESTING OF THE FOLLOWING POINTS:
    - ROTATION DIRECTION
    - SPEED UNDER NOMINAL TORQUE (20mNm)
    - NOMINAL CURRENT (20mNm)
    - ISOLATION STRENGTH

DWN. BY ned	CHK. BY	APP. BY
Date (yyyymmdd) 2008/11/12	Date (yyyymmdd)	Date (yyyymmdd)

<table border="1"> <thead> <tr> <th>Cpk</th> <th>Key Product</th> <th>Customer Significant</th> </tr> </thead> <tbody> <tr> <td>&gt; 1.67</td> <td>☉</td> <td>☐</td> </tr> <tr> <td>&gt; 1.33</td> <td>☉</td> <td>☐</td> </tr> <tr> <td>&gt; 1.00</td> <td>☉</td> <td>☐</td> </tr> <tr> <td>Not Required</td> <td>☉</td> <td>☐</td> </tr> </tbody> </table>	Cpk	Key Product	Customer Significant	> 1.67	☉	☐	> 1.33	☉	☐	> 1.00	☉	☐	Not Required	☉	☐	FINISH: General tolerance: ISO 2768-1 Class m (Unless specified) JOHNSON ELECTRIC GROUP OF COMPANIES ("JOHNSON ELECTRIC") This document is the property of Johnson Electric and the information therein contains confidential data and its use in production or other use, without the direct or indirect, in whole or in part, is strictly prohibited. All products made or otherwise derived directly or indirectly from this document are proprietary to Johnson Electric. © Copyright Johnson Electric S.A. 2003. All rights reserved.	ALL DIMENSIONS ARE IN MILLIMETERS SCALE 1:1 TITLE MOTOR OUTLINE DWG No. 61101-99900 SHEET 1 OF 2
	Cpk	Key Product	Customer Significant														
> 1.67	☉	☐															
> 1.33	☉	☐															
> 1.00	☉	☐															
Not Required	☉	☐															

REV	REF	DESCRIPTION	DATE	BY
F	CFRN#3J/16171	SEE MARK "F"	08-10-22	HC
G	CFRN#3J/16882	SEE MARK "G"	08-12-16	HC



Characteristics		FINISH:		MATERIAL:		DWN BY AND R/O		CHK BY		APP BY	
Cpk	Key Product	Customer Significant	General Tolerance	ESD 2768-1 Class	(Unless specified)	ALL DIMENSIONS ARE IN MILLIMETERS	Date (yyyymmdd)	Date (yyyymmdd)	Date (yyyymmdd)	Date (yyyymmdd)	Date (yyyymmdd)
> 1.67	☉	☐	General Tolerance: ES 2768-1 Class (Unless specified)	JOHNSON ELECTRIC	JOHNSON ELECTRIC GROUP OF COMPANIES ("JOHNSON ELECTRIC")	SCALE	1:1	TITLE: <b>MOTOR OUTLINE</b> DWG No. <b>61101-99900</b>			
> 1.88	☉	☐	JOHNSON ELECTRIC	This document is the Property of Johnson Electric and the information therein contained is confidential. This information is for production use only. The use, whether directly or indirectly, in whole or in part, is strictly prohibited. All products made or otherwise derived directly or indirectly from this document are proprietary to Johnson Electric. © Copyright Johnson Electric S.A. 2008. All rights reserved.		SHEET 2 OF 2					