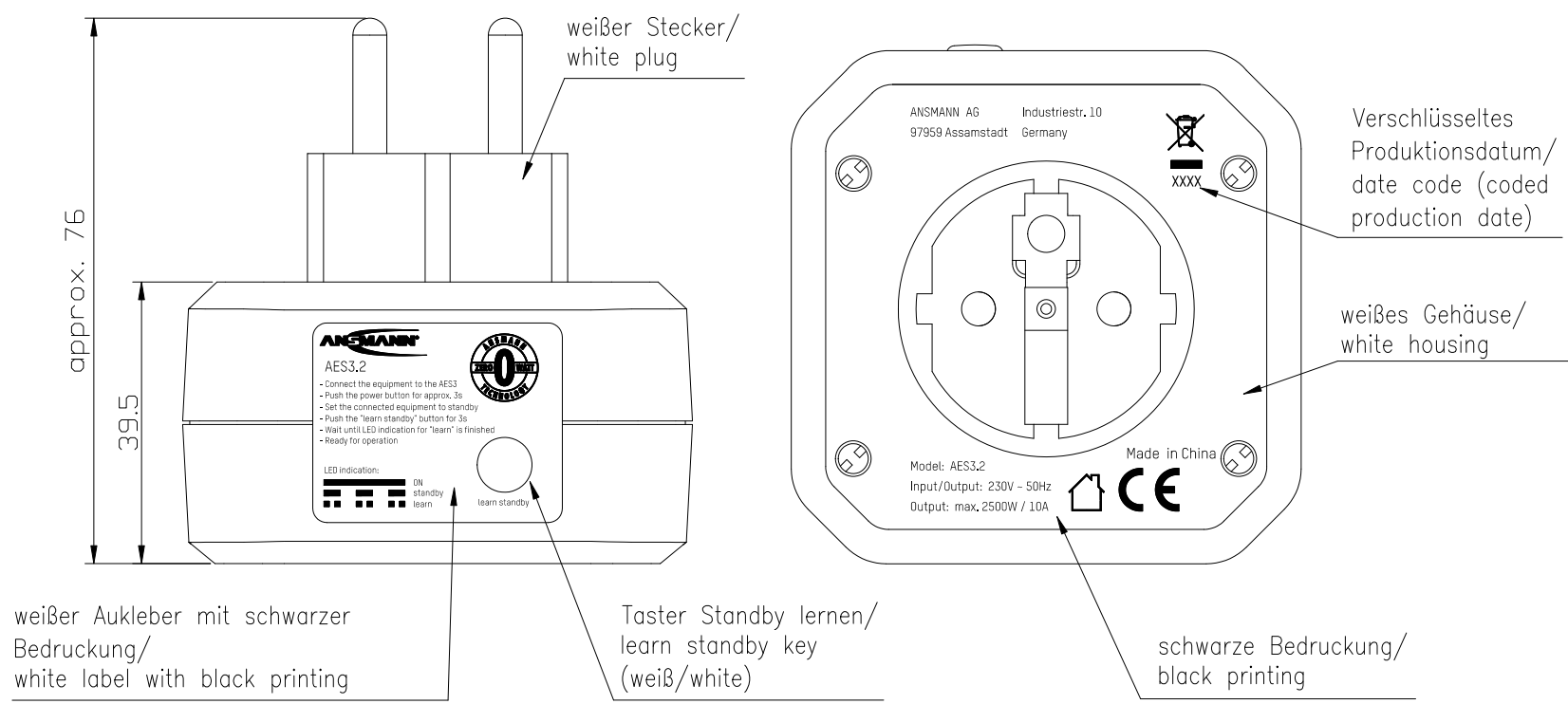
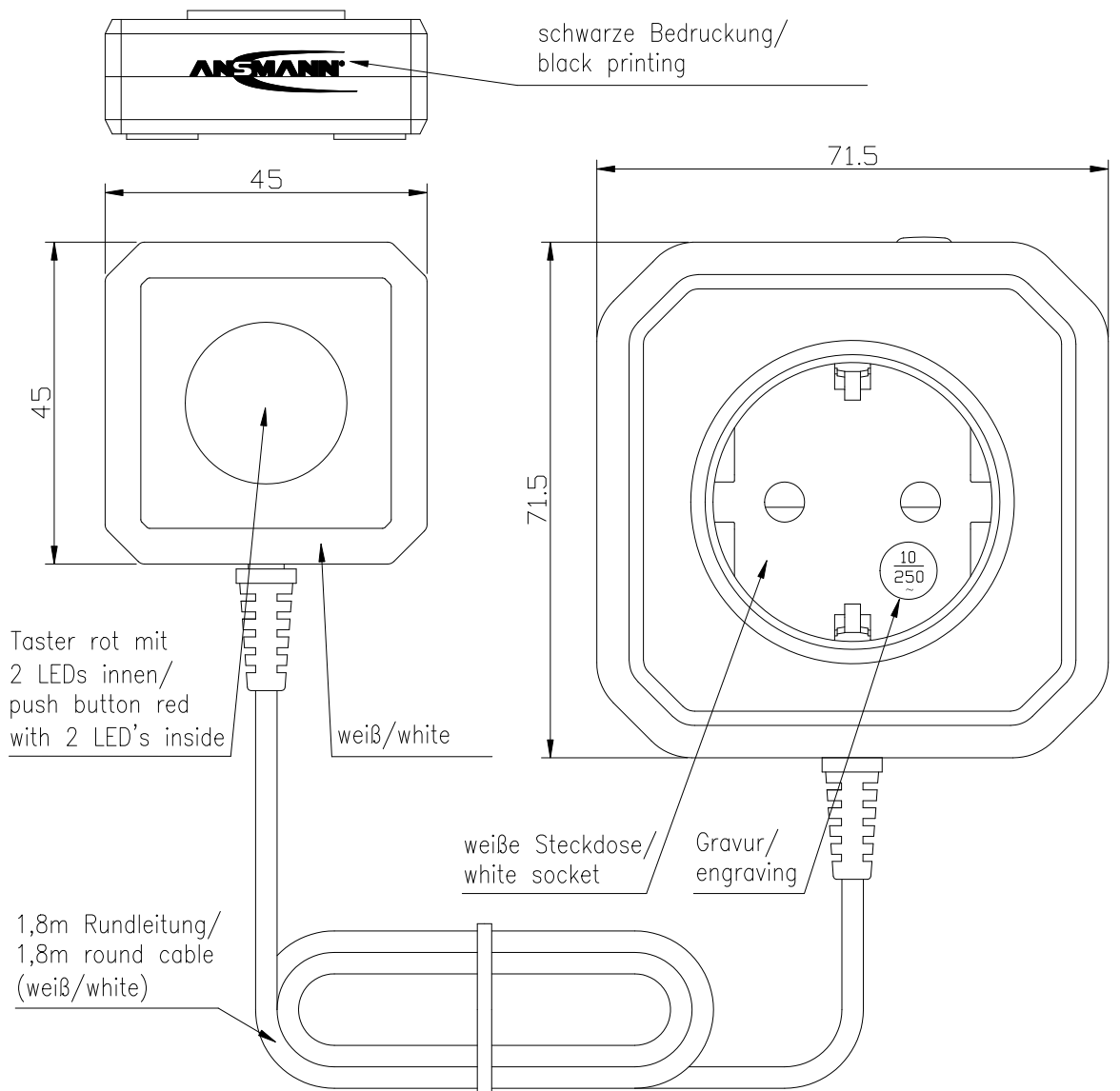


The supplier acknowledges that, with the acceptance of the drawing, he is in a position to manufacture the illustrated part in accordance with the drawing in reproducible form and series production. Through the selected manufacturing processes no impairments will arise in the material and structure which could subsequently lead to an impairment of the component. Verbal agreements over and above that are not valid. Deviations from this rule must be written and must be signed by the purchaser.



Technische Daten/  
technical data

Eingangsspannung/  
input voltage : 230V ~ ±10% / 50Hz

Eigene aktive Einangsleistung/  
self active power consumption : max. 0.5W

Ausgangsspannung/  
output voltage : 230V ~ / 50Hz

Schaltleistung/  
breaking capacity : max. 2500W / 10A (Ohmsche Last / resistive load)  
max. 1150VA / 5A (Induktive Last / inductive load)

Lernbare  
Standby Leistung/  
adaptive  
standby power : max. 70W

LED Anzeige/  
LED indication

Endgeräte aus/  
equipment off : aus  
off

Endgerät im Standby/  
equipment in standby : blinkt langsam (1s an / 1s aus)  
blinking slow (1s on / 1s off)

Standby Lern Modus/  
standby learn mode : blinkt schnell (300ms an / 300ms aus / 300ms an / 1s aus)  
blinking fast (300ms on / 300ms off / 300ms on / 1s off)

Endgeräte aktiv  
equipment activ : immer an  
always on

Schutzart/  
protection : IP 20

Betriebstemperatur/  
operating temperature : 0°C.....+25°C

Lagertemperatur/  
storage temperature : -25°C.....+70°C

Gewicht/  
weight : 200g ohne Verpackung/  
200g without package

Gehäuse/  
case : Steckergehäuse weiß/  
plug-in case white

Verpackung/  
packaging : Faltschachtel inkl. mehrsprachiger Bedienungsanleitung/  
carton box incl. multilingual operating instruction

Approbation/  
approval : CE

Application range for inquiry AN-LN-2017-256				Allowable deviation general tolerances		Tolerance principle:		Model:		Material:	
				DIN ISO 2768-m		ISO 8015		Scale (DIN A3): 1:1		All dimensions in mm	
				2018		Date		Name		Weight:	
				Drawn by		21.02		SIT		Drawing name	
				Approved by						AES3.2	
										auto-standby main switch	
V0 Printing changed				20.09.18		SIT		ANSMANN		Drawing number	
V0 ---				21.02.18		SIT				Part number	
Version				Change		Date		Name		Project: xx-xxxx-xxxx	
										Replaced by:	
										Replacement through:	
										1260-0002	
										Sheet 1/1	