

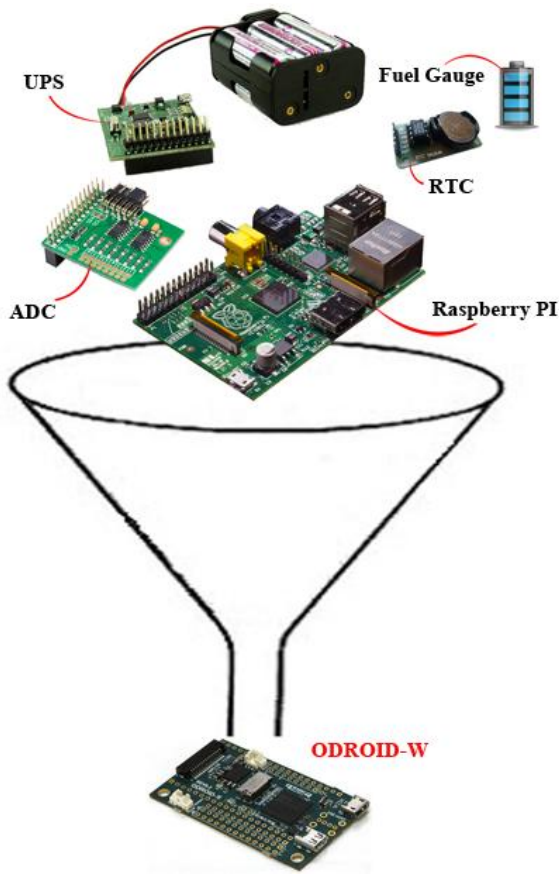
ODROID-W

ODROID-W is a miniature computing module which is fully compatible with all software available for the Raspberry-Pi.

The **W** stands for:

- **W**earable device development
- **W**idely applicable Internet of Things (IoT) development
- **W**orkable DIY electronics prototyping

If you are in EU, you can purchase it from Germany
<http://www.pollin.de/shop/>



The ODROID-W measures a very small 60x36x7mm (2.4 x 1.4 x 0.3"). new features and improvements over the original Raspberry Pi:

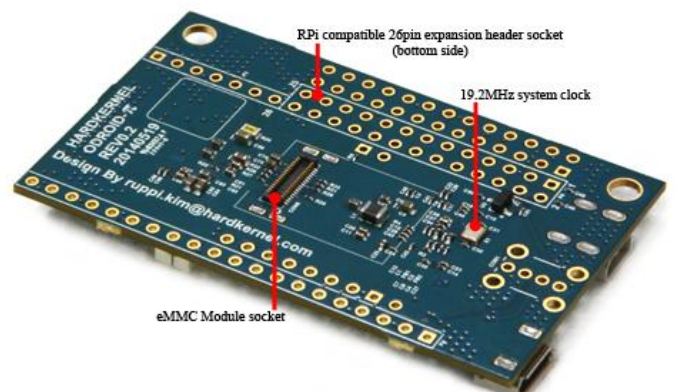
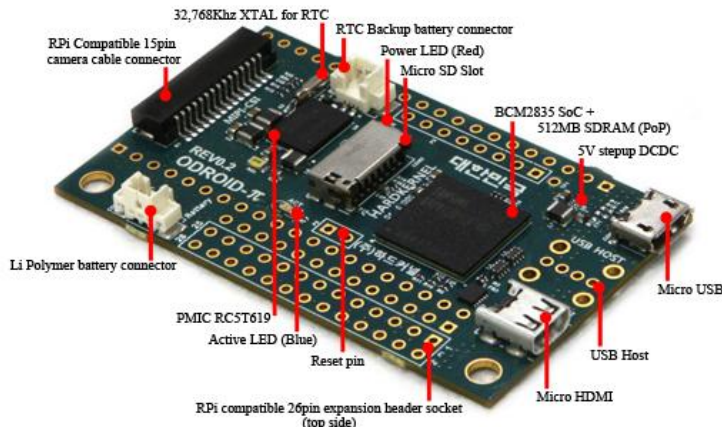
- Li+ rechargeable battery charger and fuel gauge for portables, wearable and robots application
- Real Time Clock to keep accurate time without an Internet connection by just adding a coin battery
- 12-bit precision ADC to measure the dynamic voltage signals via two single-ended inputs
- DC/DC step-down converters for higher power efficiency
- DC/DC step-up converter for 5Volt rails (USB host and HDMI) from a Li-Polymer battery
- USB Host port can be placed on top or bottom as preferred
- DIY friendly 0.1inch/2.54mm pitch IO connector (up to 32 GPIO ports) for handy prototyping

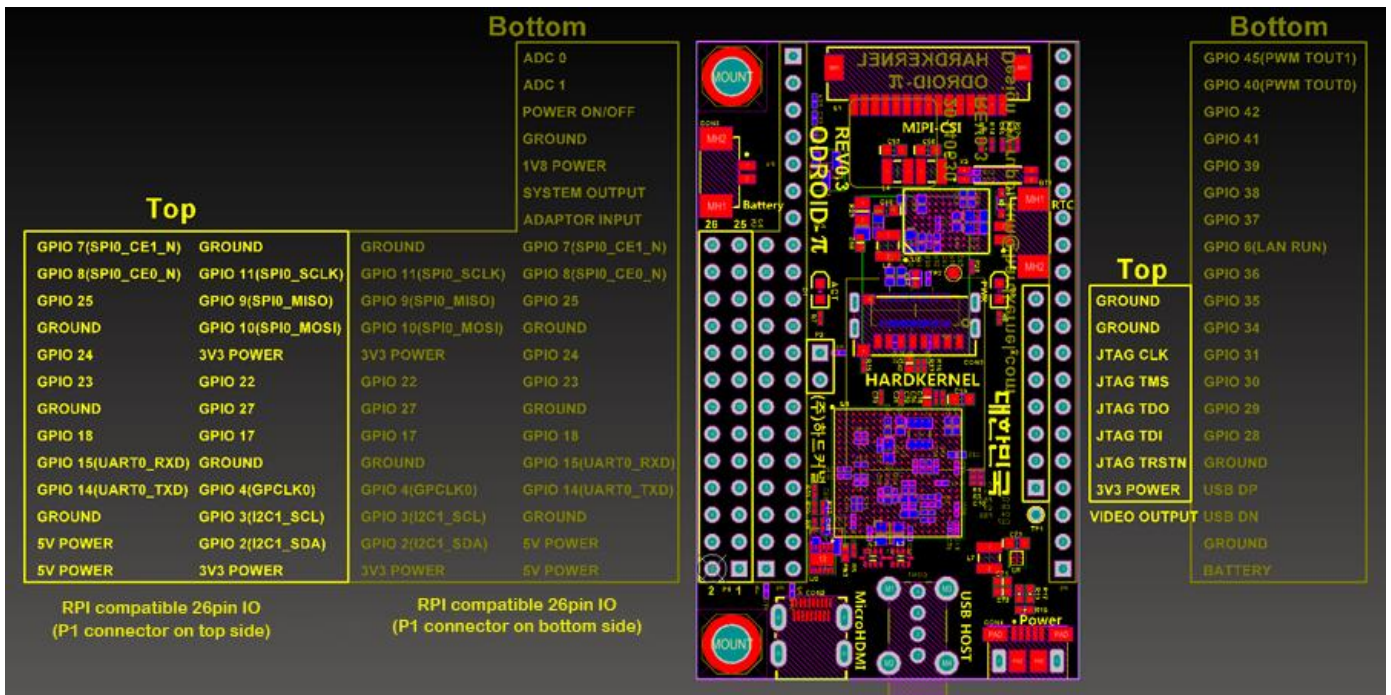
ODROID-W = RPI + RTC + ADC + UPS + Battery gauge with significant Minimalism



TOP

BOTTOM





HARDWARE SPECIFICATION

Processor	Broadcom BCM2835 ARM11 700Mhz
Memory	Samsung 4Gbit (512MB) LPDDR2 SDRAM
PMIC	Ricoh RC5T619 includes DCDCs, LDOs, ADCs, RTC, Battery charger and Fuel gauge
DCDC	TI TPS61259 is 5Volt step-up DCDC for USB host and HDMI block
Video Output	HDMI type-D (Micro-HDMI)
USB	High-speed USB 2.0 host
GPIO connectors	RPI compatible 13x2-pin header on the top side as well as bottom side for 2-way stacking 20+6 pin header for additional GPIO/ADC/Power/USB connection Total 32 GPIOs and 2 ADCs are available.
Camera connector	15pin MIPI-CSI2 (Pi Camera module compatible)
Memory card slot	Micro-SD (T-Flash)
Power	Micro-USB socket for 5Volt input Li-Polymer battery connector (Molex 53398-0271)
RTC power	Backup battery connector (Molex 53398-0271)
Dimensions	60x36 mm
Weight	8 g

Raspberry Pi or RPI is a trade mark of Raspberry Pi Foundation.