

SPECIFICATION:

| | |
|-------------------------------|---------------|
| Operating Current (Nom.): | 1 A |
| Operating Temperature: | -25°C to 85°C |
| Insulation Resistance (Min.): | 1000 MΩ |
| Contact Resistance (Max.): | 15 mΩ |
| Dielectric Strength: | 500 Vac |

MATERIAL:

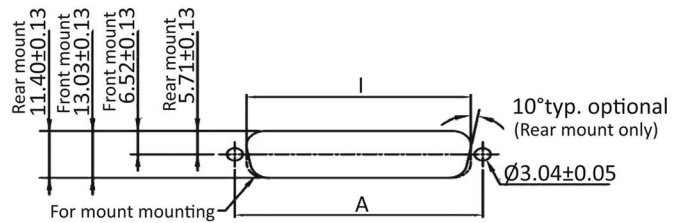
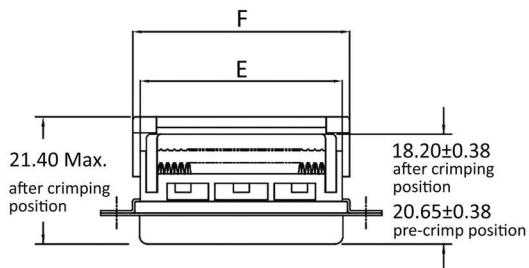
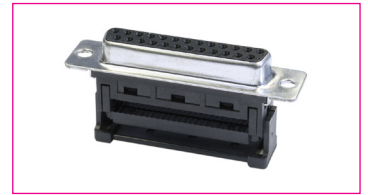
| | |
|--------------------------|--------------------|
| Material (Housing): | steel, tin plated |
| Flammability Class: | UL 94 V-0 |
| Material (Insulation): | PBT |
| Material (Contact Area): | brass, gold plated |

HANDLING:

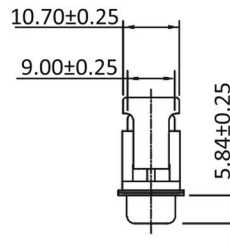
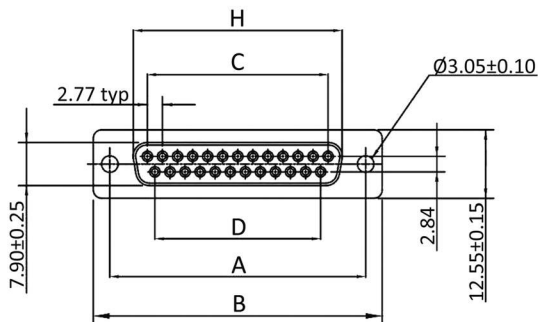
| | |
|------------|------|
| Terminal: | IDC |
| Packaging: | tray |

TOLERANCE:

| | |
|------|--------|
| .X: | ± 0.38 |
| .XX: | ± 0.25 |



Recommended panel cutout dimensions



Dimensions

| Number of Contacts: | A: | B: | C: | D: | E: | F: | H: | I Frontseite: | I Rückseite: |
|---------------------|-------|-------|-------|-------|-------|------|-------|---------------|--------------|
| 9 | 24.99 | 30.8 | 11.08 | 8.31 | 16.1 | 18.6 | 16.33 | 22.2 | 20.47 |
| 15 | 33.32 | 39.1 | 19.39 | 16.62 | 24 | 26.6 | 24.66 | 30.53 | 28.8 |
| 25 | 47.04 | 53.09 | 33.24 | 30.47 | 38.14 | 40.9 | 38.38 | 44.27 | 42.52 |
| 37 | 63.5 | 69.4 | 49.86 | 47.09 | 54.6 | 57.1 | 54.84 | 60.73 | 59.08 |

Order Information

| | | | | | | |
|--------------------------|--|--|--|---|-----------------------|-----------------------------------|
| Identifier: BU | No. of Contacts: # | Contact Plating: # | Shell: K | / | Mounting: F | Insulator Colour: black |
| D-Sub Female IDC | 9: 9 poles 15: 15 poles 25: 25 poles 37: 37 poles | S: selective gold plated * G: gold plated A: 5 μ" gold | metal shell with plastic strain relief | | mounting hole | |

* = Standard