

# smartwares® RM175RF V 1.3 - 2017-11

CE 0359  
RM175RF-002CPR  
17  
Fire Safety EN14604:2005/AC:2008



Optional:  
FOT-143  
Remote control



EN Smoke alarm device / Manual  
DECLARATION OF PERFORMANCE - DoP  
service.smartwares.eu/dop and follow the instructions.

DE Rauchwarnmelder / Gebrauchsanweisung  
LEISTUNGSERKLÄRUNG - DoP  
service.smartwares.eu/dop und folgen Sie den Anweisungen.

FR Détecteur de fumée / Mode d'emploi  
DECLARATION DE PERFORMANCE - DoP  
service.smartwares.eu/dop et suivez les instructions.

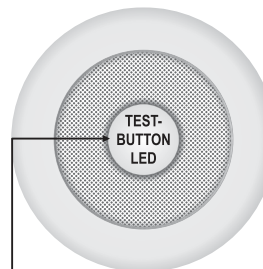
NL Rookmelder / Gebruiksaanwijzing  
VERKLARING VAN PRESTATIES - DoP  
service.smartwares.eu/dop en volg de aanwijzingen.

ES Detector de humo / Instrucciones de uso  
DECLARACIÓN DE PRESTACIONES - DoP  
service.smartwares.eu/dop y siga las instrucciones.

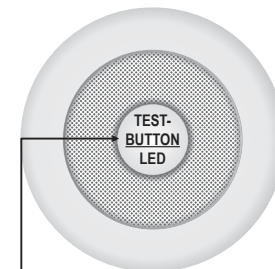
IT Rilevatore di fumo / Manuale  
DICHIARAZIONE DI PRESTAZIONE - DoP  
service.smartwares.eu/dop e seguire le istruzioni.

EN PAIRING - Wireless Connection  
DE KOPPELUNG - drahtlose Verbindung  
FR APPARIEMENT - Connexion sans fil

NL KOPPELEN - Draadloze aansluiting  
ES VINCULACIÓN - Conexión inalámbrica  
IT ASSOCIAZIONE - Connessione Wireless



1. Press button for **12 seconds** until LED light is continuously ON

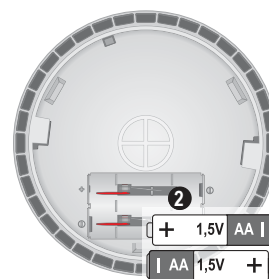
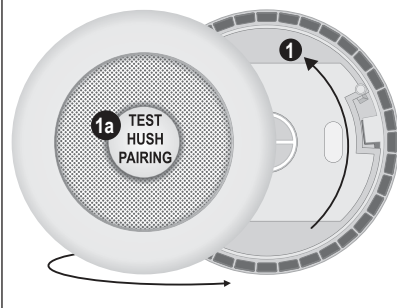


2. Press and hold button until the LED blinks, then release at once.

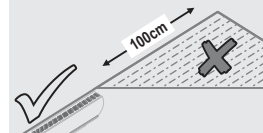
## INTENDED USE: FIRE SAFETY | ESSENTIAL CHARACTERISTICS: PASSED

- Nominal activation conditions/ Sensitivity, Response delay (response time) and Performance under fire condition
- Operational reliability
- Tolerance to supply voltage
- Durability of operational reliability and response delay, temperature resistance
- Durability of operational reliability, vibration resistance
- Durability of operational reliability, humidity resistance
- Durability of operational reliability, corrosion resistance
- Durability of operational reliability, electrical stability

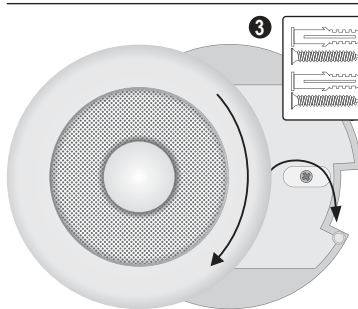
smartwares Europe Jules Verneweg 87 5015 BH Tilburg The Netherlands service.smartwares.eu	NL: 088 5940501 Lokaal tarief	CUSTOMER SERVICE
	BE: 078 481094(NL) Lokaal tarief	
	BE: 078 481540(FR) Tarif local	
	FR: 0825 560 650 18ct/min	
	DE: +49 (0) 1805 010762 14Ct./Min. dt. Festnetz, Mobil max. 42Ct./Min	
UK: +44 (0) 345 230 1231		
ES: +34 938427589		



EN Roof \* DE Dach \* FR Toit  
NL Dak \* ES Baca \* IT Tetto



EN Blind spot; do not mount here  
DE Blinder Fleck; hier nicht montieren  
FR Blind spot; ne rentre pas ici  
NL Dode hoek; hier niet monteren  
ES Punto ciego; no encaja aquí  
IT Angolo morto; non installare qui



EN Ceiling \* DE Decke \* FR Plafond  
NL Plafond \* ES Techo \* IT Soffitto



EN Blind spot; do not mount here  
DE Blinder Fleck; hier nicht montieren  
FR Blind spot; ne rentre pas ici  
NL Dode hoek; hier niet monteren  
ES Punto ciego; no encaja aquí  
IT Angolo morto; non installare qui

EN TEST - Press 5 seconds  
DE TESTEN - 5 Sekunden lang drücken  
FR TESTEZ - Appuyez 5 secondes

NL TESTEN - Druk 5 seconden  
ES PRUEBA - Presione 5 segundos  
IT TEST - Premere per 5 secondi

# smartwares® RM175RF V 1.3 - 2017-11

CE 0359  
RM175RF-002CPR  
17  
Fire Safety EN14604:2005/AC:2008



Optional:  
FOT-143  
Remote control

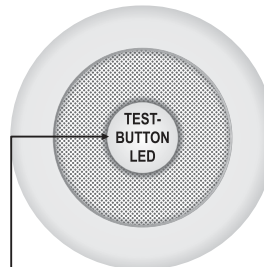


**PT** Dispositivo de deteção de fumo / Manual  
DECLARAÇÃO DE DESEMPENHO - DoP  
service.smartwares.eu/dop e siga as instruções.  
**SV** Rökklarmsenhet / Bruksanvisning  
PRESTANDEKLARATION - DoP  
service.smartwares.eu/dop och följ instruktionerna.  
**CS** Detektor kouře / Návod k obsluze  
PROHLÁŠENÍ o VLASTNOSTECH - DoP  
service.smartwares.eu/dop a postupujte podle pokynů.

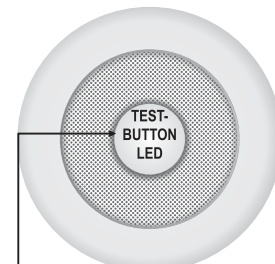
**SK** Detektor dymu / Manuál  
VYHLÁSENIE o VÝKONE - DoP  
service.smartwares.eu/dop a nasledujte pokyny.  
**PL** Czujnik dymu / instrukcje  
DEKLARACJA WYKONANIA - DoP  
service.smartwares.eu/dop i postępuj zgodnie z instrukcjami.  
**TR** Duman alarmı cihazı / Kilavuz  
PERFORMANS BEYANI - DoP  
service.smartwares.eu/dop ve talimatları izleyin.

**PT** EMPARELHAMENTO - Ligação sem fios  
**SV** SAMMANKOPPLING - Trådlös anslutning  
**CS** PÁROVÁNÍ - Bezdrátové připojení

**SK** PÁROVANIE – Bezdrôtové pripojenie  
**PL** PAROWANIE – połączenie bezprzewodowe  
**TR** EŞLEŞTİRME - Kablosuz Bağlantı



1. Press button for 12 seconds until LED light is continuously ON



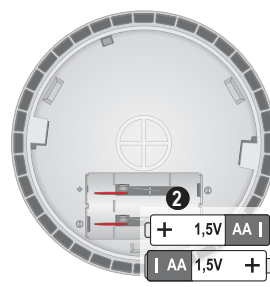
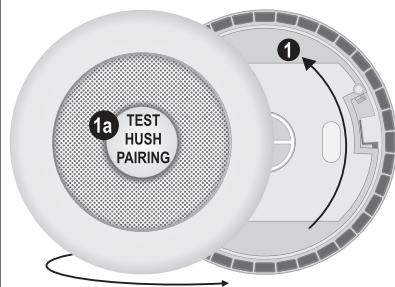
2. Press and hold button until the LED blinks, then release at once.

## INTENDED USE: FIRE SAFETY | ESSENTIAL CHARACTERISTICS: PASSED

- Nominal activation conditions/ Sensitivity, Response delay (response time) and Performance under fire condition
- Operational reliability
- Tolerance to supply voltage
- Durability of operational reliability and response delay, temperature resistance
- Durability of operational reliability, vibration resistance
- Durability of operational reliability, humidity resistance
- Durability of operational reliability, corrosion resistance
- Durability of operational reliability, electrical stability

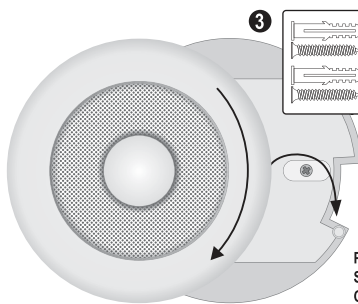
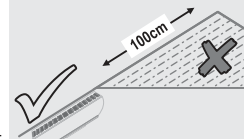
smartwares Europe	NL: 088 5940501	Lokaal tarief
	BE: 078 481094(NL)	Lokaal tarief
Jules Verneweg 87 5015 BH Tilburg The Netherlands	FR: 0825 560 650	Tarif local
	DE: +49 (0) 1805 010762	14Ct./Min. dt. Festnetz, Mobil max. 42Ct./Min
service.smartwares.eu	UK: +44 (0) 345 230 1231	
	ES: +34 938427589	

CUSTOMER SERVICE

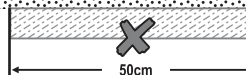


PT Cobertura \* SV Tak \* CS Střecha  
SK Strecha \* PL Dach \* TR Çatı

- PT Ponto-morto; não instale aqui
- SV Blind punkt; montera inte här
- CS Misto se špatným signálem; zde jej nepřipevňujte
- SK Mrtvý uhol; nemontujte sem
- PL Ślepa plamka; Nie montowac tutaj
- TR Kör nokta; burayara monte etmeyin



PT Teto \* SV Tak \* CS Strom  
SK Strop \* PL Sufit \* TR Tavan



- PT TESTAR - Prima 5 segundos
- SV TEST - Tryck i 5 sekunder
- CS TESTOVÁNÍ - Stiskněte na 5 sekund
- SK SKŮŠANIE - Stlačte po dobu 5 sekúnd
- PL TESTOWANIE - Naciśnij 5 sekund
- TR TEST - 5 saniye basın

- PT Ponto-morto; não instale aqui
- SV Blind punkt; montera inte här
- CS Misto se špatným signálem; zde jej nepřipevňujte
- SK Mrtvý uhol; nemontujte sem
- PL Ślepa plamka; Nie montowac tutaj
- TR Kör nokta; burayara monte etmeyin