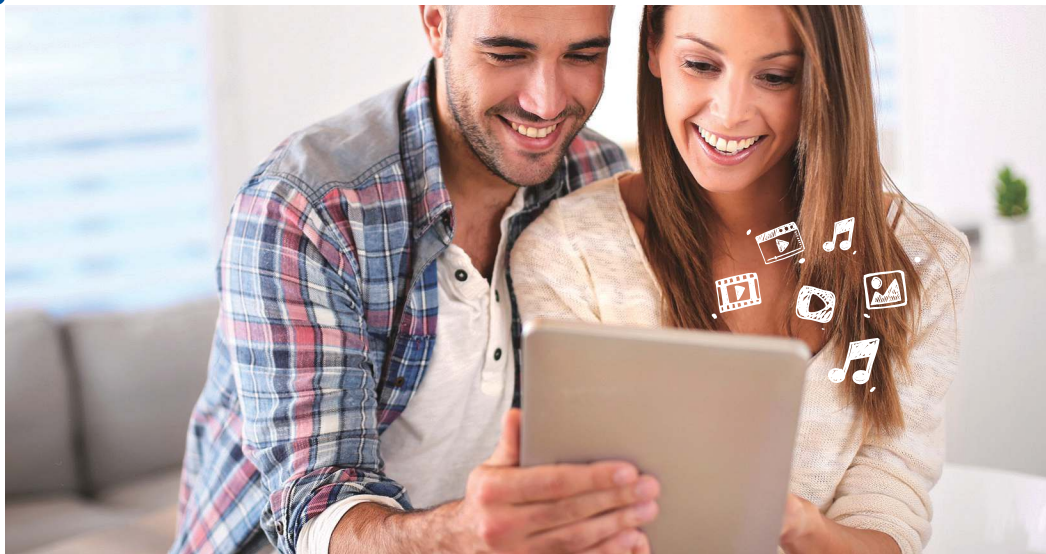


# ZyXEL



## Reliable, Secure, and User Friendly Personal Cloud Storage

# 2 Bay

- 1.2 GHz dual-core processor with link aggregation for excellent performance
- Hot-swappable hard drives installation
- Bolt free design for quick and easy setup
- 90 mm fan for cool and quiet operation environment
- Personalized subdomain to simplify remote linking
- User friendly content access via zCloud mobile app handhelds

It is essential in the modern connected world to access your data anytime, anywhere with your latest mobile gadgets. The ZyXEL NAS520 2-Bay Personal Cloud Storage is an one stop for all your private documents, photos, music, and videos to provide the most convenient access to all your digital contents.

Powered with a 1.2 GHz dual-core processor and link aggregation capability, backup files, download files, and/or stream HD videos are faster. With USB 3.0 and SDXC memory card slot, the NAS520 store copies onto the network in a snap to experience seamless networking storage performance.

ZyXEL offers a myZyXELcloud website to easily access and change settings to the NAS520 from all your connected mobile devices with web browsers wherever you go. Use the free mobile app zCloud on your Android/iOS devices to access and playback your favorite media while you're on the go. In addition, ZyXEL integrates with Google Drive™\*\*, Memopal, and ownCloud for users' convenience for all data on the NAS520. Find out more about ZyXEL, NAS520!

### Benefits

#### Fast and reliable performance for productivity

The ZyXEL NAS520 is equipped with a 1.2 GHz dual-core processor and link aggregation. A high performance engine utilizes both Ethernet ports to provide up to 106 MB/sec read and above 85 MB/sec in write. Instantly retrieve data from your mobile devices, backup files, and stream UHD 4K video contents without performance stutter.



**NAS520**  
2-Bay Personal Cloud Storage



### Replace hard drives easily with hot-swap

The ZyXEL NAS520 hot-swapping enables quick hard drive replacement without shutting down or interruption while the system is in operation.



### Bolt free design for quick and easy setup

The bolt free design makes it convenient to install your hard disks into the ZyXEL NAS520 without any screwdrivers or other hardware tools.

#### HDD Installation

**1** Remove the front panel



**2** Remove the clips from the tray



**3** Clip on hard drive and slide it back



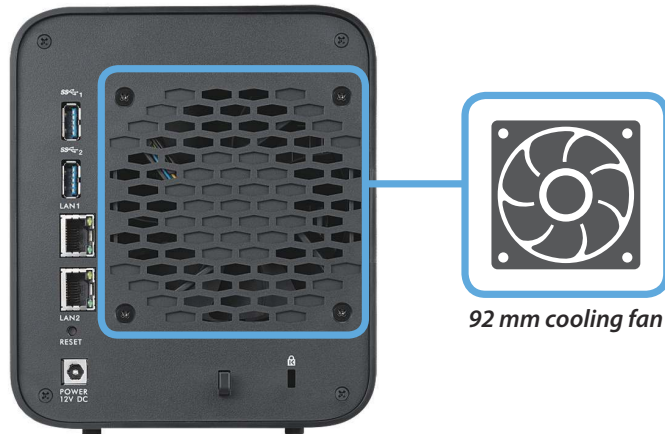
### Access your data from anywhere

Incorporate with myZyXELcloud, ZyXEL free Dynamic Domain Name System, to create a personal cloud and access all your digital contents away from your home on your favorite mobile device(s).



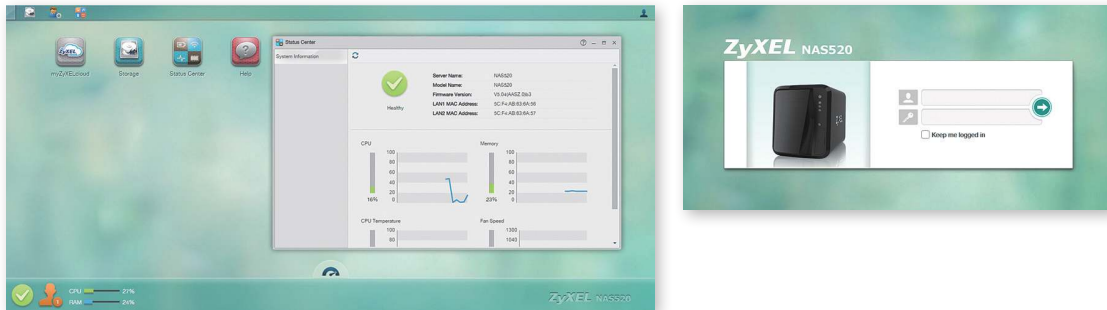
### Cool, quiet operation

Compared to a typical desktop server system, the ZyXEL NAS520 intelligently saves power during low activity to significantly reduce cost on electricity usage. The quiet 92 mm fan cools down the drives inside for better protection from heat damage.



### Simple setup and customized interface

Customize it even further with the easy App center to install and update apps of your preference.



### Share, view, or stream your favorite contents with zCloud mobile app

Share the precious moments captured on digital pictures stored on your ZyXEL NAS520. zCloud app enables your Android/iOS devices to access contents on the NAS520. You can share, view photos, or watch HD videos on your handhelds and even stream them onto the big screen with Apple TV\*, Chromecast\*\*, Samsung TV\*\*\*, or a DLNA enabled device.



### More Features





## NAS520 2-Bay Personal Cloud Storage

### Specifications

#### System Specifications

##### Networking

- Network protocol:
  - CIFS/SMB for Windows
  - NFS for Linux/Unix
  - AFP for Mac
  - DHCP client
  - PPPoE
  - Network Time Protocol (NTP)
- Network applications:
  - Media server:
    - DLNA 1.5 media server
    - UPnP AV server
    - iTunes server
    - Logitech media server
    - Photo album server
  - Web server:
    - WebDAV
    - FTP server
    - phpMyAdmin/MySQL/PHP
    - RSS client & server
    - Print server (CIFS)
    - Remote Access Support (DyDNS)
  - Smartphone applications:
    - zCloud, ownCloud
  - Network application management:
    - User & group management
    - Package management for setting up applications
  - Network security:
    - Support HTTPS and FTPES (FTP over explicit TLS/SSL)
    - Encrypted NAS to NAS remote replication
    - Encrypted NAS to external disk archive backup

##### Data Management

- Backup support:
  - One-touch copy/sync button for external USB/SD-capable devices backup
- Backup planner:
  - Instant/Scheduled backup
  - NAS to NAS synchronization/archive backup
  - Rsync
  - NAS to external USB hard disk backup
- Google Drive™™™, Dropbox, Memopal, ownCloud and NetDrive support™
- Apple Time Machine support

- Download/Upload support:
  - Auto-download from FTP/HTTP/P2P download service
  - Scheduled download
  - Auto-upload photos and videos to YouTube/Flickr/FTP server
- File system support:
  - Internal HDD: EXT4
  - External HDD: NTFS, EXT2, EXT3, EXT4, FAT32, HFS+, exFAT

##### System Management

- JBOD, RAID 0/1
- Online firmware upgrade
- Self-Monitoring Analysis and Reporting Technology (S.M.A.R.T.)
- iSCSI (release in Q4 2015)

##### Power and Thermal Management

- Power control:
  - Internal disk hibernation support
  - Scheduled power on/off/reboot
  - Wake-on-LAN support
  - System automatically resume after power outage
- APC USB UPS monitoring and auto shutdown
- Thermal management:
  - Smart fan speed control
  - High temperature alert/buzzer
  - Auto shutdown while high temperature

##### Minimum System Requirements

- OS for utility:
  - Windows XP onward
  - Mac OS X 10.5 onward
- Browsers: IE 11+, Firefox 20+, Google Chrome 37, Safari 5+

#### Application Package Center

##### Cloud Application

- ownCloud
- Google Drive™™™
- Dropbox
- Memopal

##### Download Management

- NZBGet
- Transmission
- pyLoad

##### Additional

- Gallery
- WordPress
- Tftp
- NFS
- Logitech media server
- PHP-MySQL

#### Hardware Specifications

- CPU: FreeScale FS1024 Dual Core 1.2 GHz
- Memory: DDR3 1 G
- Two 2.5" or 3.5" SATA II hard disk interface supported up to 12 TB (6 TB x 2)
- Two Gigabit Ethernet RJ-45 connector
- Three USB 3.0 ports
- One SDXC card read (Up to 128 GB)
- Buttons:
  - Power button
  - Copy/Sync button
  - Reset button
- Smart fan design
- Power consumption:
  - Access mode: 28.5 watt (full loading : Internal HDD x 2, External HDD x 3, SD x 1)
  - Hard disk spin-down mode: 8.8 watt
- Power:
  - Input: 100 - 240 V AC, 50/60 Hz
  - Output: 12 V DC, 5 A

#### Physical Specifications

- Item dimensions (WxDxH):  
140 x 220 x 160 mm (5.51" x 8.66" x 6.3")
- Item weight: 1,530 g (3.37 lb.)
- Packing dimensions (WxDxH):  
206 x 308 x 281.5 mm (8.11" x 12.13" x 11.08")
- Packing weight: 2,640 g (5.82 lb.)

#### Environmental Specifications

##### Operating Environment

- Temperature: 0°C to 40°C (32°F to 104°F)
- Humidity: 10% to 95% (Non-condensing)

##### Storage Environment

- Temperature: -30°C to 70°C (-22°F to 158°F)
- Humidity: 10% to 95% (Non-condensing)

#### Certification

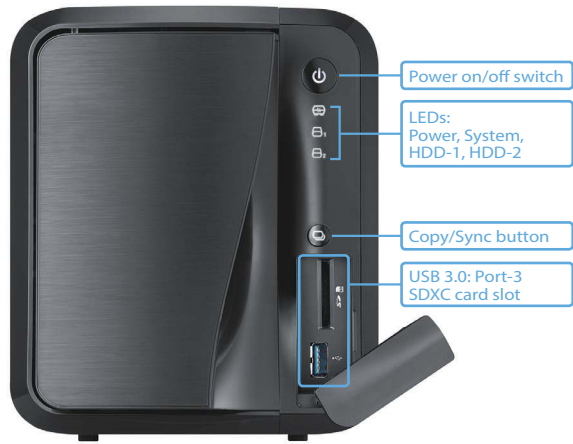
- Safety: CE LVD, BSMI
- EMC: CE, FCC class B, C-Tick, BSMI
- Others: DLNA 1.5, UPnP

\* Apple and Apple TV are trademarks of Apple Inc., registered in the U.S. and other countries. AirPlay is a trademark of Apple Inc. ZyXEL zCloud app v2.1 will support Airplay.

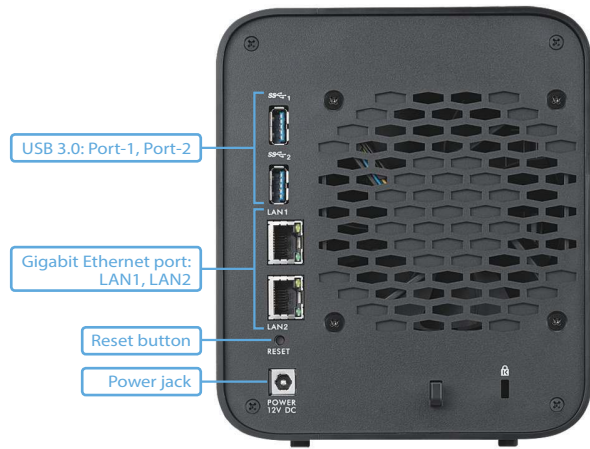
\*\* © 2015 Google Inc. All rights reserved. Chromecast™ is a trademark of Google Inc. ZyXEL zCloud app v2.1 has supported Chromecast.

\*\*\* © 2015 SAMSUNG. All rights reserved. ZyXEL zCloud app v2.2 will support Samsung TV.

**Front Panel**



**Rear Panel**



**Dust Cover**



**Hard Drive Tray**



For more product information, visit us on the web at [www.ZyXEL.com](http://www.ZyXEL.com)



Copyright © 2015 ZyXEL Communications Corp. All rights reserved. ZyXEL, ZyXEL logo are registered trademarks of ZyXEL Communications Corp. All other brands, product names, or trademarks mentioned are the property of their respective owners. All specifications are subject to change without notice.

