

**MATERIAL:**

Material (Housing):

zinc die cast

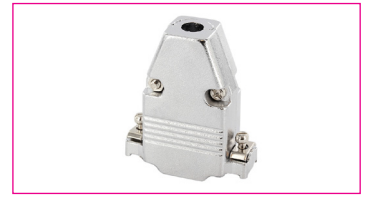
**HANDLING:**

Packaging:

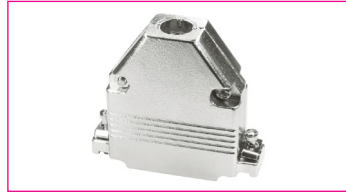
bulk



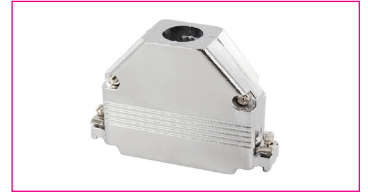
PH9V



PH15V

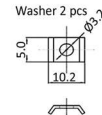
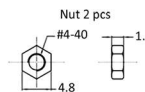
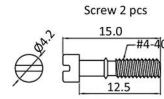
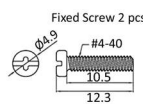
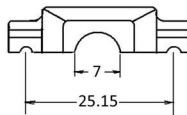
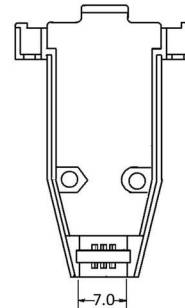
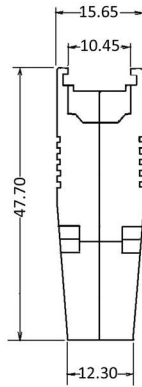
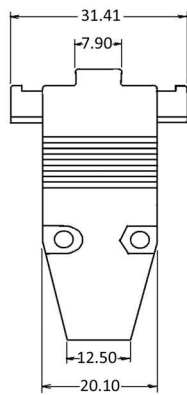


PH25V

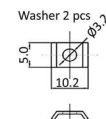
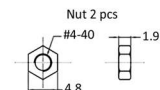
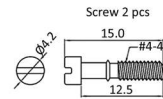
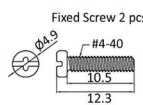
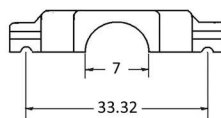
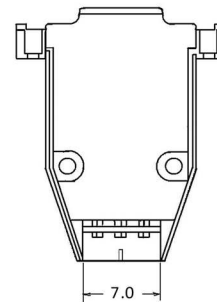
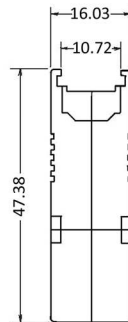
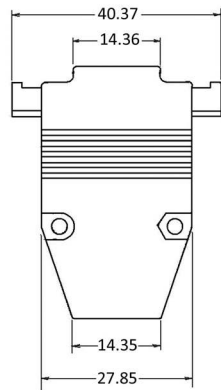


PH37V

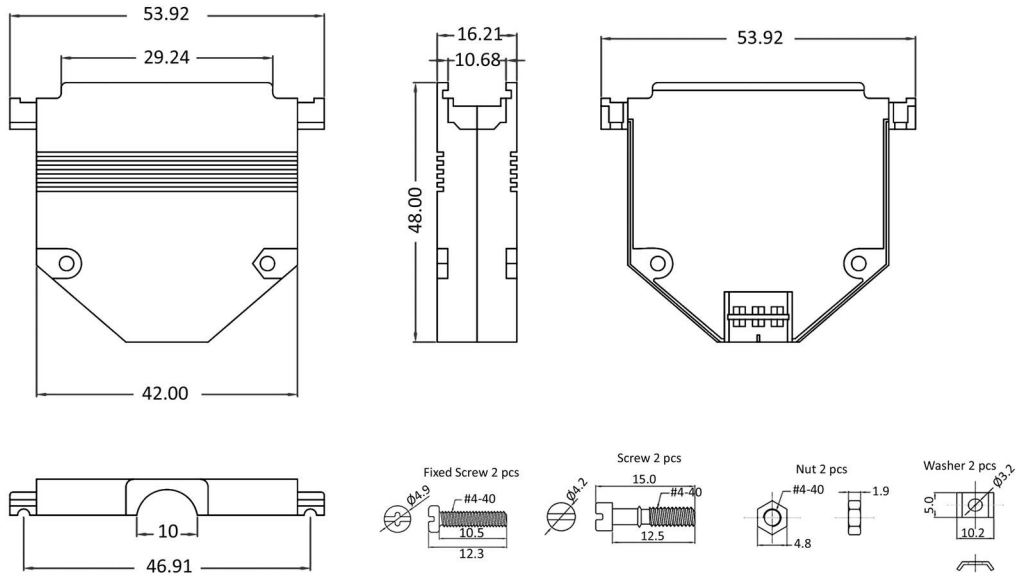
9 pin



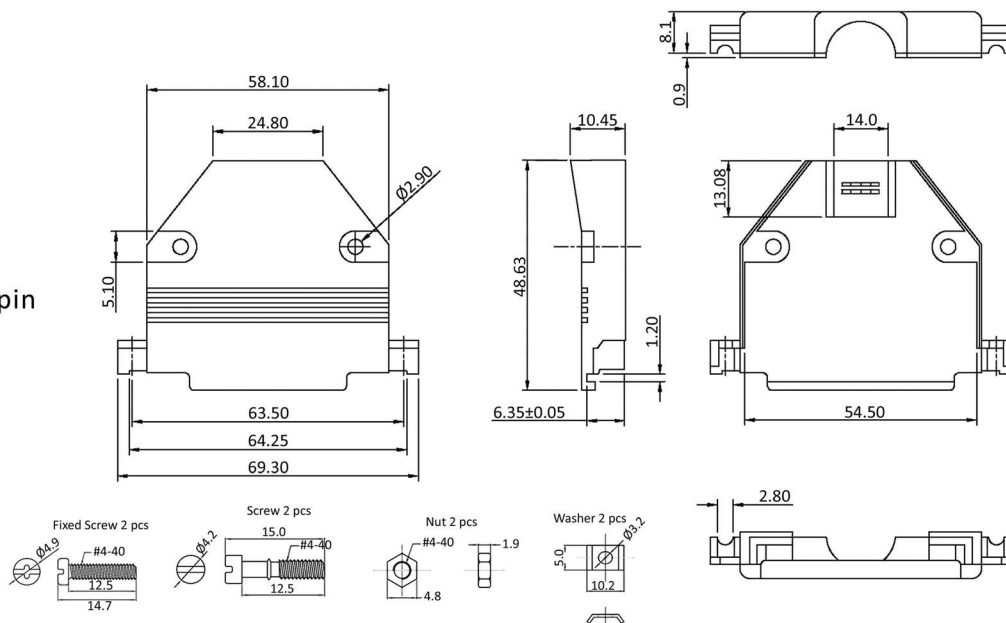
15 pin



25 pin



37 pin



Order Information

Identifier:	No. of Contacts:	Shell:	Version:
PH	#	V	#
Housing with screw locking	9: 9 poles 15: 15 poles 25: 25 poles 37: 37 poles	zinc alloy	empty: see max. outer diameter on drawing 11: outer diameter max. 10 mm (only 15 poles)