

# LogiLink®

## Smoke Alarm Detector

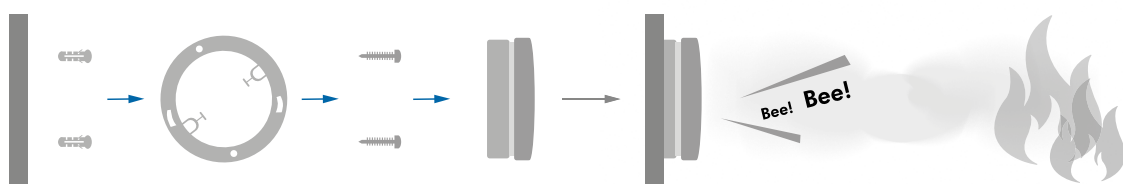
Art. No.: SC0013



Early detection of smoke and sends loud alarm! Suitable for ceiling or wall mounting, including a test button to test the function and low battery signal.

### Features:

- » Detects smoke and sends an acoustic alarm signal
- » Ceiling or wall mounting
- » Suitable for any room (except the bathroom and kitchen)
- » Photoelectric chamber for early detection from all directions
- » Loud 85dB alarm signal
- » LED Signal for low battery
- » Big button for easy pressing
- » Mute function
- » Compact size Ø102mm x 36mm
- » Comply with EN14604:2005+AC:2008



### Specification:

Power	9V DC alkaline or lithium battery
Standby Current	≤12uA
Alarm Current	≤20mA
Alarm Volume	>85dB at 3 meters
Low Voltage Alarming	≤7.35V
LED Indicator	Red
Low Battery Indication	Low battery beep around every 43 sec.



SC0013



Made in China



RoHS  
compliant



\*The specifications and pictures are subject to change without prior notice.  
\*All trade names referenced are the registered trademarks of their respective owners.

# LogiLink®

## Smoke Alarm Detector

Art. No.: SC0013



Silence Mode	LED flashes every 10 sec.
Standby Status	LED flashes every 43 sec.
Operating Temperature	-10°C~40°C
Operating Humidity	1 ≤ 95%RH (no condensing)
Dimension	Ø102mm x 36mm
Weight	100g



### Package Contents:

- » 1 x Smoke Alarm Detector
- » 1 x 9V Battery
- » 1 x Fitting Material
- » 1 x User Manual

### Package Information:

- » Packing Dimension: 129 x 103 x 50mm
- » Packing Weight: 0.165kg
- » Carton Dimension: 290 x 225 x 225mm
- » Carton Q'ty: 20pcs
- » Carton Weight: 3.8kg



SC0013



Made in China



RoHS  
compliant



\*The specifications and pictures are subject to change without prior notice.  
\*All trade names referenced are the registered trademarks of their respective owners.