

### SPECIFICATIONS

**RATING:** 50mA, 12VDC  
**ELECTRICAL LIFE:** 100,000 cycles (ELTS)  
 1,000,000 cycles (EHTS)  
 Please inquire our office  
**CONTACT RESISTANCE:** 100mΩ max  
**INSULATION RESISTANCE:** 100MΩ min. 500VDC  
**DIELECTRIC STRENGTH:** 250VAC/1 min  
**OPERATION FORCE:** 100gf, 160gf, 260gf, 320gf, 520gf  
**STORAGE TEMPERATURE:** -30°C to +80°C  
**CONTACT ARRANGEMENT:** 1 pole 1 throw

### MATERIALS

**COVER** - Stainless steel or SPCC  
**BASE** - UL94V-0 Nylon Thermoplastic(Black)  
**STEM** - UL94V-0 Nylon Thermoplastic  
**CONTACT DISC** - Phosphor bronze or stainless steel with silver cladding  
**TERMINAL** - Brass with silver cladding  
**CAP** - Thermoplastic ABS

INDEX

TOGGLE

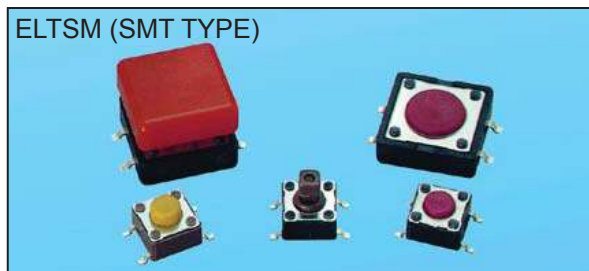
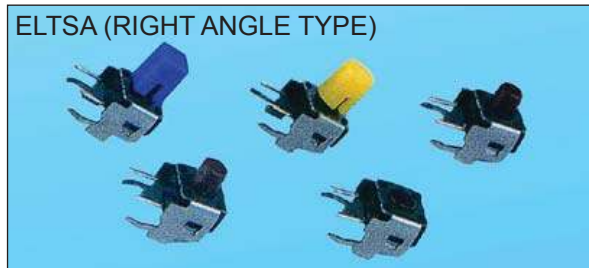
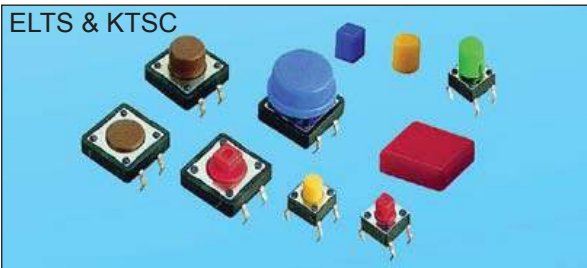
ROCKER

SLIDE

PUSH BUTTON

DIP

TACT



### HOW TO ORDER

ELTS [ ] [ ] - [ ] [ ] - [ ] [ ]

Package Style <Only For ELTSM>:  
 B= Tube  
 T/R=Tape & Reel

RoHS code  
 H= RoHS Compliant

Operation Force:  
 ▲ K= 100gf      N= 160gf  
 ▲ Y= 520gf      R= 260gf  
                          S= 320gf

Dimension H:

CODE	ELTSA-6	ELTS-6/ELTSM-6/ELTSG-6	ELTSG2	ELTS-2/ELTSM-2
▲(SQ.)x2.4mm	1 3.15 mm	4.3 mm	1 4.3 mm	4.3 mm
	2 3.85 mm	5.0 mm	4 7.3 mm	7.3 mm
	3 5.85 mm	7.0 mm	(SQ.) x3.8 mm	(SQ.) x3.8 mm
	44 6.15 mm	7.3 mm		
	5 8.35 mm	9.5 mm		
	6 11.85 mm	13.0 mm	5	8.5mm

\*If you need the other height option, please inquire our office

&lt;▲ 12x12, K, Y Unavailable&gt;

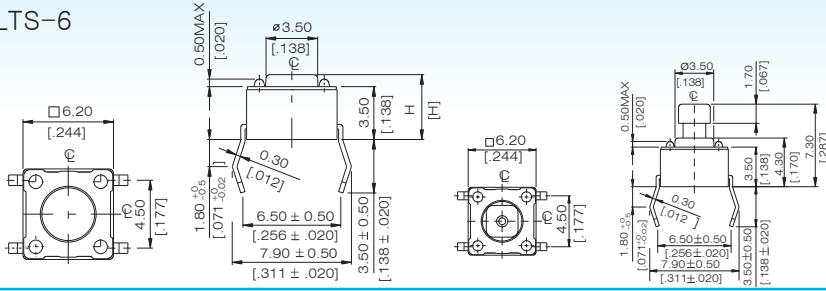
[ ] = None Post

Prod Size:  
 6= 6.2x6.2 mm  
 ▲2= 12x12 mm  
 <▲ 12x12 ELTSA Unavailable>

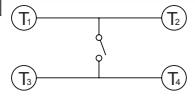
[ ] = Regular Type Tactile Switch  
 A= Right Angle Type Tactile Switch  
 G= With Ground Terminal Type Tactile Switch  
 M= SMT Type Tactile Switch

EL = 100,000 cycles  
 EH = 1,000,000 cycles (only 6.2x6.2mm, 100gf, 160gf, 260gf, available)

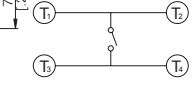
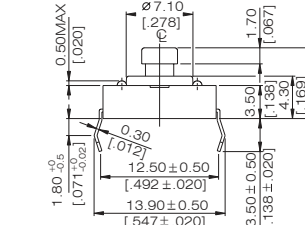
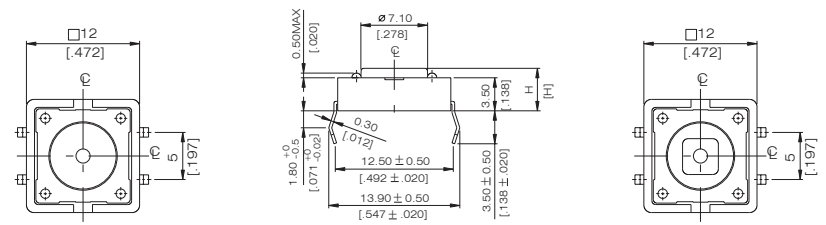
ELTS-6



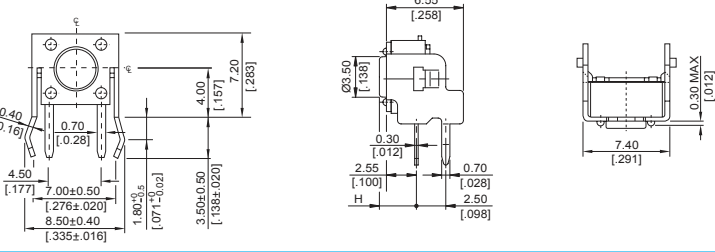
ELTS - 66	13.0[.512]
ELTS - 65	9.5[.374]
ELTS - 644	7.3(SQ)[.287]
ELTS - 63	7.0[.275]
ELTS - 62	5.0[.197]
ELTS - 61	4.3[.169]
PROD. NO.	H



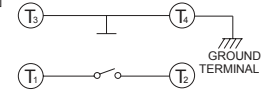
ELTS-2



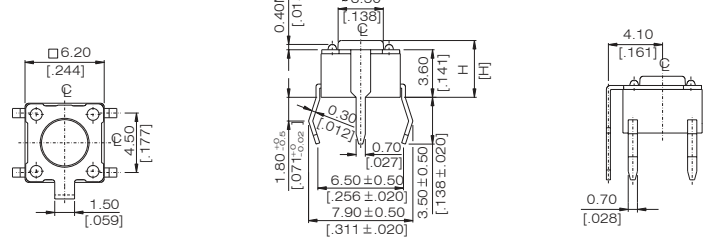
ELTSA-6



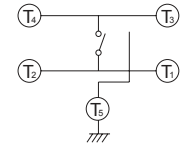
ELTSA - 66	11.85[.467]
ELTSA - 65	8.35[.329]
ELTSA - 644	6.15(SQ)[.242]
ELTSA - 63	5.85[.230]
ELTSA - 62	3.85[.152]
ELTSA - 61	3.15[.124]
PROD. NO.	H



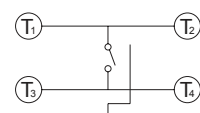
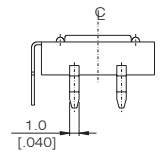
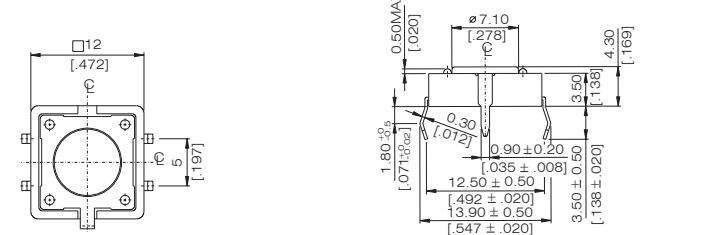
ELTSG-6



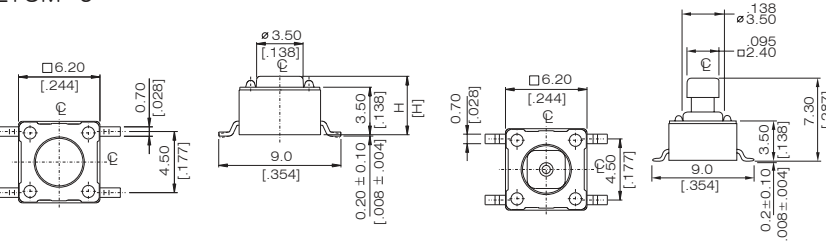
ELTSG - 66	13.0[.512]
ELTSG - 65	9.5[.374]
ELTSG - 644	7.3(SQ)[.287]
ELTSG - 63	7.0[.275]
ELTSG - 62	5.0[.197]
ELTSG - 61	4.3[.169]
PROD. NO.	H



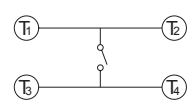
ELTSG-2



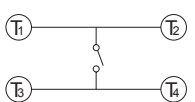
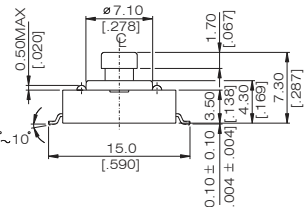
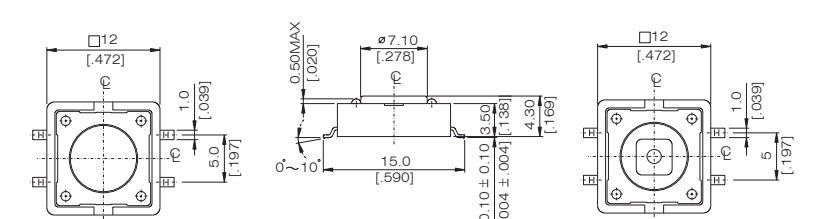
ELTSM-6



ELTSM - 66	13.0[.512]
ELTSM - 65	9.5[.374]
ELTSM - 644	7.3(SQ)[.287]
ELTSM - 63	7.0[.275]
ELTSM - 62	5.0[.197]
ELTSM - 61	4.3[.169]
PROD. NO.	H



ELTSM-2



INDEX

TOGGLE

ROCKER

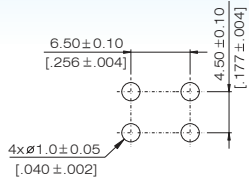
SLIDE

PUSH-BUTTON

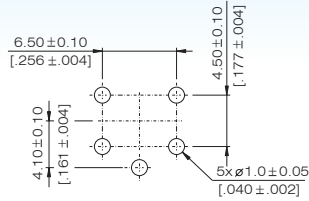
DIP

TACT

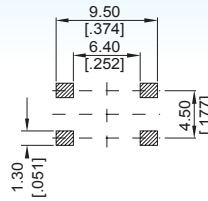
**P.C.B LAYOUT**  
ELTS-6



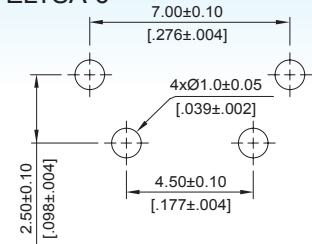
ELTSG-6



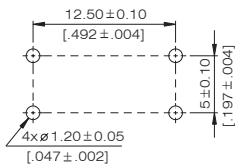
ELTSM-6



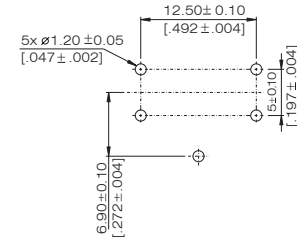
ELTSA-6



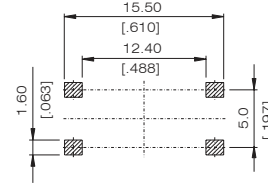
ELTS-2



ELTSG-2



ELTSM-2



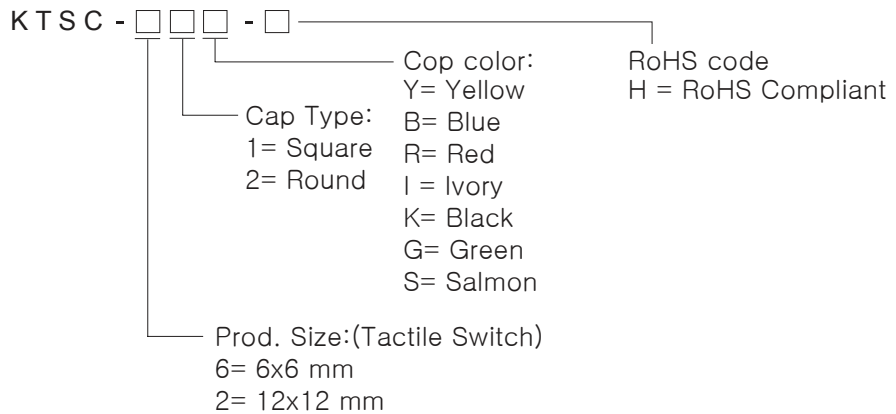
**SOLDERING PROCESSES**

△ WAVE SOLDERING: Recommended solder temperature at 500°F(260°C) max. 5 seconds subject to PCB 1.6mm thickness.

△ HAND SOLDERING: Use a soldering iron of 30 watts, controlled at 350°C, 5 seconds.

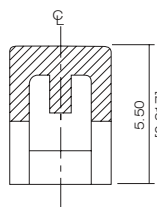
**Cap Option:**

**How to order the Cap:**

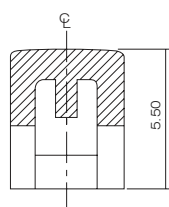


▲ Only For ELTS□ - 644 & 24,Cap In Bulk Pack

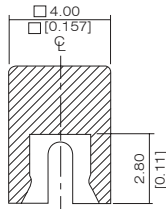
**KTSC-6**



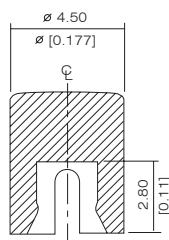
SEC B-B'



SEC B-B'



SEC A-A'



SEC A-A'

**KTSC-2**

