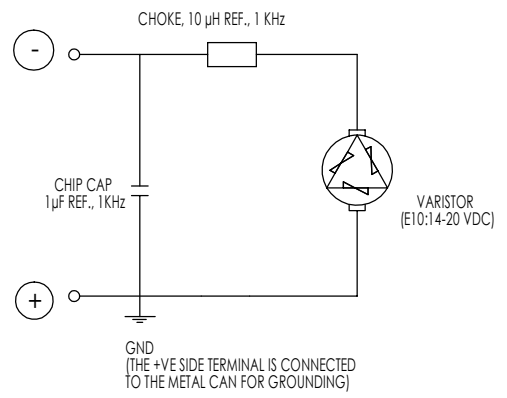
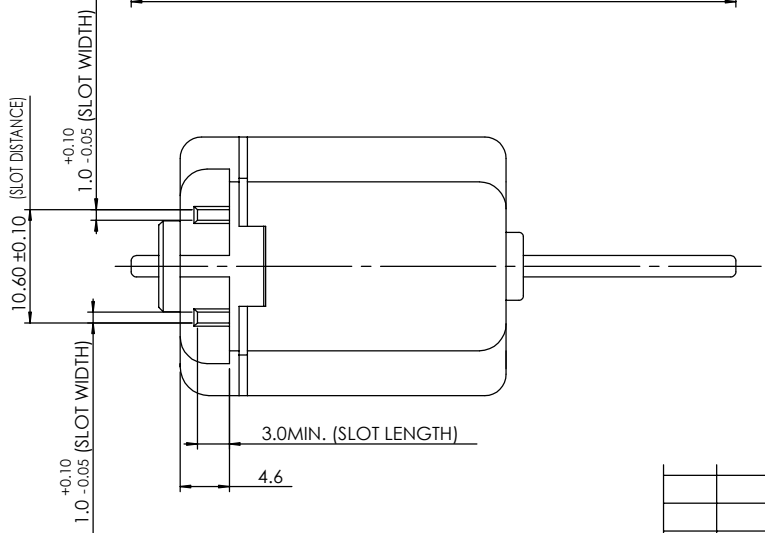


VIEW S



The assembler incorporating this motor into an apparatus has to ensure that his apparatus meets the appropriate load conditions or international standards, directives and regulations for EMC. Johnson Electric is prepared to assist the assembler in solving potential EMC problems. Johnson Electric is prepared to assist the assembler in this document is the property of Johnson Electric and the information therein contains confidential, unauthorised information or other use thereof, whether directly or indirectly, in whole or in part, is strictly prohibited. All products made or otherwise derived directly or indirectly from Johnson Electric are the property of Johnson Electric. Copyright Johnson Electric S.A. 2002. All rights reserved.

- NOTES :
- SHAFT LENGTH, DIM."A" = 55.0 .
FRONT EXTENSION, DIM."B" = 21.5 , MEASURED WITH SHAFT PUSHED AGAINST PLASTIC END CAP SIDE.
 - ROTATION - CLOCKWISE WHEN VIEWING FROM THE OUTPUT SHAFT END WITH POSITIVE VOLTAGE APPLIED TO POSITIVE TERMINAL.
 - PLUG-IN FORCE INTO EACH SLOT TO BE 5 - 30 NEWTON, MEASURED BY A STEEL FLAT GAUGE OF DIMENSIONS : 3.0 +0/-0.05 WIDTH X 0.80 ± 0.005 THICK X 4.0 ± 0.5 LONG AND SURFACE FINISH Rz 1-3 MIRCONS.
 - END PLAY 0.30 MAX.

ALL DIMENSIONS ARE IN MILLIMETRES

DO NOT SCALE DRAWING

F	CUSTOMER PART NO. CHANGED.	LYL	2003/10/20
E	ADD CUSTOMER PART NO. ON INKJET PRINTING.	LYL	2003/08/06
ALT.	REF.	DESCRIPTION	BY DATE
MATERIAL		FINISH	TOLERANCES
			1 DEC. PLACE ± 0.15 2 DEC. PLACES ± 3 DEC. PLACES ± ANGULAR ± 2°
TITLE		SCALE	2:1
(NF243G)		DWN. BY	JACKY
MOTOR OUTLINE		CHK. BY	
		APP. BY	
JOHNSON ELECTRIC ENGINEERING LTD. A JOHNSON ELECTRIC GROUP COMPANY. JOHNSON BUILDING, TAI PO, HONGKONG.		DWG. NO. 20242-99900	

A3

