

BOLD

Safety Instructions

1, 2, 3, 4, 6, 8, 9, 10, 12, 13, 14, 15, 16, 17



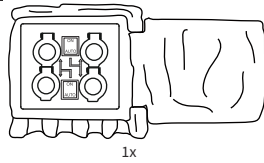
Info

www.Die-Bold.com

Die BOLD GmbH
Auf dem Liethberge 26
38690 Goslar-Germany

www.Die-Bold.com

Art.-Nr.: 10340
230V-50Hz, IP44
max. total wattage: 3680W
(switch position is "ON")
max. total wattage: 1100W
(switch position is "AUTO")
(+MA 230) BVD 06/20



1x



1x



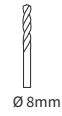
2x



2x



2x

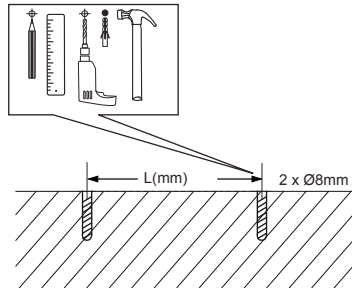
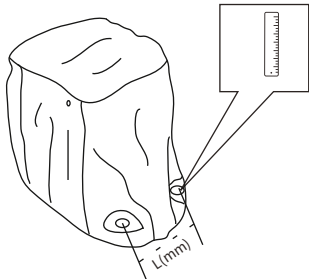


Ø 8mm



Not included

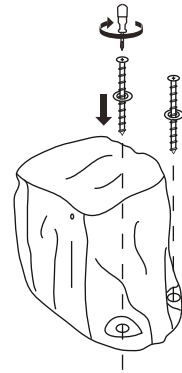
A1



Safety Instructions
Nr. 3

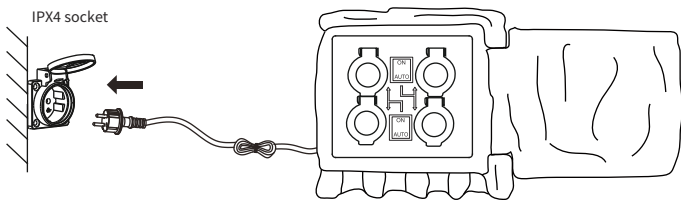


B1

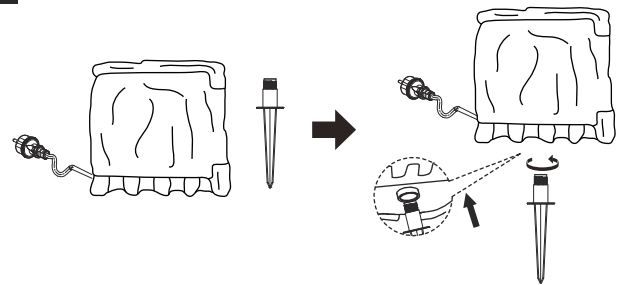


Only suitable for application Vertically.

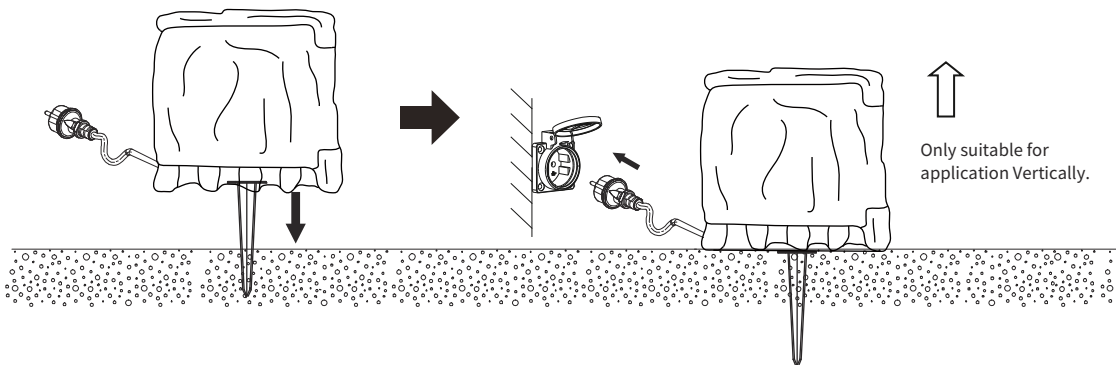
C1



A2

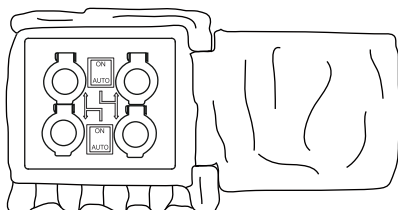


B2



Only suitable for application Vertically.

Switch position: "AUTO"



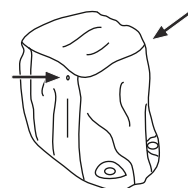
An

>60Lux



Aus

<30Lux



Beachtung! Die beiden Löcher oben an der Gartensteckdose sind Sicherheitsentwässerungslöcher. Sie sind notwendig und nicht beschädigt. Bitte blockieren Sie sie nicht während des Gebrauchs. Attention! The two holes on the top of the garden socket are safety drainage holes. They are necessary and are not damaged, please do not block them during using.